

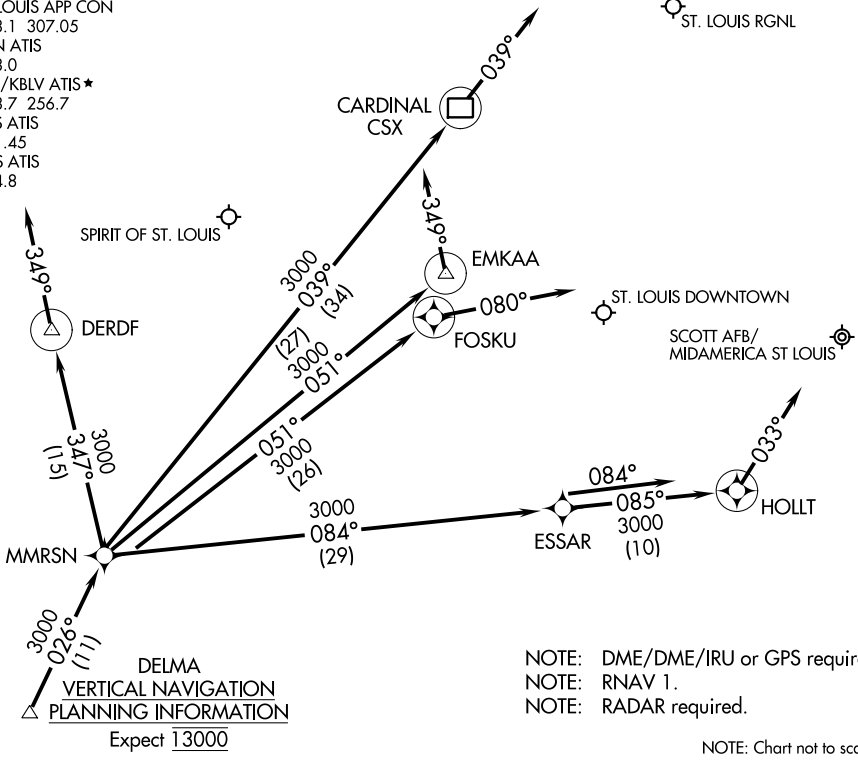
DELMA FOUR ARRIVAL (RNAV)

AL-46 (FAA)

BELLEVILLE, ILLINOIS

ST LOUIS APP CON
 128.1 307.05
 ALN ATIS
 128.0
 BLV/KBLV ATIS *
 128.7 256.7
 CPS ATIS
 121.45
 SUS ATIS
 134.8

ST. LOUIS RGNL



DELMA
 VERTICAL NAVIGATION
 PLANNING INFORMATION
 Expect 13000

NOTE: DME/DME/IRU or GPS required.
 NOTE: RNAV 1.
 NOTE: RADAR required.

NOTE: Chart not to scale.

ARRIVAL ROUTE DESCRIPTION

SPIRIT OF ST. LOUIS:
 LANDING RUNWAYS 8L/R: From DELMA on track 026° to MMRSN, then on track 347° to DERDF. Expect RADAR vectors to final approach. If no heading received, track 349°.
 LANDING RUNWAYS 26L/R: From DELMA on track 026° to MMRSN, then on track 051° to EMKAA. Expect RADAR vectors to final approach. If no heading received, track 349°.

ST. LOUIS DOWNTOWN:
 LANDING RUNWAY 12R: From DELMA on track 026° to MMRSN, then on track 051° to FOSKU. Expect RADAR vectors to final approach. If no heading received, track 080°.
 LANDING RUNWAYS 30L/R: From DELMA on track 026° to MMRSN, then on track 084° to ESSAR, then on track 085° to HOLLT. Expect RADAR vectors to final approach. If no heading received, track 033°.

SCOTT AFB/MIDAMERICA ST LOUIS:
 LANDING RUNWAYS 14L/R, 32L/R: From DELMA on track 026° to MMRSN, then on track 084° to ESSAR. Expect RADAR vectors to final approach. If no heading received, track 084°.

ST. LOUIS RGNL:
 LANDING RUNWAYS 11, 17, 29, 35: From DELMA on track 026° to MMRSN, then on track 039° to CSX DME. Expect RADAR vectors to final approach course. If no heading received, track 039°.

DELMA FOUR ARRIVAL (RNAV)

BELLEVILLE, ILLINOIS

EC-3, 19 MAY 2022 to 16 JUN 2022

EC-3, 19 MAY 2022 to 16 JUN 2022