

WAAS CH 56419 W35A	APP CRS 353°	Rwy Idg TDZE Apt Elev	6099 1238 1258
--	------------------------	-----------------------------	---

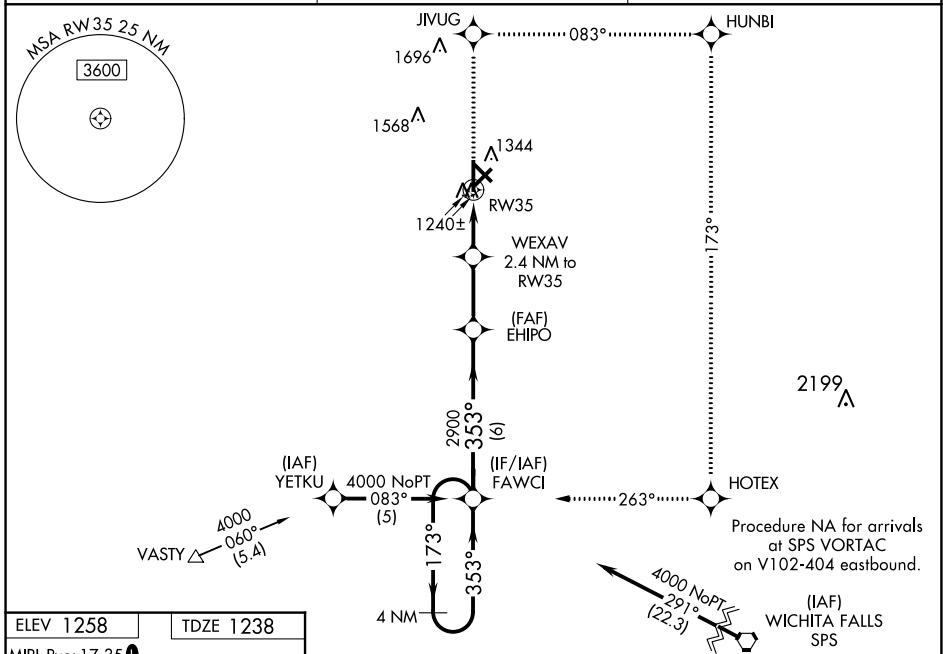
RNAV (GPS) RWY 35

FREDERICK RGNL (F'DR)

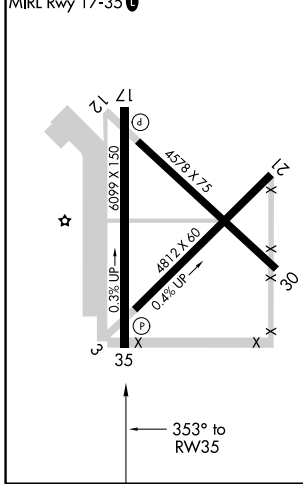
⚠ For uncompensated Baro-VNAV systems, LNAV/VNAV NA below -17°C (2°F) or above 46°C (114°F). DME/DME RNP-0.3 NA. Baro-VNAV and VDP NA when using Vernon altimeter setting. When local altimeter setting not received, use Vernon altimeter setting and increase all DA/MDA 40 feet, increase LNAV Cat C visibility ¼ mile. Night landing: Rwy 3, 12, 17, 21, 30, NA.

MISSED APPROACH: Climb to 4000 direct JIVUG and right turn on track 083° to HUNBI and right turn on track 173° to HOTEX and right turn on track 263° to FAWCI and hold.

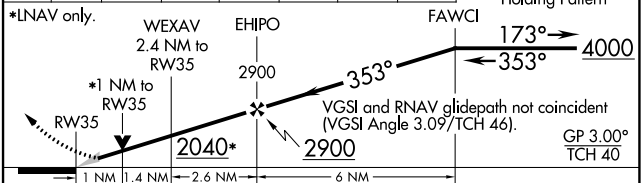
ASOS 132.675	ALTUS APP CON * 125.1 353.7	UNICOM 123.05 (CTAF) 0
------------------------	---------------------------------------	----------------------------------



ELEV 1258	TDZE 1238
-----------	-----------



4000	JIVUG	HUNBI	HOTEX	FAWCI
↑	↻ tr 083°	↻ tr 173°	↻ tr 263°	↻



CATEGORY	A	B	C	D
LPV DA	1438-¾ 200 (200-¾)			
LNAV/VNAV DA	1500-1 262 (300-1)			
LNAV MDA	1600-1 362 (400-1)			1600-1¼ 362 (400-1¼)
CIRCLING	1700-1 442 (500-1)	1720-1 462 (500-1)	1780-1½ 522 (600-1½)	1880-2 622 (700-2)

SC-1, 19 MAY 2022 to 16 JUN 2022

SC-1, 19 MAY 2022 to 16 JUN 2022