

LOC/DME I-AHI <b>109.1</b> Chan 28	APP CRS <b>352°</b>	Rwy Idg TDZE <b>6118</b> Apt Elev <b>6187</b>
--	------------------------	---

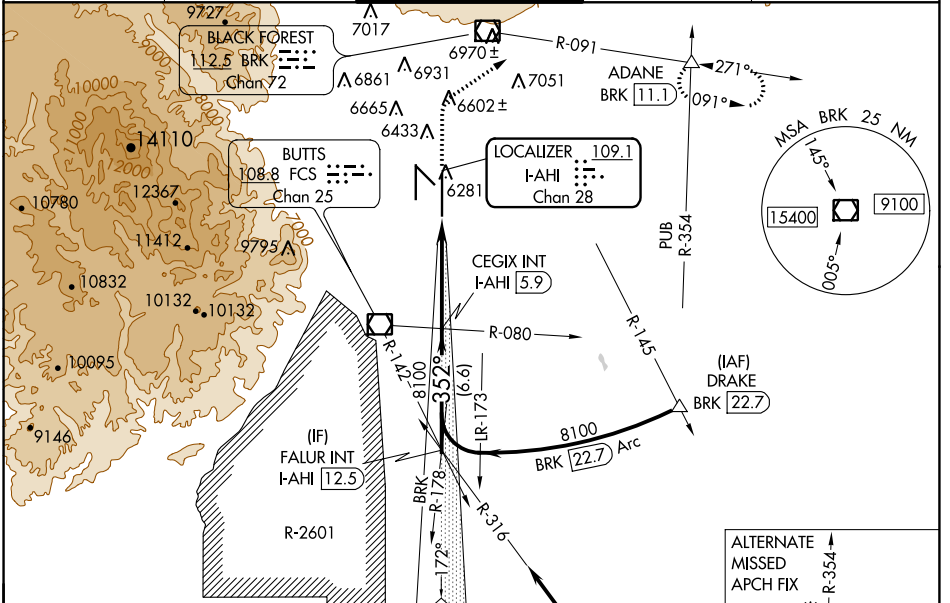
# ILS or LOC RWY 35R

CITY OF COLORADO SPRINGS MUNI (COS)

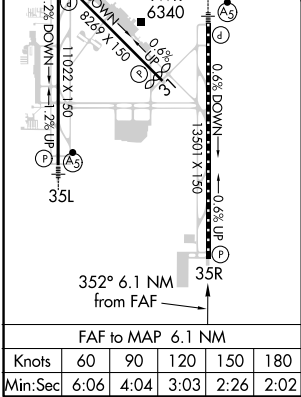
**⚠** RADAR required when R-2601 in use.

**⚠** MISSED APPROACH: Climb to 6700 then climbing right turn to 9000 on heading 047° and on BRK VOR/DME R-091 to ADANE INT/BRK 11.1 DME and hold.

ATIS <b>125.0 254.3</b>	SPRINGS APP CON <b>124.0 257.875</b>	SPRINGS TOWER <b>119.9 360.6</b>	GND CON <b>121.7 348.6</b>	CLNC DEL <b>134.45 363.125</b>
----------------------------	---	-------------------------------------	-------------------------------	-----------------------------------



ELEV 6187	<b>D</b> TDZE 6118
MIRL Rwy 13-31	
HIRL Rws 17R-35L and 17L-35R	
REIL Rws 13, 17R, 31 and 35R	
TDZ/CL Rws 17L and 35R	



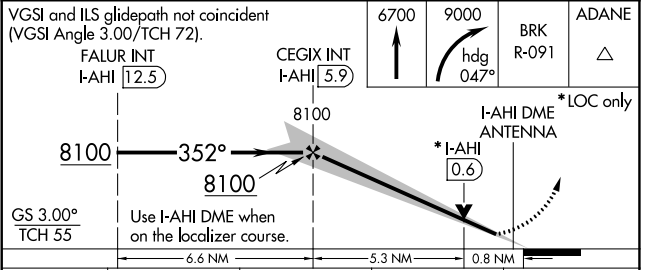
Procedure NA for arrival on PUB VORTAC airway radials 267 CW 354.

IAF PUEBLO 116.7 PUB Chan 114

ALTERNATE MISSED APCH FIX

R-245 354° R-354 R-174° R-354 112.1 HGO Chan 58

DRAKE PUB 118.7



CATEGORY	A	B	C	D
S-ILS 35R	6318/40 200 (200-¾)			
S-LOC 35R	6420/55	302 (300-1)	6420/45	302 (300-¾)
<b>C</b> CIRCLING	6740-1 553 (600-1)	6800-1 613 (700-1)	7040-2½ 853 (900-2½)	7260-3 1073 (1100-3)

SW-1, 19 MAY 2022 to 16 JUN 2022

SW-1, 19 MAY 2022 to 16 JUN 2022