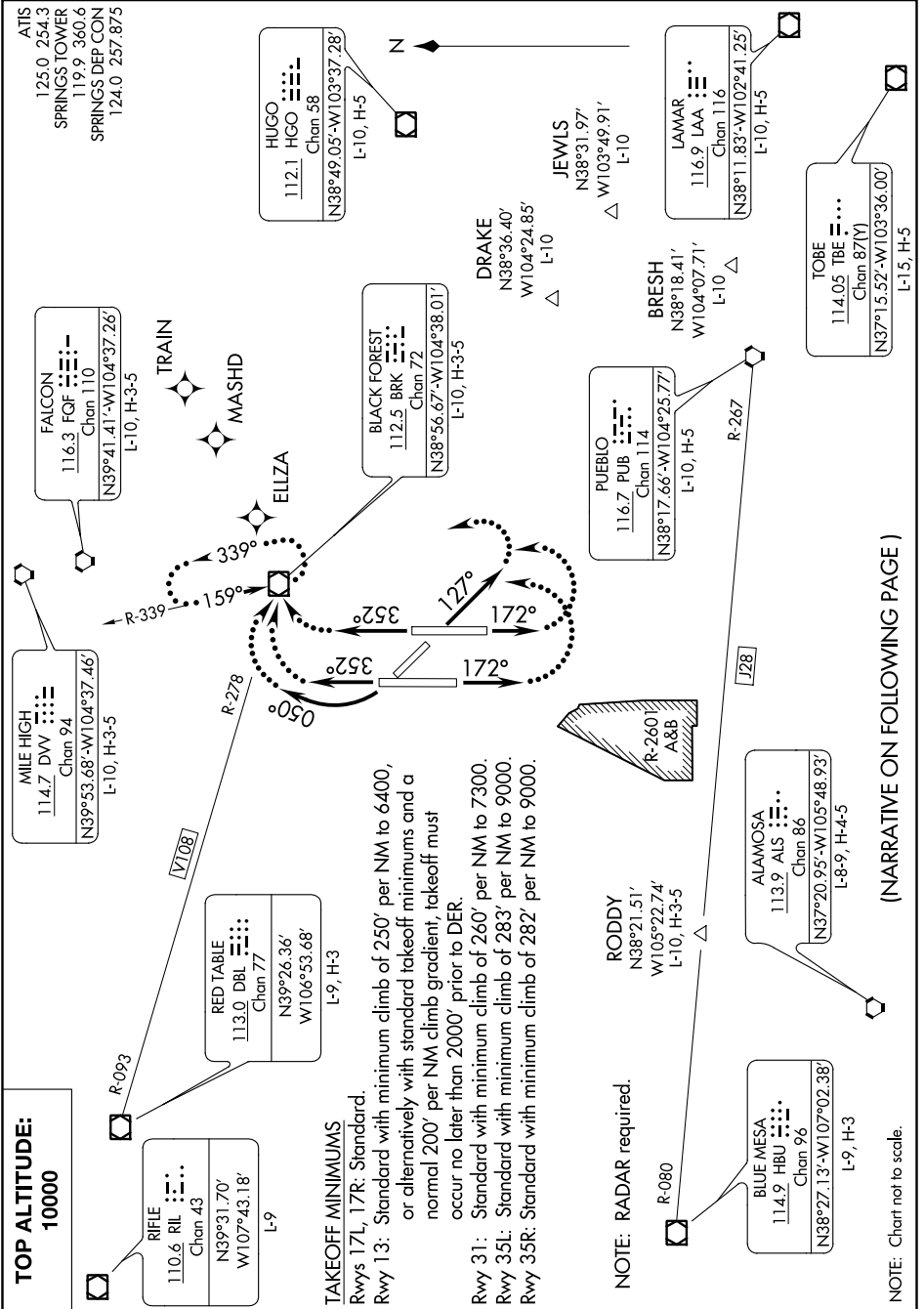


SPRINGS SIX DEPARTURE

AL-87 (FAA)

CITY OF COLORADO SPRINGS MUNI (COS)
COLORADO SPRINGS, COLORADO

SW-1, 19 MAY 2022 to 16 JUN 2022



SPRINGS SIX DEPARTURE

COLORADO SPRINGS, COLORADO
CITY OF COLORADO SPRINGS MUNI (COS)

SW-1, 19 MAY 2022 to 16 JUN 2022

NOTE: Chart not to scale.

(NARRATIVE ON FOLLOWING PAGE)

TAKEOFF MINIMUMS

Rwys 17L, 17R: Standard.

Rwy 13: Standard with minimum climb of 250' per NM to 6400, or alternatively with standard takeoff minimums and a normal 200' per NM climb gradient, takeoff must occur no later than 2000' prior to DER.

Rwy 31: Standard with minimum climb of 260' per NM to 7300.

Rwy 35L: Standard with minimum climb of 283' per NM to 9000.

Rwy 35R: Standard with minimum climb of 282' per NM to 9000.

NOTE: RADAR required.