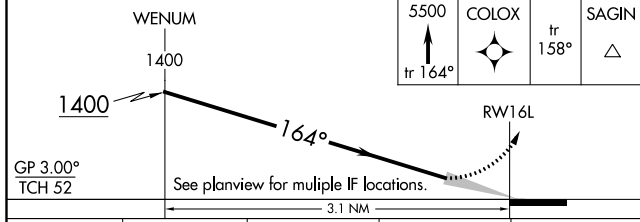
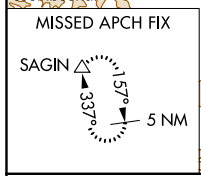
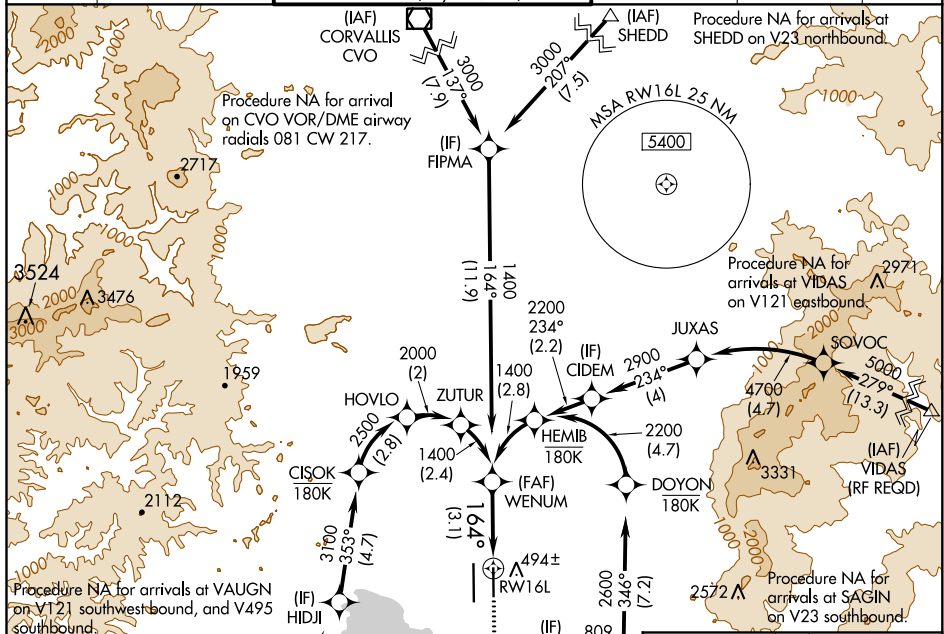


APP CRS	Rwy Idg	<b>6000</b>
<b>164°</b>	TDZE	<b>369</b>
	Apt Elev	<b>374</b>

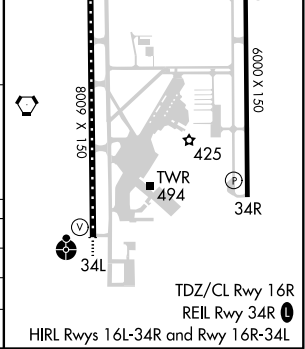
# RNAV (RNP) Z RWY 16L

MAHLON SWEET FLD (EUG)

RNP AR APCH.		MALSR	MISSED APPROACH: Climb to 5500 on track 164° to COLOX and on track 158° to SAGIN and hold, continue climb-in-hold to 5500.		
▼ For uncompensated Baro-VNAV systems, procedure NA below -9°C or above 54°C. Simultaneous approach authorized. For inop ALS, increase RNP 0.30 all Cats visibility to 1 SM.					
ATIS	CASCADE APP CON	EUGENE TOWER	GND CON	CLNC DEL	UNICOM
<b>125.225</b>	<b>119.6 348.7</b>	<b>118.9 (CTAF) 0 371.9 (Rwy 16R/34L)</b> <b>124.15 371.9 (Rwy 16L/34R)</b>	<b>121.7 269.5</b>	<b>121.7 269.5</b>	<b>122.95</b>



ELEV 374	TDZE 369
----------	----------



CATEGORY	A	B	C	D
RNP 0.10 DA		699-1/2	330 (400-1/2)	
RNP 0.30 DA		749-5/8	380 (400-5/8)	

## AUTHORIZATION REQUIRED

NW-1, 19 MAY 2022 to 16 JUN 2022

NW-1, 19 MAY 2022 to 16 JUN 2022