

# RNAV (RNP) Z RWY 16R

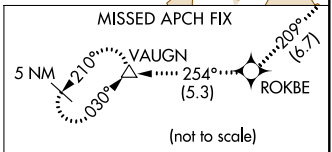
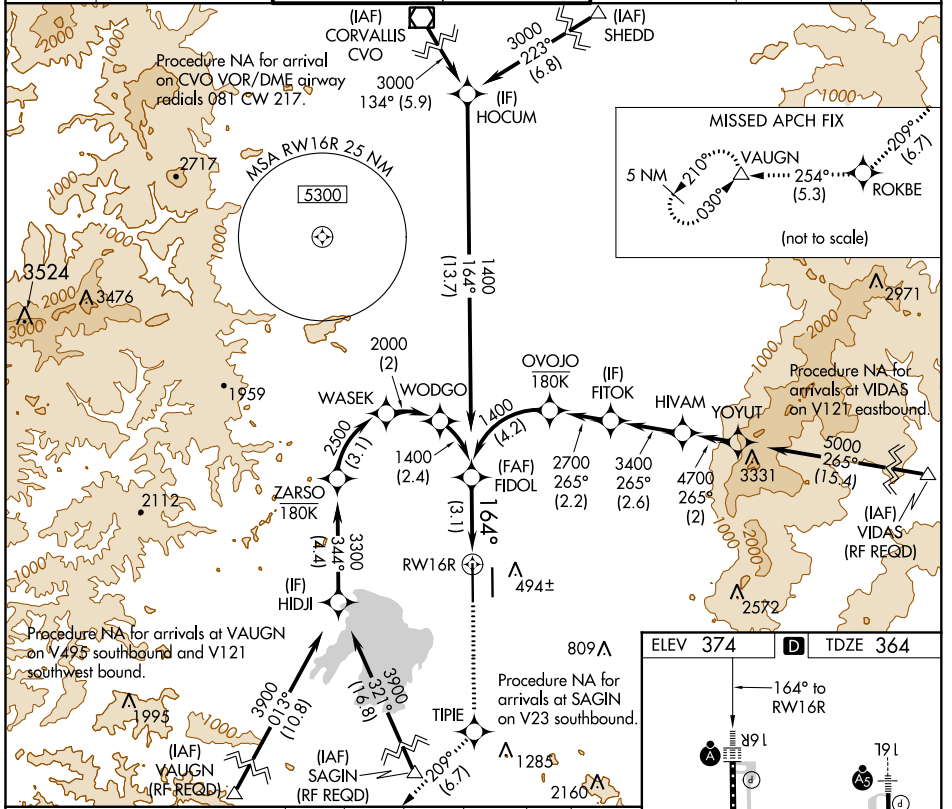
MAHLON SWEET FLD (EUG)

APP CRS	Rwy Idg	<b>8099</b>
<b>164°</b>	TDZE	<b>364</b>
	Apt Elev	<b>374</b>

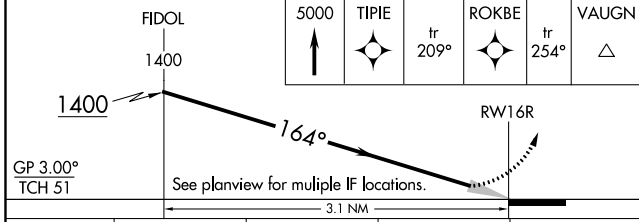
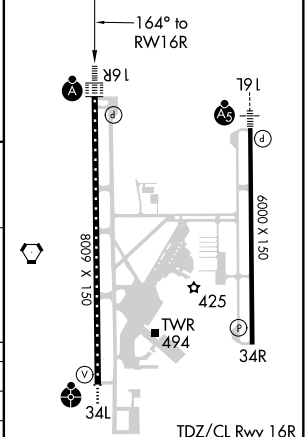
RNP AR APCH.		EUGENE TOWER *	
▼ For uncompensated Baro-VNAV systems, procedure NA below -9°C or above 54°C. Simultaneous approach authorized. For inop ALS, increase RNP 0.17 all Cats visibility to RVR 4000 and RNP 0.30 all Cats visibility to RVR 5500.		<b>118.9</b> (CTAF) <b>0 371.9</b> (Rwy 16R/34L) <b>124.15 371.9</b> (Rwy 16L/34R)	
ATIS	CASCADE APP CON *	GND CON	
<b>125.225</b>	<b>119.6 348.7</b>	<b>121.7 269.5</b>	
		CLNC DEL	UNICOM
		<b>121.7 269.5</b>	<b>122.95</b>

ALSF-2

MISSED APPROACH: Climb to 5000 direct TIPIE, and on track 209° to ROKBE, and track 254° to VAUGN and hold, continue climb-in-hold to 5000.



ELEV 374	<b>D</b>	TDZE 364
----------	----------	----------



CATEGORY	A	B	C	D
RNP 0.17 DA		614/24	250 (300-½)	
RNP 0.30 DA		711/30	347 (400-¾)	

## AUTHORIZATION REQUIRED

NW-1, 19 MAY 2022 to 16 JUN 2022

NW-1, 19 MAY 2022 to 16 JUN 2022