

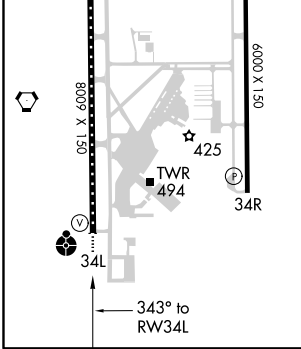
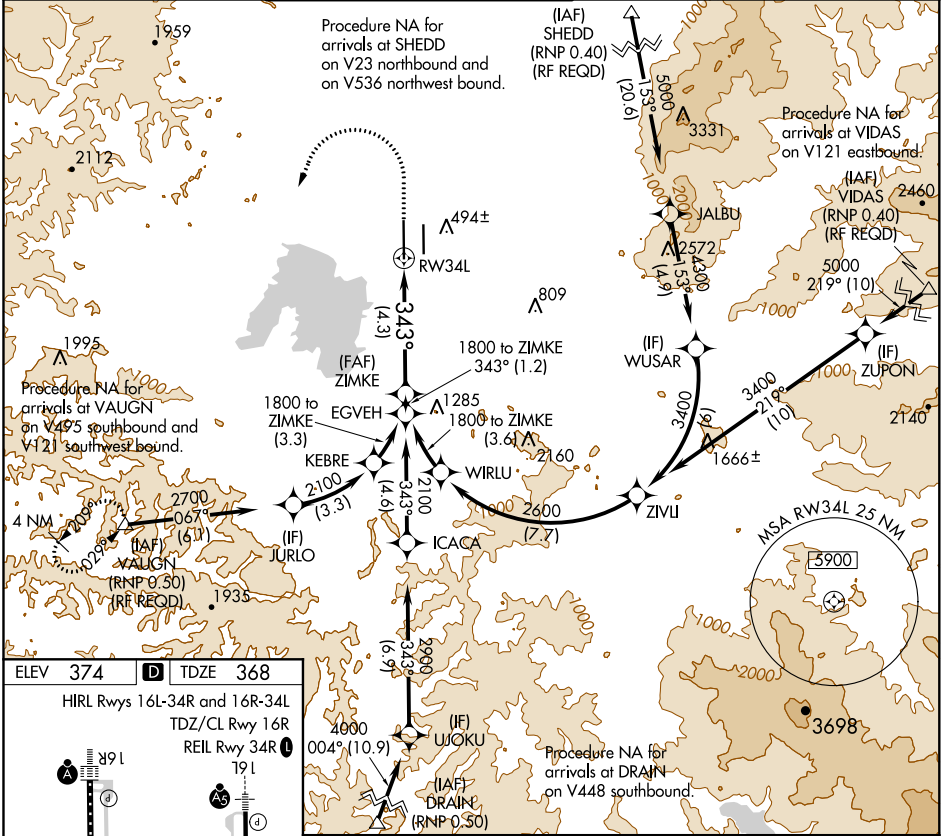
APP CRS	Rwy Idg	8009
343°	TDZE	368
	Apt Elev	374

RNAV (RNP) Z RWY 34L
MAHLON SWEET FLD (EUG)

▼ For uncompensated Baro-VNAV systems, procedure NA below -9°C (16°F) or above 54°C (130°F). Simultaneous approach authorized. GPS required.

ODALS ... MISSED APPROACH: Climb to 1500, then climbing left turn to 4000 direct VAUGHN and hold.

ATIS	CASCADE APP CON*	EUGENE TOWER* 118.9 (CTAF) 0 371.9 (Rwy 16R/34L) 124.15 371.9 (Rwy 16L/34R)	GND CON	CLNC DEL	UNICOM
125.225	119.6 348.7		121.7 269.5	121.7 269.5	122.95



1500	4000	VAUGHN	See planview for multiple IF locations.	ZIMKE
↑	↶	△		1800
				1800
				GP 3.00° TCH 53
CATEGORY	A	B	C	D
RNP 0.30 DA	759/50 391 (400-1)			
AUTHORIZATION REQUIRED				

NW-1, 19 MAY 2022 to 16 JUN 2022

NW-1, 19 MAY 2022 to 16 JUN 2022