

WAAS CH 81900 W34B	APP CRS 344°	Rwy ldg TDZE Apt Elev	6000 374 374
--	------------------------	-----------------------------	---

RNAV (GPS) Y RWY 34R

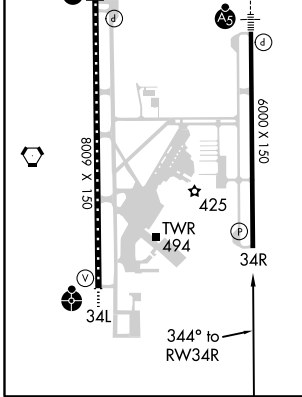
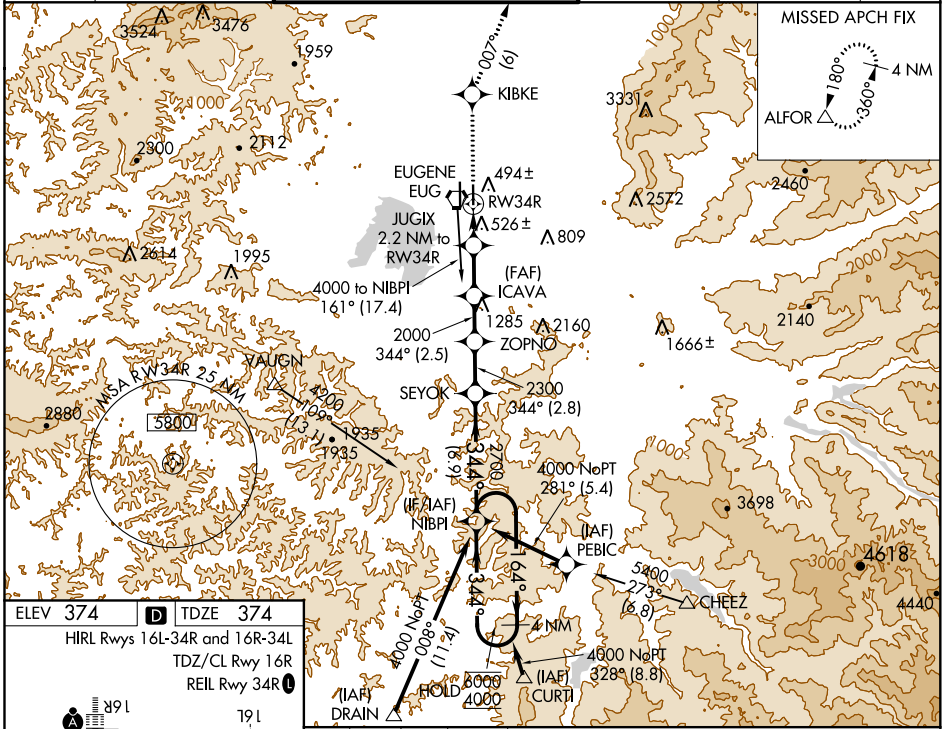
MAHLON SWEET FLD (EUG)

RNP APCH.

Simultaneous approach authorized. LNAV procedure NA during simultaneous operations.
 Use of FD or AP providing RNAV track guidance required during simultaneous operations.
 Rwy 34R helicopter visibility reduction below 3/4 SM NA. For uncompensated Baro-VNAV systems, LNAV/VNAV NA below -10°C or above 54°C.

MISSED APPROACH: Climb to 3000 direct KIBKE then on track 007° to ALFOR and hold.

ATIS 125.225	CASCADE APP CON ★ 119.6 348.7	EUGENE TOWER★ 118.9 (CTAF) 371.9 (Rwy 16R/34L) 124.15 371.9 (Rwy 16L/34R)	GND CON 121.7 269.5	CLNC DEL 121.7 269.5	UNICOM 122.95
------------------------	---	---	-------------------------------	--------------------------------	-------------------------



ELEV 374	TDZE 374	HIRL Rws 16L-34R and 16R-34L		TDZ/CL Rwy 16R	REIL Rwy 34R																																																												
<table border="1"> <tr> <td>3000</td> <td>KIBKE</td> <td>tr</td> <td>ALFOR</td> <td>NIBPI</td> <td>4 NM</td> </tr> <tr> <td colspan="6">Holding Pattern</td> </tr> <tr> <td colspan="3">*LNAV only</td> <td>JUGIX</td> <td>ICAVA</td> <td>ZOPNO</td> </tr> <tr> <td colspan="3"></td> <td>2.2 NM to RW34R</td> <td>2000</td> <td>SEYOK</td> </tr> <tr> <td colspan="3"></td> <td>*1.1 NM to RW34R</td> <td>2300</td> <td>164° → 6000</td> </tr> <tr> <td colspan="3"></td> <td>RW34R</td> <td>2700</td> <td>← 344° 4000</td> </tr> <tr> <td colspan="3"></td> <td>1120*</td> <td>2000</td> <td>GP 3.00°</td> </tr> <tr> <td colspan="3"></td> <td>1.1 NM</td> <td>1.1 NM</td> <td>2.8 NM</td> </tr> <tr> <td colspan="3"></td> <td>2.5 NM</td> <td>2.8 NM</td> <td>6.9 NM</td> </tr> <tr> <td colspan="3"></td> <td>2.8 NM</td> <td>6.9 NM</td> <td>TCH 50</td> </tr> </table>						3000	KIBKE	tr	ALFOR	NIBPI	4 NM	Holding Pattern						*LNAV only			JUGIX	ICAVA	ZOPNO				2.2 NM to RW34R	2000	SEYOK				*1.1 NM to RW34R	2300	164° → 6000				RW34R	2700	← 344° 4000				1120*	2000	GP 3.00°				1.1 NM	1.1 NM	2.8 NM				2.5 NM	2.8 NM	6.9 NM				2.8 NM	6.9 NM	TCH 50
3000	KIBKE	tr	ALFOR	NIBPI	4 NM																																																												
Holding Pattern																																																																	
*LNAV only			JUGIX	ICAVA	ZOPNO																																																												
			2.2 NM to RW34R	2000	SEYOK																																																												
			*1.1 NM to RW34R	2300	164° → 6000																																																												
			RW34R	2700	← 344° 4000																																																												
			1120*	2000	GP 3.00°																																																												
			1.1 NM	1.1 NM	2.8 NM																																																												
			2.5 NM	2.8 NM	6.9 NM																																																												
			2.8 NM	6.9 NM	TCH 50																																																												
CATEGORY	A		B		C																																																												
LPV DA			636-7/8		262 (300-7/8)																																																												
LNAV/VNAV DA			661-7/8		287 (300-7/8)																																																												
LNAV MDA	780-1		406 (500-1)		780-1 1/8 406 (500-1 1/8)																																																												
CIRCLING	820-1 446 (500-1)		840-1 466 (500-1)		1000-1 3/4 626 (700-1 3/4) 1140-2 1/2 766 (800-2 1/2)																																																												

NW-1, 19 MAY 2022 to 16 JUN 2022

NW-1, 19 MAY 2022 to 16 JUN 2022