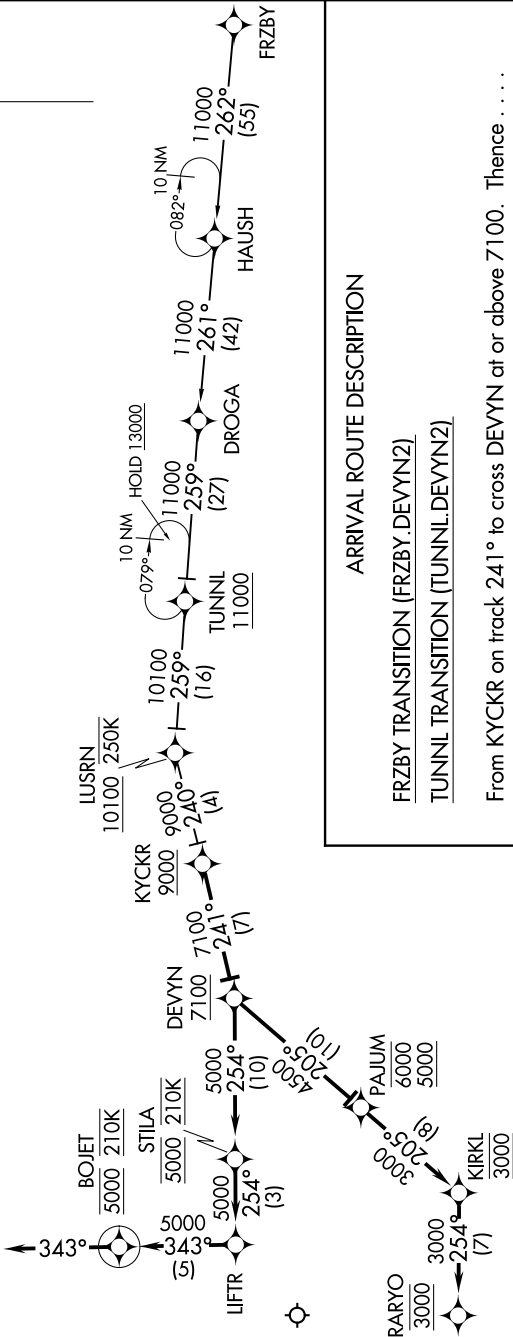


NW-1, 19 MAY 2022 to 16 JUN 2022

SEATTLE APP CON
128.5 306.9
ATIS
128.65

NOTE: RADAR required.
NOTE: RNAV 1.
NOTE: DME/DME/IRU or GPS required.
NOTE: FRZBY TRANSITION: For non-GPS equipped aircraft, MWH, GEG and OLM DMEs must be operational.
NOTE: TUNNL TRANSITION ATC assigned only.



ARRIVAL ROUTE DESCRIPTION

FRZBY TRANSITION (FRZBY.DEVYN2)
TUNNL TRANSITION (TUNNL.DEVYN2)

From KYCKR on track 241° to cross DEVYN at or above 7100. Thence
LANDING RUNWAY 16R: From DEVYN on track 254° to cross STILA at 5000 and at 210K, then on track 254° to LIFTR, then on track 343° to cross BOJET at 5000 and at 210K, then on heading 343° or as assigned by ATC. Expect RADAR vectors to final approach course.
LANDING RUNWAY 34L: From DEVYN on track 205° to cross PAJUM between 5000 and 6000, then on track 205° to cross KIRKL at 3000, then on track 254° to cross RARYO at 3000. Expect RNAV (GPS) RWY 34L approach.

NOTE: Chart not to scale.

NW-1, 19 MAY 2022 to 16 JUN 2022