

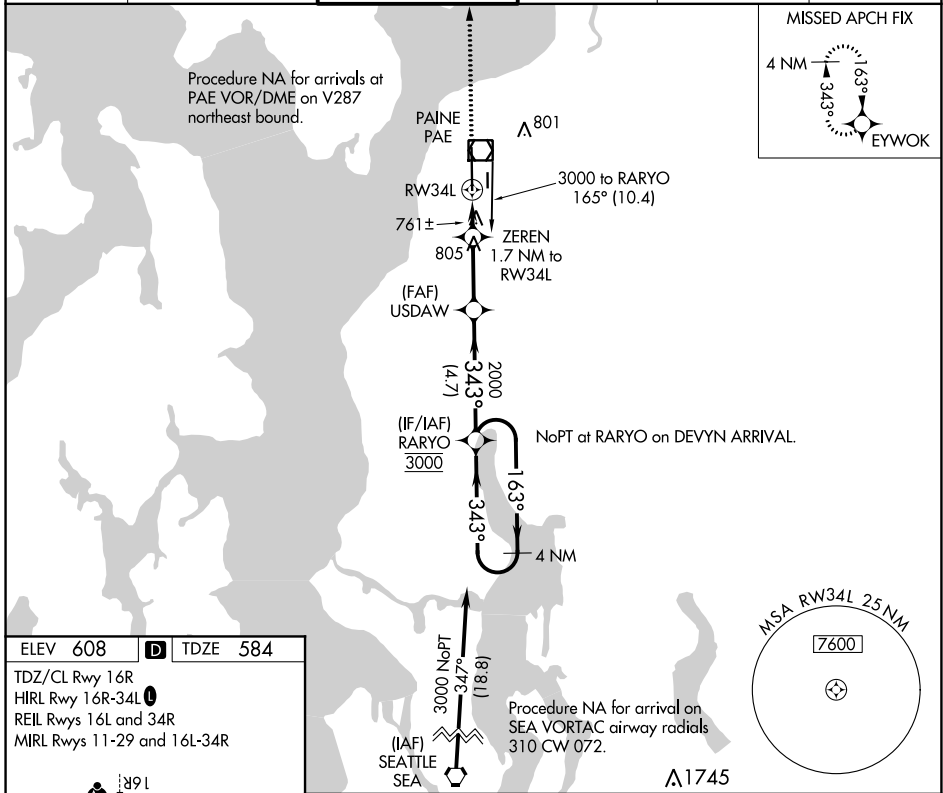
APP CRS	Rwy Idg	<b>9010</b>
<b>343°</b>	TDZE	<b>584</b>
	Apt Elev	<b>608</b>

# RNAV (GPS) RWY 34L

SNOHOMISH COUNTY (PAINE FLD) (P.A.E.)

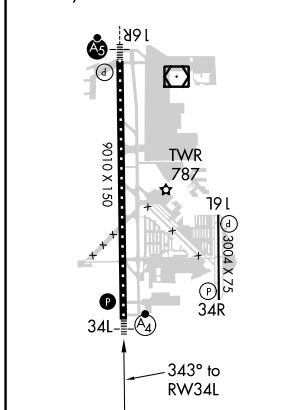
Circling Rwy 34R NA at night. Rwy 34L helicopter visibility reduction below 3/4 SM NA. DME/DME RNP-0.3 NA.	MALS F	MISSED APPROACH: Climb to 3000 direct EYWOK and hold.

ATIS <b>128.65</b>	SEATTLE APP CON <b>128.5 306.9</b>	PAINE TOWER ★ <b>132.95 (CTAF) 0 256.7</b>	GND CON <b>121.8 339.8</b>	CLNC DEL <b>127.175</b>	UNICOM <b>122.95</b>
-----------------------	---------------------------------------	---	-------------------------------	----------------------------	-------------------------

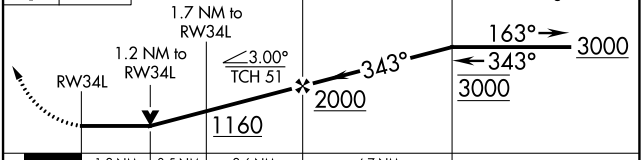


ELEV 608	<b>D</b>	TDZE 584
----------	----------	----------

TDZ/CL Rwy 16R  
HIRL Rwy 16R-34L  
REIL Rwys 16L and 34R  
MIRL Rwys 11-29 and 16L-34R



3000	EYWOK	VGSI and descent angles not coincident (VGSI Angle 3.00/TCH 75).
------	-------	--



CATEGORY	A	B	C	D
LNAV MDA	1020-3/4 436 (500-3/4)		1020-1 436 (500-1)	
<b>C</b> CIRCLING	1100-1 492 (500-1)		1120-1 1/2 512 (600-1 1/2)	1160-2 552 (600-2)

NW-1, 19 MAY 2022 to 16 JUN 2022

NW-1, 19 MAY 2022 to 16 JUN 2022