

WAAS CH 60911 W16B	APP CRS 163°	Rwy Idg TDZE Apt Elev	9010 570 608
--	------------------------	-----------------------------	---

RNAV (GPS) Y RWY 16R

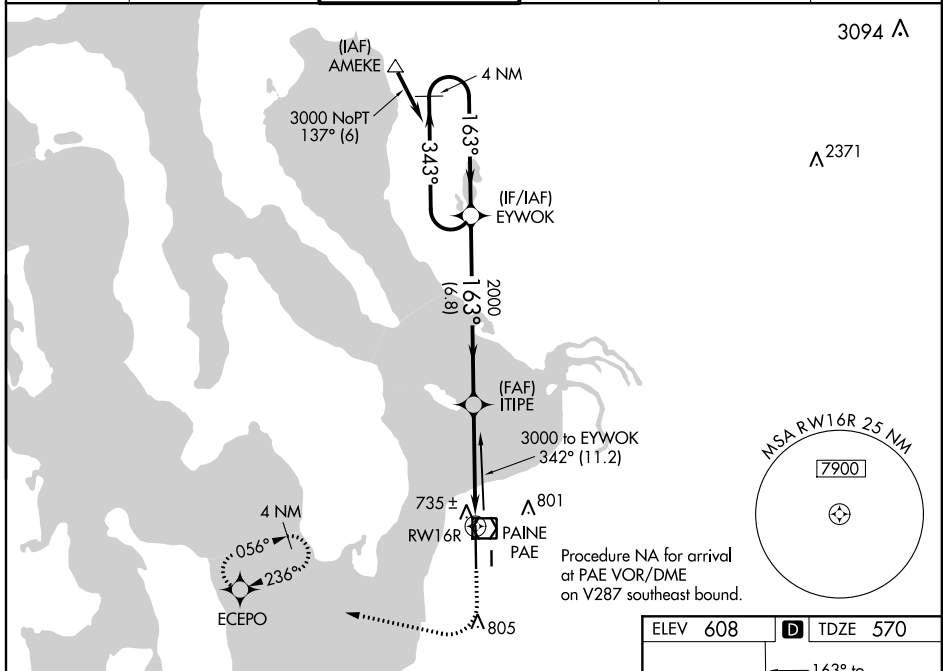
SNOHOMISH COUNTY (PAINE FLD) (P.A.E.)

▽ For uncompensated Baro-VNAV systems, LNAV/VNAV NA below -5°C (23°F) or above 54°C (130°F). Circling Rwy 34R NA at night. DME/DME RNP-0.3 NA. For inop ALS, increase LNAV/VNAV Cats A/B visibility to RVR 5000.



MISSED APPROACH: Climb to 1100 then climbing right turn to 2000 direct ECEPO and hold.

ATIS 128.65	SEATTLE APP CON 128.5 306.9	PAINE TOWER ★ 132.95 (CTAF) 0 256.7	GND CON 121.8 339.8	CLNC DEL 127.175	UNICOM 122.95
-----------------------	---------------------------------------	---	-------------------------------	----------------------------	-------------------------



NW-1, 19 MAY 2022 to 16 JUN 2022

NW-1, 19 MAY 2022 to 16 JUN 2022

VGSI and descent angles not coincident (VGSI Angle 3.00/TCH 74).

4 NM Holding Pattern	EYWOK	ITIPE	ECEPO
3000 ← 343°	→ 163°	→ 163°	→ 163°
GP 3.00°			
TCH 57			
	6.8 NM	3.2 NM	1.1 NM
			*1.1 NM to RWY 16R
			RWY 16R
CATEGORY	A	B	C
LPV DA	770/18	200 (200-½)	NA
LNAV/VNAV DA	894/30	324 (300-⅝)	NA
LNAV MDA	1000/24	430 (400-½)	NA
C CIRCLING	1100-1	492 (500-1)	NA

