

# BOCA FIVE DEPARTURE (OBSTACLE) (NQX5.NQX)

KEY WEST NAS (BOCA CHICA FLD) (KNQX)  
KEY WEST, FLORIDA

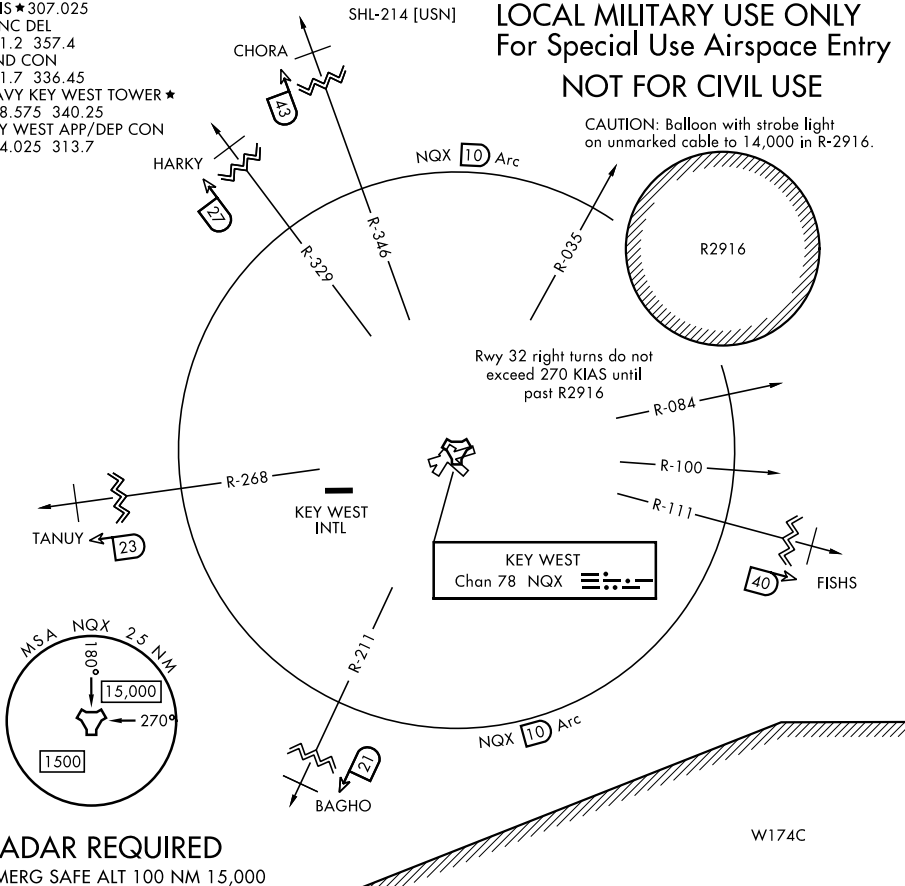
ATIS ★ 307.025  
CLNC DEL  
121.2 357.4  
GND CON  
121.7 336.45  
NAVY KEY WEST TOWER ★  
118.575 340.25  
KEY WEST APP/DEP CON  
124.025 313.7

## LOCAL MILITARY USE ONLY

### For Special Use Airspace Entry

### NOT FOR CIVIL USE

CAUTION: Balloon with strobe light on unmarked cable to 14,000 in R-2916.



SE-3, 19 MAY 2022 to 16 JUN 2022

SE-3, 19 MAY 2022 to 16 JUN 2022

**RADAR REQUIRED**  
EMERG SAFE ALT 100 NM 15,000

### DEPARTURE ROUTE DESCRIPTION

TAKE-OFF RWY 4, 8, 14, 22, 26\*32: Climbing via assigned heading, thence radar vectors to assigned departure fix. Cross 10 DME at or above 10,000, cross departure fix as assigned by ATC.

### LOST COMMUNICATIONS/NON-RADAR

If radar vectors are not received or available by NQX TACAN 8 DME, climb to 12,000, fly assigned departure heading to intercept NQX 10 DME arc. Arc to respective departure radial, then via departure radial to assigned departure fix.  
Do not ARC northeast of NQX TACAN between R-035 clockwise to R-084.

# BOCA FIVE DEPARTURE (OBSTACLE) (NQX5.NQX)

Amdt 1 21MAY20

KEY WEST, FLORIDA  
KEY WEST NAS (BOCA CHICA FLD) (KNQX)