

HI-TACAN W RWY 8

VORTAC EYW 113.5 Chan 82	APCH CRS 098°	Rwy Idg 10,001 TDZE 4 Arprt Elev 6
--	-------------------------	---

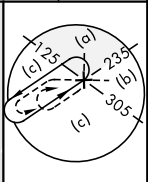
JAL-214 [USN]

KEY WEST NAS (BOCA CHICA FLD) (KNQX)

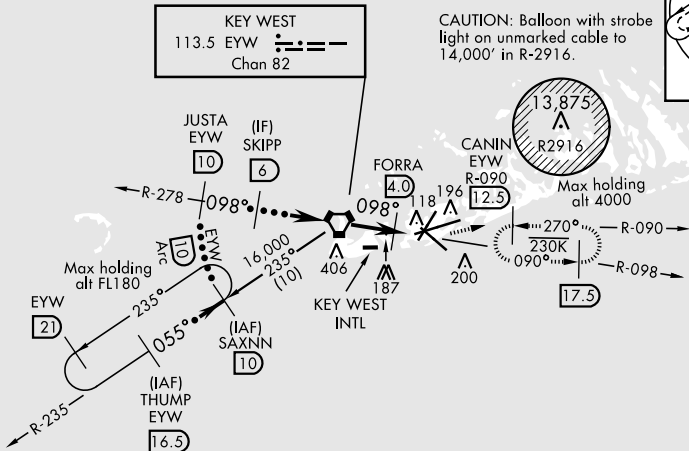
ALSIF-1

MISSED APPROACH: Climbing left turn to 1600 intercept EYW VORTAC R-090 to CANIN and hold.

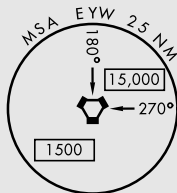
ATIS ★ 307.025	NAVY KEY WEST APP CON 124.025 313.7	NAVY KEY WEST TOWER ★ 118.575 340.25	GND CON 121.7 336.45	CLNC DEL 121.2 357.4	ASR/PAR
--------------------------	---	--	--------------------------------	--------------------------------	---------



CAUTION: Balloon with strobe light on unmarked cable to 14,000' in R-2916.

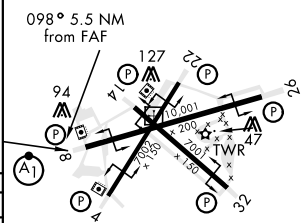


CAUTION: Descent gradient exceeds standards.
Recommend:
Continuous descent from IAF THUMP to SKIPP 800'/NM
Continuous descent from IAF SAXNN to SKIPP 730'/NM



EMERG SAFE ALT 100 NM 15,000

	† Or as directed by ATC		1600 EYW R-090	CANIN EYW 12.5	ELEV 6	TDZE 4
	†† FORRA to MAP					
CATEGORY	C	D	E			
S-8	440-1¼	436 (500-1¼)				
CIRCLING	500-1½ 494 (500-1½)	560-2	554 (600-2)			
HIRL all Rwy						



HI-TACAN W RWY 8

SE-3, 19 MAY 2022 to 16 JUN 2022

SE-3, 19 MAY 2022 to 16 JUN 2022