

# HI-TACAN X RWY 8

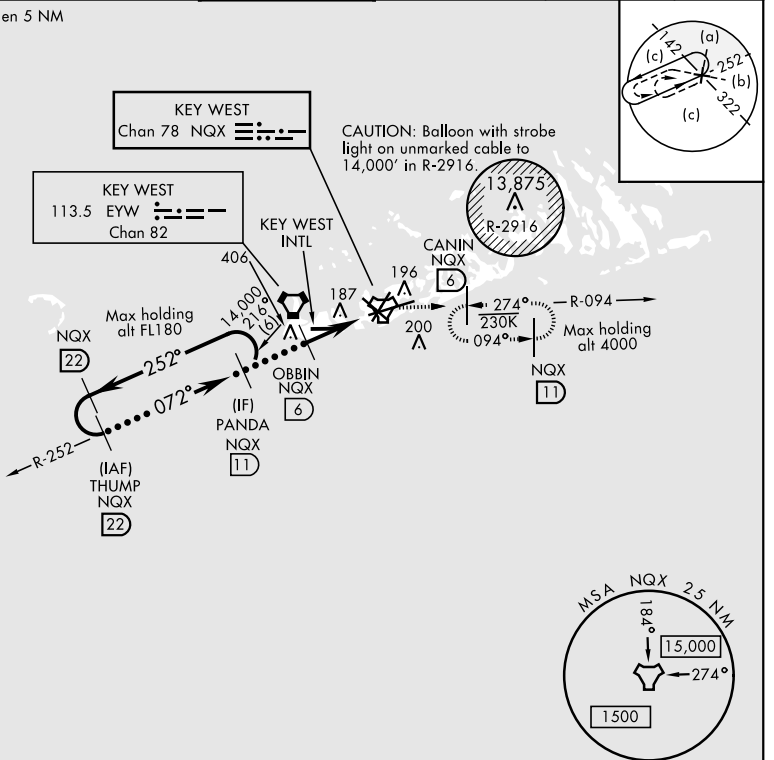
TACAN NQX Chan <b>78</b>	APCH CRS <b>072°</b>	Rwy Idg TDZE Arprt Elev <b>10,001</b> <b>4</b> <b>6</b>
-----------------------------	-------------------------	--

JAL-214 [USN] KEY WEST NAS (BOCA CHICA FLD) (KNQX)

MISSED APPROACH: Climb to 1600 via R-252 to NQX TACAN then via R-094 to CANIN (NQX R-094/6 DME) and hold.

ATIS ★ <b>307.025</b>	NAVY KEY WEST APP CON <b>124.025 313.7</b>	NAVY KEY WEST TOWER ★ <b>118.575 340.25</b>	GND CON <b>121.7 336.45</b>	CLNC DEL <b>121.2 357.4</b>	ASR/PAR
--------------------------	---	--	--------------------------------	--------------------------------	---------

CAUTION: Intmed seg len 5 NM



EMERG SAFE ALT 100 NM 15,000

THUMP R-252 22	PANDA 11	OBBIN 6	TACAN	ZALVO 1.1	ELEV 6	TDZE 4
14,000 Or as directed by ATC	3000	1600	2.4	1.1	1600 NQX R-252	1500 NQX R-094
2.97° TCH 44	072°	072°	4.9 NM			
CATEGORY	C	D	E			
S-8 *	460-7/8	456 (500-7/8)				
CIRCLING	500-1 1/2 494 (500-1 1/2)	560-2	554 (600-2)			
					072° to TACAN	HIRL all Rwy

# HI-TACAN X RWY 8

SE-3, 19 MAY 2022 to 16 JUN 2022

SE-3, 19 MAY 2022 to 16 JUN 2022