

KEY WEST, FLORIDA

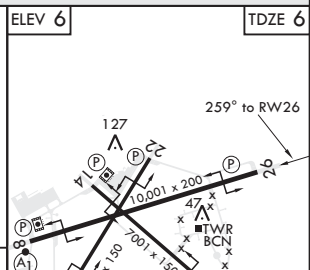
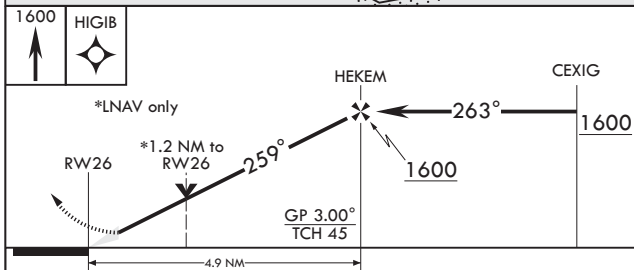
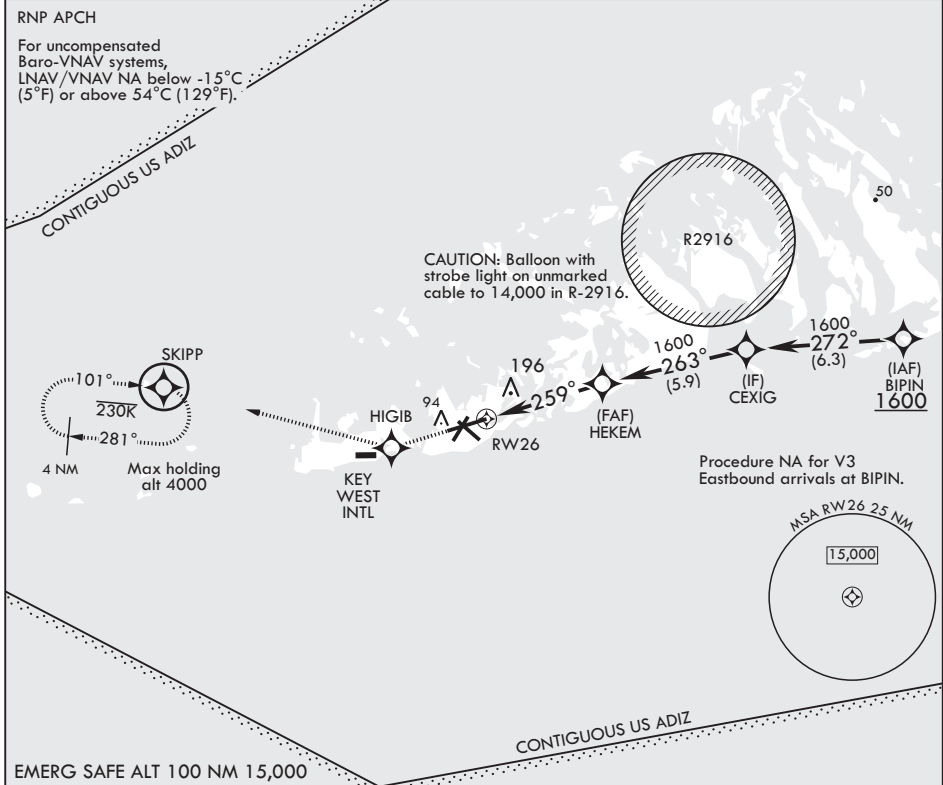
RNAV (GPS) RWY 26

APCH CRS 259°	Rwy Idg TDZE Arpt Elev	10,001 6 6
-------------------------	------------------------------	---------------------------------------

AL-214 (USN) KEY WEST NAS (BOCA CHICA FLD) (KNQX)

V MISSED APPROACH: Climb to 1600 direct HIGIB, track 291° to SKIPP and hold.

ATIS* 307.025	APP CON 124.025 313.7	NAVY KEY WEST TOWER* 118.575 340.25	GND CON 121.7 336.45	CLNC DEL 121.2 357.4	ASR/PAR
-------------------------	---------------------------------	---	--------------------------------	--------------------------------	---------



CATEGORY	A	B	C	D
LNAV/VNAV DA	291-7/8 285 (300-7/8)	302-7/8 296 (300-7/8)	310-7/8 304 (400-7/8)	321-7/8 315 (400-7/8)
LNAV MDA	420-1 414 (500-1)	500-1 (500-1)	420-1 1/2 414 (500-1 1/2)	560-2 (500-1 1/2)
CRCLING	460-1 454 (500-1)	500-1 494 (500-1)	500-1 1/2 494 (500-1 1/2)	560-2 554 (600-2)

HIRL all Rwys

KEY WEST, FLORIDA 24°34'N - 81°41'W KEY WEST NAS (BOCA CHICA FLD) (KNQX)

Amdt 1 21MAY20

RNAV (GPS) RWY 26

SE-3, 19 MAY 2022 to 16 JUN 2022

SE-3, 19 MAY 2022 to 16 JUN 2022