

KEY WEST, FLORIDA

RNAV (GPS) RWY 32

APCH CRS 317°	Rwy Idg 7001
	TDZE 4
	Arpt Elev 6

AL-214 (USN) KEY WEST NAS (BOCA CHICA FLD) (KNQX)

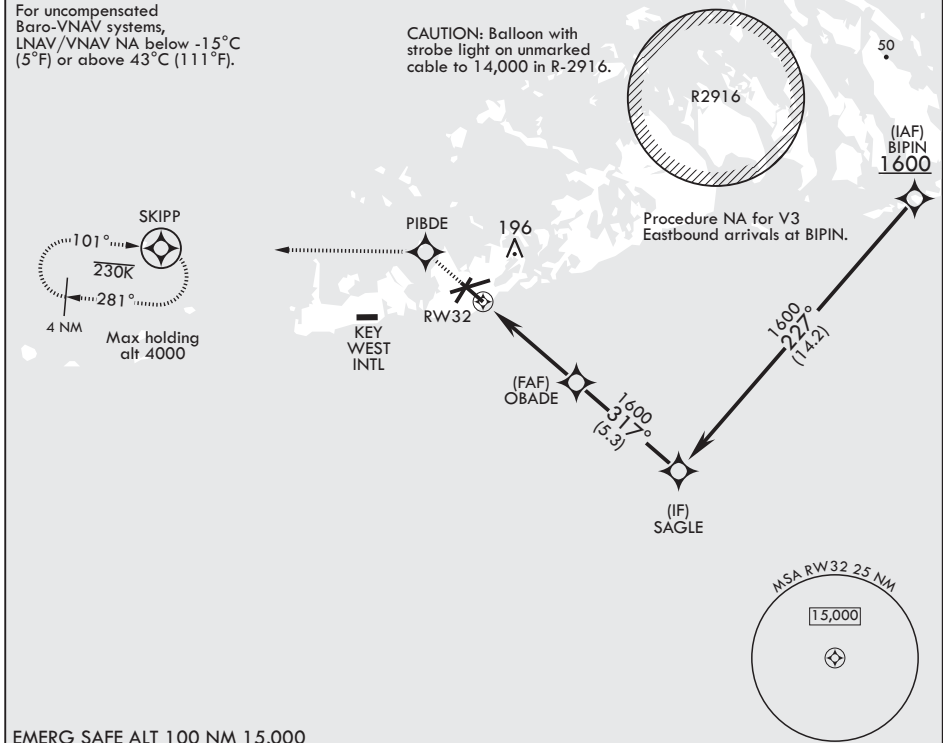
⚠ * When runways 14, 22 VGSi inop, circling to runways 14, 22 not authorized at night.
MISSED APPROACH: (Do not exceed 230 KIAS until PIBDE.) Climb to 1600 direct PIBDE, track 277° to SKIPP and hold, continue climb-in-hold to 1600.

ATIS* 307.025	APP CON 124.025 313.7	NAVY KEY WEST TOWER* 118.575 340.25	GND CON 121.7 336.45	CLNC DEL 121.2 357.4	ASR/PAR
------------------	--------------------------	--	-------------------------	-------------------------	---------

RNP APCH

For uncompensated Baro-VNAV systems, LNAV/VNAV NA below -15°C (5°F) or above 43°C (111°F).

CAUTION: Balloon with strobe light on unmarked cable to 14,000 in R-2916.



EMERG SAFE ALT 100 NM 15,000

1600	PIBDE	ELEV 6	TDZE 4
↑	◆		▲ 126
†LNAV only			
RW32	OBADE	SAGLE	BIPIN
↑1.3 NM to RW32	←317°	←227°	←1600
4.9 NM	1600	1600	1600
GP 3.00° TCH 45			
CATEGORY	A	B	C
LNAV/VNAV DA	254-1	250	(300-1)
LNAV MDA	460-1	456 (500-1)	460-1 3/8 456 (500-1 3/8)
CIRCLING*	460-1 454 (500-1)	500-1 494 (500-1)	500-1 1/2 494 (500-1 1/2)
			560-2 554 (600-2)

HIRL all Rwys

KEY WEST, FLORIDA
Amdt 1 21MAY20

24°34'N - 81°41'W

KEY WEST NAS (BOCA CHICA FLD) (KNQX)

RNAV (GPS) RWY 32

SE-3, 19 MAY 2022 to 16 JUN 2022

SE-3, 19 MAY 2022 to 16 JUN 2022