

KEY WEST, FLORIDA

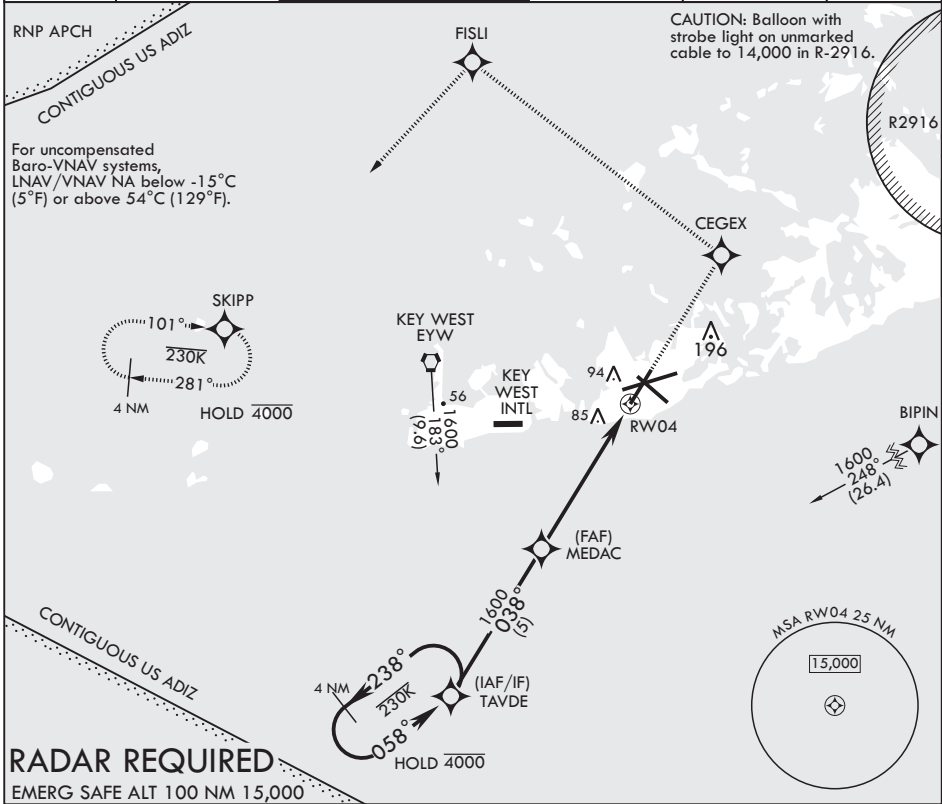
RNAV (GPS) RWY 4

APCH CRS 038°	Rwy Idg TDZE Arpt Elev	7002 4 6
------------------	------------------------------	----------------

AL-214 (USN) KEY WEST NAS (BOCA CHICA FLD) (KNQX)

⚠ MISSED APPROACH: (Do not exceed 230 KIAS until CEGEX.) Climb to 1600 direct CEGEX, track 314° to FISLI, track 229° to SKIPP and hold.

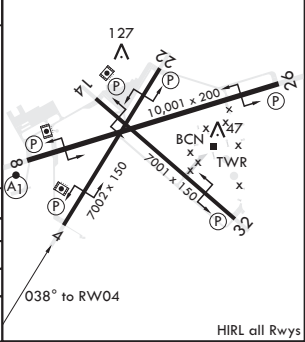
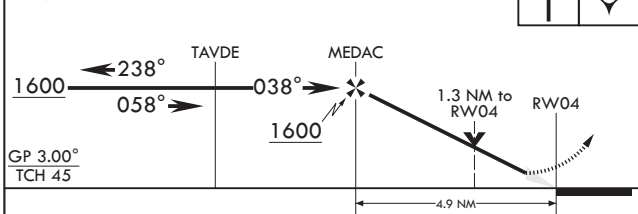
ATIS★ 307.025	APP CON 124.025 313.7	NAVY KEY WEST TOWER★ 118.575 340.25	GND CON 121.7 336.45	CLNC DEL 121.2 357.4	ASR/PAR
------------------	--------------------------	--	-------------------------	-------------------------	---------



RADAR REQUIRED
EMERG SAFE ALT 100 NM 15,000

VGSI and RNAV glidepath not coincident (VGSI Angle 3.00/TCH 35).

1600 CEGEX ELEV 6 TDZE 4



CATEGORY	A		B		C		D	
LNAV/VNAV DA	245-¾		250		460-1¾		456 (300-¾)	
LNAV MDA	460-1	456 (500-1)	460-1¾	456 (500-1%)	460-1¾	456 (500-1%)	460-1¾	456 (500-1%)
Ⓢ CIRCLING	460-1	454 (500-1)	500-1	494 (500-1)	500-1½	494 (500-1½)	560-2	554 (600-2)

KEY WEST, FLORIDA 24°34'N - 81°41'W KEY WEST NAS (BOCA CHICA FLD) (KNQX)

Amdt 1 21MAY20

RNAV (GPS) RWY 4

SE-3, 19 MAY 2022 to 16 JUN 2022

SE-3, 19 MAY 2022 to 16 JUN 2022