

KEY WEST, FLORIDA

RNAV (GPS) RWY 8

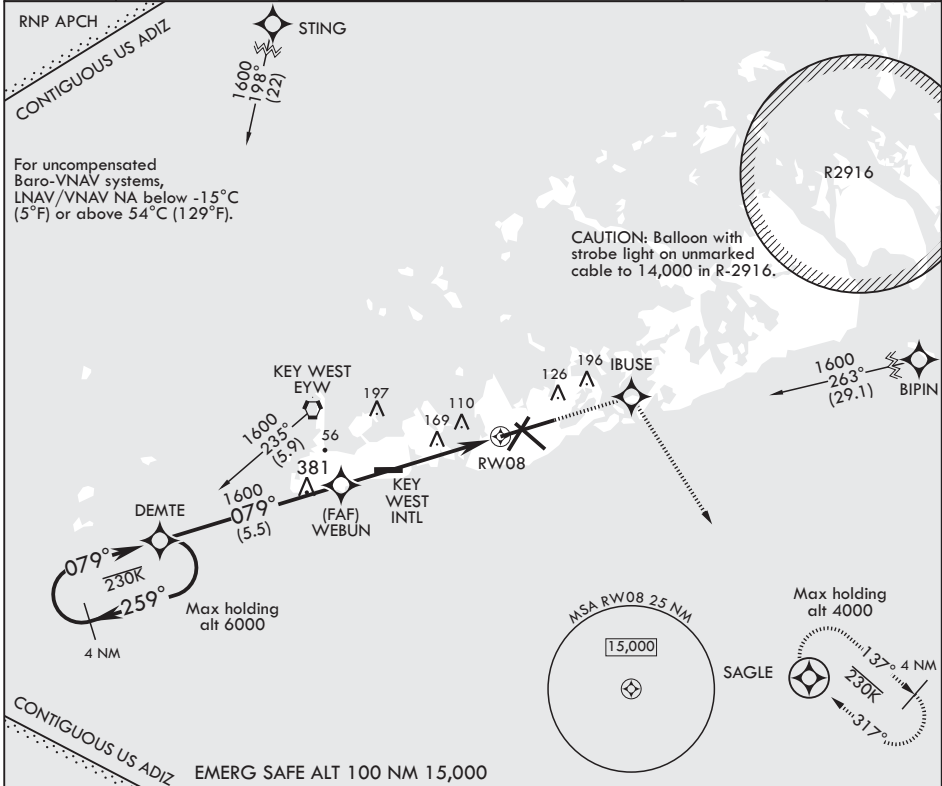
APCH CRS	Rwy Idg	10,001
079°	TDZE	4
	Arprt Elev	6

AL-214 (USN) KEY WEST NAS (BOCA CHICA FLD) (KNQX)

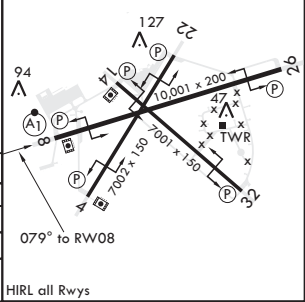
V * When ALS inop, increase vis to 1 1/4 miles.
 ** When ALS inop, increase CAT AB vis to 1 mile, CAT CD vis to 1 3/8 miles.

ALS-1 MISSED APPROACH: (Do not exceed 230 KIAS until IBUSE) Climb to 1600 direct IBUSE, track 154° to SAGLE and hold, continue climb-in-hold to 1600.

ATIS★	APP CON	NAVY KEY WEST TOWER★	GND CON	CLNC DEL	ASR/PAR
307.025	124.025 313.7	118.575 340.25	121.7 336.45	121.2 357.4	



	1600		IBUSE	ELEV 6	TDZE 4
	tr 154°				
GP 3.00°	TCH 45				
	DEMTTE	WEBUN			
	1600 ← 259°	079° →	↑ LNAV only		
	079° →	1600	↑ 1.3 NM to RWY08		
			4.9 NM		
CATEGORY	A	B	C	D	
LNAV/VNAV DA*	427-3/4		423	(500-3/4)	
LNAV MDA**	460-1/2	456 (500-1/2)	460-7/8	456 (500-7/8)	
CRCLING	460-1	500-1	500-1 1/2	560-2	
	454 (500-1)	494 (500-1)	494 (500-1 1/2)	554 (600-2)	



SE-3, 19 MAY 2022 to 16 JUN 2022

SE-3, 19 MAY 2022 to 16 JUN 2022

KEY WEST, FLORIDA

24°34'N - 81°41'W

KEY WEST NAS (BOCA CHICA FLD) (KNQX)

Amdt 2 21MAY20

RNAV (GPS) RWY 8