

TACAN RWY 26

TACAN	NQX	APCH CRS	Rwy Idg	10,001
Chan	78	274°	TDZE	6
			Arprt Elev	6

AL-214 [USN]

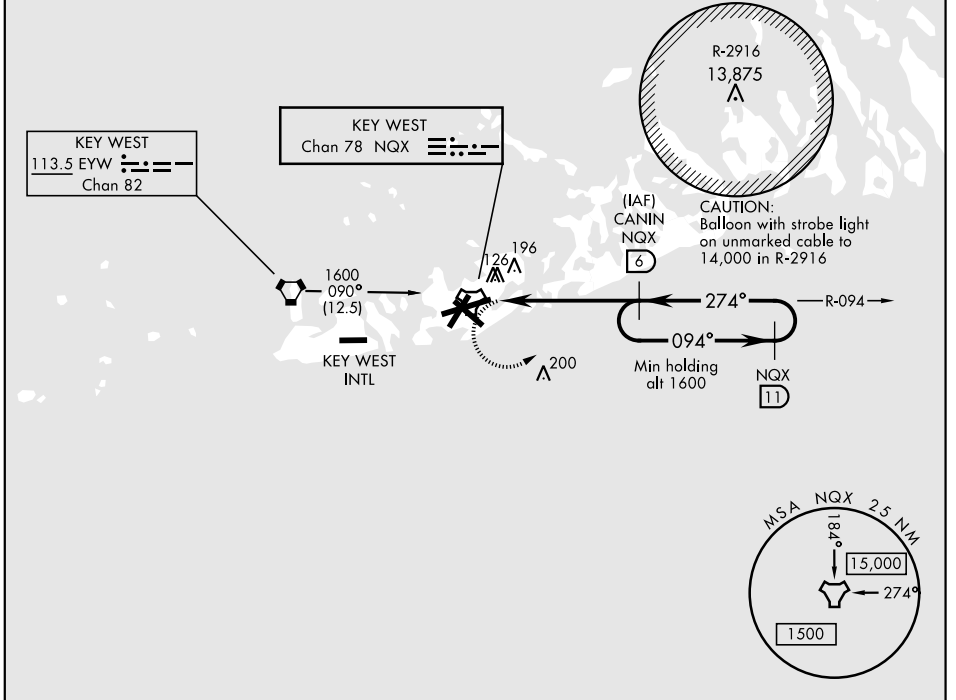
KEY WEST NAS (BOCA CHICA FLD) (KNQX)

† MISSED APPROACH: Climbing left turn to 1600 to intercept NQX R-094 to CANIN (NQX R-094/6 DME) and hold.

ATIS ★	NAVY KEY WEST APP CON	NAVY KEY WEST TOWER ★	GND CON	CLNC DEL	ASR/PAR
307.025	124.025 313.7	118.575 340.25	121.7 336.45	121.2 357.4	

† CAUTION: Missed Approach
Minimum Climb Rate to 1600

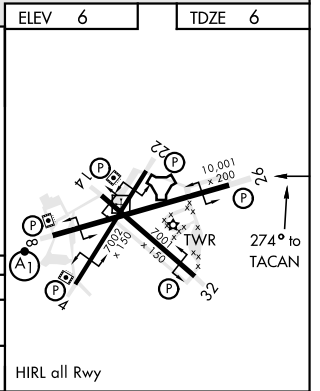
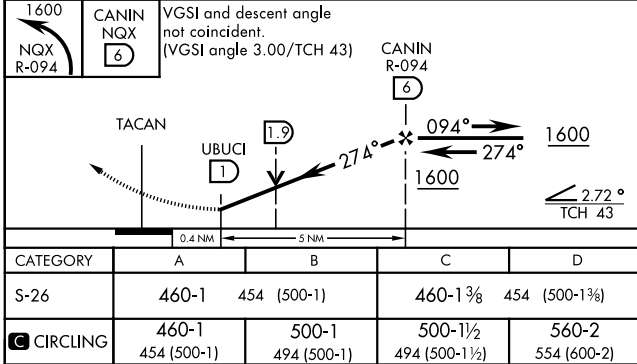
Knots	60	120	180	240	300	360
V/V(fpm)	290	580	870	1160	1450	1740



SE-3, 19 MAY 2022 to 16 JUN 2022

SE-3, 19 MAY 2022 to 16 JUN 2022

EMEG SAFE ALT 100 NM 15,000



KEY WEST, FLORIDA 24°34'N-81°41'W KEY WEST NAS (BOCA CHICA FLD) (KNQX)

Amdt 3 21MAY20

TACAN RWY 26