

KEY WEST, FLORIDA

TACAN RWY 32

TACAN	NQX	APCH CRS	Rwy ldg TDZE	7001
Chan 78		335°	Arprt Elev	4
				6

AL-214 [USN] KEY WEST NAS (BOCA CHICA FLD) (KNQX)

† MISSED APPROACH: Climb to 500. Then climbing right turn to 1600, intercept NQX R-094 to CANIN (NQX R-094/6 DME) and hold.

ATIS ★	NAVY KEY WEST APP CON	NAVY KEY WEST TOWER ★	GND CON	CLNC DEL	ASR/PAR
307.025	124.025 313.7	118.575 340.25	121.7 336.45	121.2 357.4	

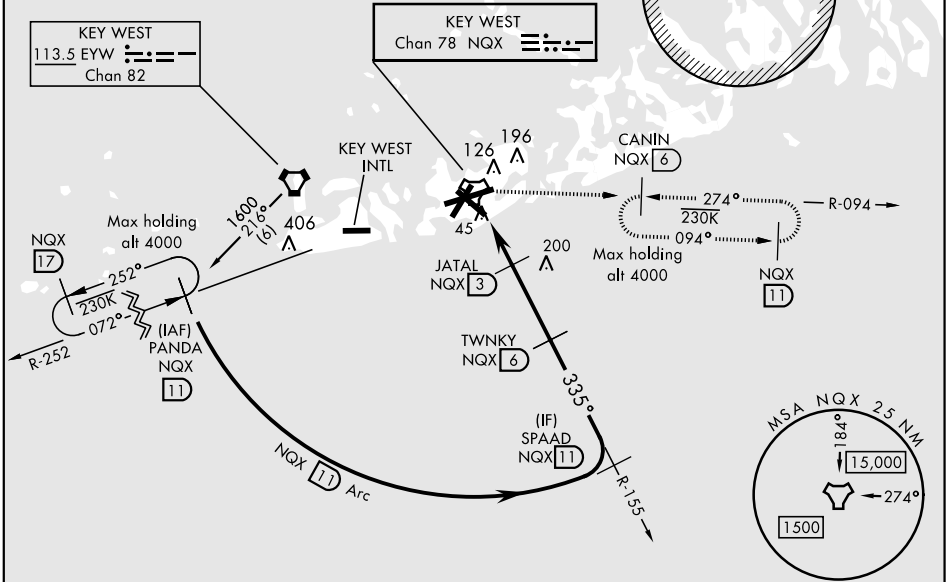
CAUTION: CAT CD intrmd seg len 5 NM.

CAUTION: Balloon with strobe light on unmarked cable to 14,000 in R-2916.

† CAUTION: Missed Approach Minimum Climb Rate to 1600

Knots	60	120	180	240	300	360
V/V(fpm)	280	560	840	1120	1400	1680

ATC Minimum Climb Rate

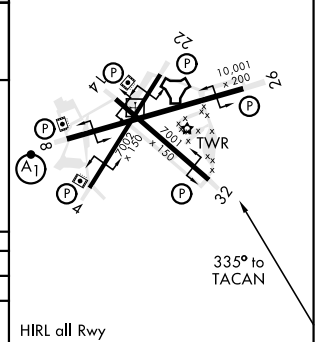
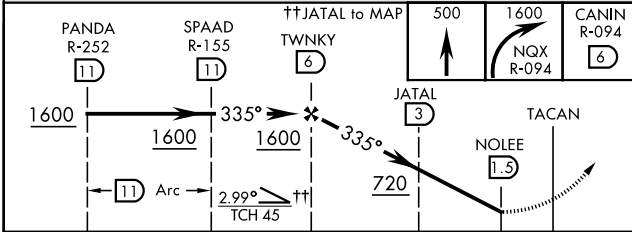


SE-3, 19 MAY 2022 to 16 JUN 2022

SE-3, 19 MAY 2022 to 16 JUN 2022

EMERG SAFE ALT 100 NM 15,000

ELEV	6	TDZE	4
------	---	------	---



CATEGORY	A	B	C	D
S-32		300-1	296 (300-1)	
CIRCLING	460-1 454 (500-1)	500-1 494 (500-1)	500-1½ 494 (500-1½)	560-2 554 (600-2)

HIRL all Rwy

KEY WEST, FLORIDA
Amdt 3 21MAY20

24°34'N-81°41'W KEY WEST NAS (BOCA CHICA FLD) (KNQX)

TACAN RWY 32