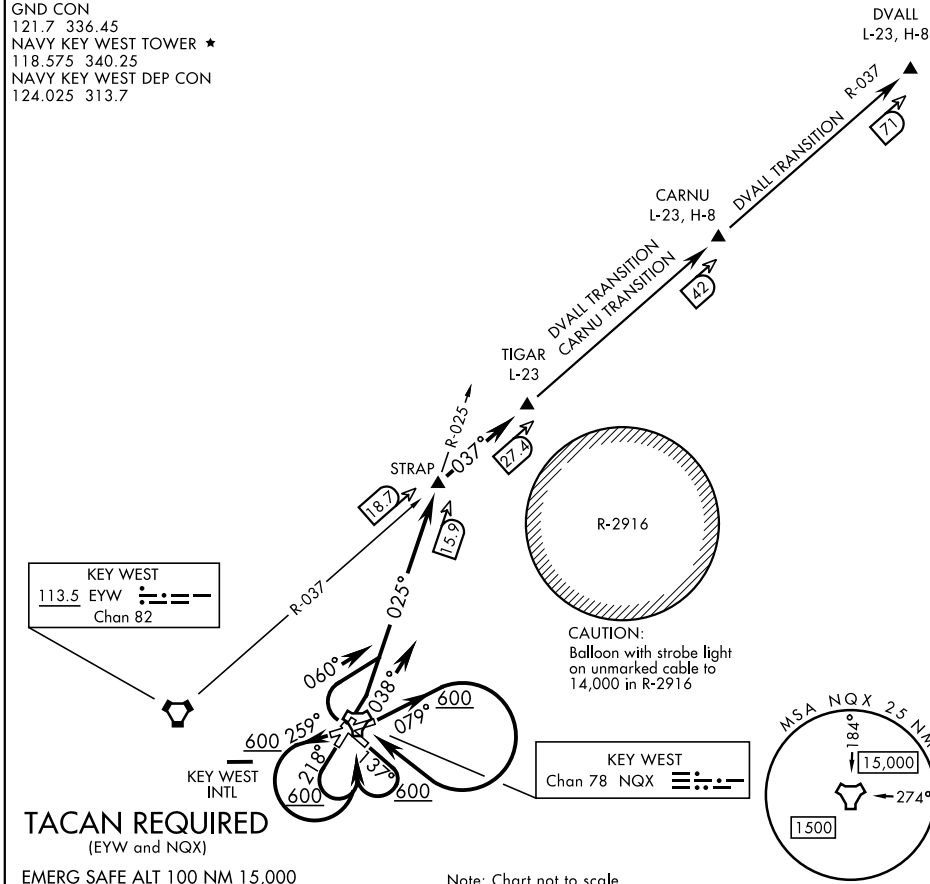


TIGAR THREE DEPARTURE (OBSTACLE) (TIGAR3.TIGAR)

ATIS ★ 307.025
 CLNC DEL 121.2 357.4
 GND CON 121.7 336.45
 NAVY KEY WEST TOWER ★ 118.575 340.25
 NAVY KEY WEST DEP CON 124.025 313.7

SHL-214 [USN]



TACAN REQUIRED
(EYW and NQX)

EMERG SAFE ALT 100 NM 15,000

Note: Chart not to scale

DEPARTURE ROUTE DESCRIPTION

- TAKE-OFF RWY 4:** Climb heading 038° turn right to intercept NQX TACAN R-025, thence...
 - TAKE-OFF RWY 8:** Climb heading 079° to 600, then climbing right turn direct NQX TACAN thence...
 - TAKE-OFF RWY 14:** Climb heading 137° to 600, then climbing right turn direct NQX TACAN thence...
 - TAKE-OFF RWY 22:** Climb heading 218° to 600, then climbing left turn direct NQX TACAN, thence...
 - TAKE-OFF RWY 26:** Climb heading 259° to 600, then climbing left turn direct NQX TACAN, thence...
 - TAKE-OFF RWY 32:** Climbing right turn heading 060° to intercept NQX TACAN R-025, thence...
- ...via NQX R-025 to STRAP, then via EYW VORTAC R-037 to TIGAR, then via assigned transition or route.
- CARNU TRANSITION:** via EYW R-037 to CARNU.
- DVALL TRANSITION:** via EYW R-037 to DVALL.

TIGAR THREE DEPARTURE (OBSTACLE) (TIGAR3.TIGAR)

SE-3, 19 MAY 2022 to 16 JUN 2022

SE-3, 19 MAY 2022 to 16 JUN 2022