

KEY WEST, FLORIDA

TACAN Y RWY 8

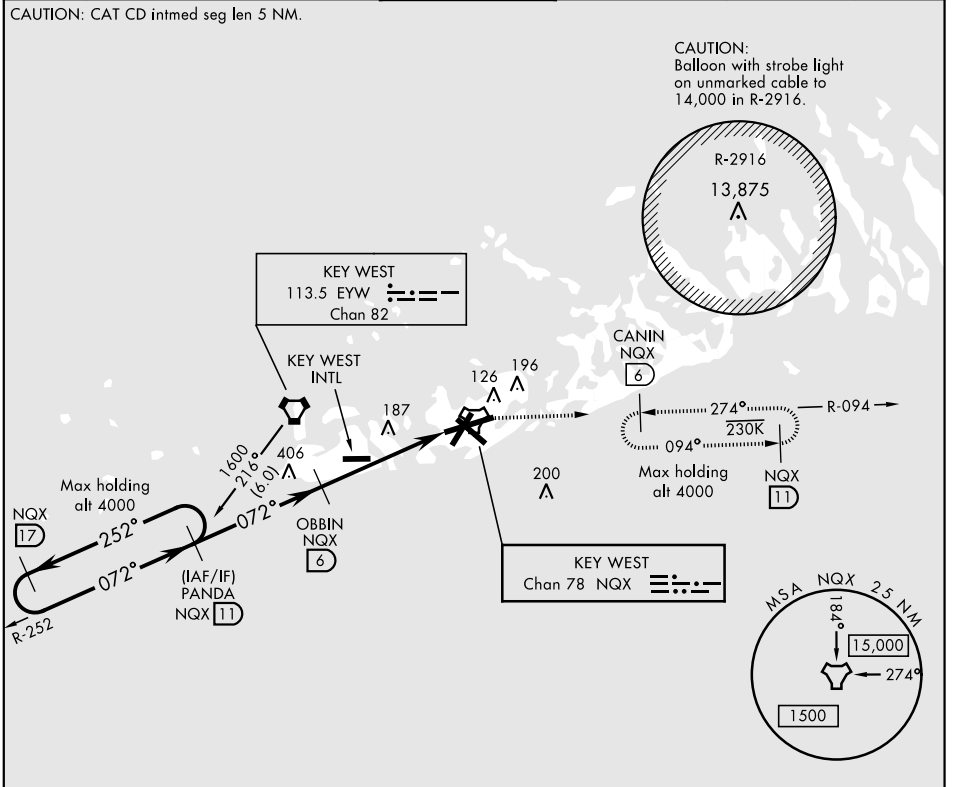
TACAN	NQX	APCH CRS	Rwy ldg	10,001
Chan	78	072°	TDZE	4
			Arprt Elev	6

AL-214 [USN]

KEY WEST NAS (BOCA CHICA FLD) (KNQX)

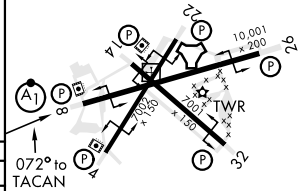
▼ * When ALS inop, increase CAT AB vis to 1 mile, CAT CD vis to 1 3/8 miles.
ALSf-1 (A1)
MISSED APPROACH: Climb to 1600 via R-252 to NQX TACAN then via R-094 to CANIN (NQX R-094/6 DME) and hold.

ATIS *	NAVY KEY WEST APP CON	NAVY KEY WEST TOWER *	GND CON	CLNC DEL	ASR/PAR
307.025	124.025 313.7	118.575 340.25	121.7 336.45	121.2 357.4	



EMERG SAFE ALT 100 NM 15,000

	ELEV 6		TDZE 4	
	PANDA R-252 NQX 11 OBBIN NQX 6		1600 NQX R-252 NQX NQX R-094	
	1600 ← 252° 072° → 1600 072° → TACAN 2.97° TCH 44 4.9 NM ZALVO 1.1			
CATEGORY	A	B	C	D
S-8 *	460-1/2	456 (500-1/2)	460-7/8	456 (500-7/8)
CIRCLING	460-1 454 (500-1)	500-1 494 (500-1)	500-1 1/2 494 (500-1 1/2)	560-2 554 (600-2)
HIRL all Rwy				



KEY WEST, FLORIDA 24°34'N-81°41'W KEY WEST NAS (BOCA CHICA FLD) (KNQX)

Amtd 3 21MAY20

TACAN Y RWY 8

SE-3, 19 MAY 2022 to 16 JUN 2022

SE-3, 19 MAY 2022 to 16 JUN 2022