

WAAS CH <b>97613</b> <b>W08A</b>	APP CRS <b>081°</b>	Rwy Idg <b>6849</b> TDZE <b>4229</b> Apt Elev <b>4229</b>
--	------------------------	---

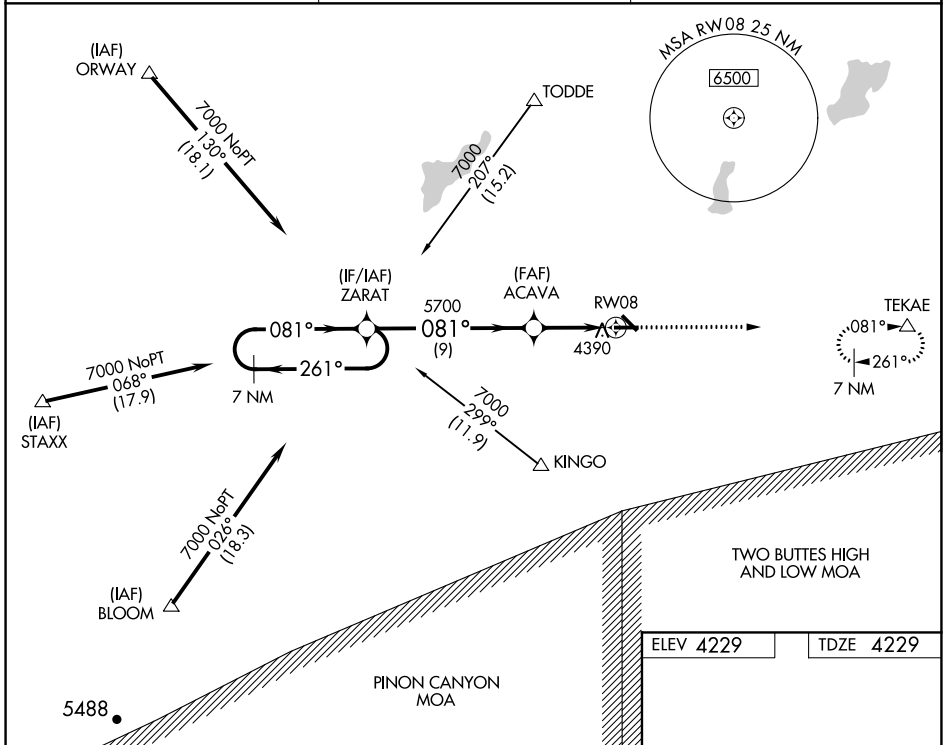
# RNAV (GPS) RWY 8

LA JUNTA MUNI (LHX)

**⚠** Baro-VNAV NA when using Lamar altimeter setting. For uncompensated Baro-VNAV systems, LNAV/VNAV NA below -23°C (-9°F) or above 40°C (104°F). DME/DME RNP-0.3 NA.  
**⚠** Visibility reduction by helicopters NA. When local altimeter setting not received, use Lamar altimeter setting and increase all DA/MDA 180 feet and increase all visibilities ¾ mile.

**MISSED APPROACH:**  
Climb to 7000 direct  
TEKAE and hold.

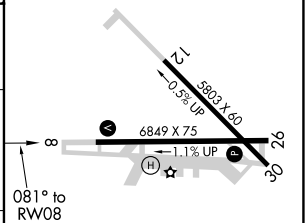
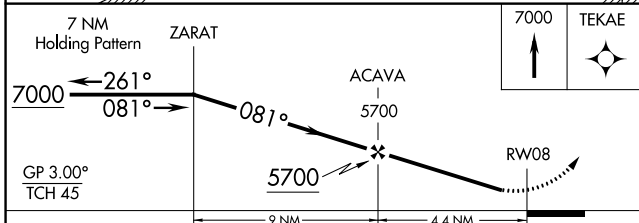
ASOS <b>135.525</b>	DENVER CENTER <b>128.375 379.95</b>	UNICOM <b>123.0 (CTAF) 0</b>
------------------------	--	---------------------------------



SW-1, 19 MAY 2022 to 16 JUN 2022

SW-1, 19 MAY 2022 to 16 JUN 2022

ELEV 4229	TDZE 4229
-----------	-----------



CATEGORY	A	B	C	D
LPV DA	4528-1		299 (300-1)	
LNAV/VNAV DA	4738-1¾		509 (600-1¾)	
LNAV MDA	4700-1	471 (500-1)	4700-1¼ 471 (500-1¼)	4700-1½ 471 (500-1½)
CIRCLING	4740-1 511 (600-1)		4740-1½ 511 (600-1½)	4780-2 551 (600-2)

REIL Rwy 8 and 26 **0**  
MIRL Rwy 8-26 **0**