


ILS or LOC RWY 18R

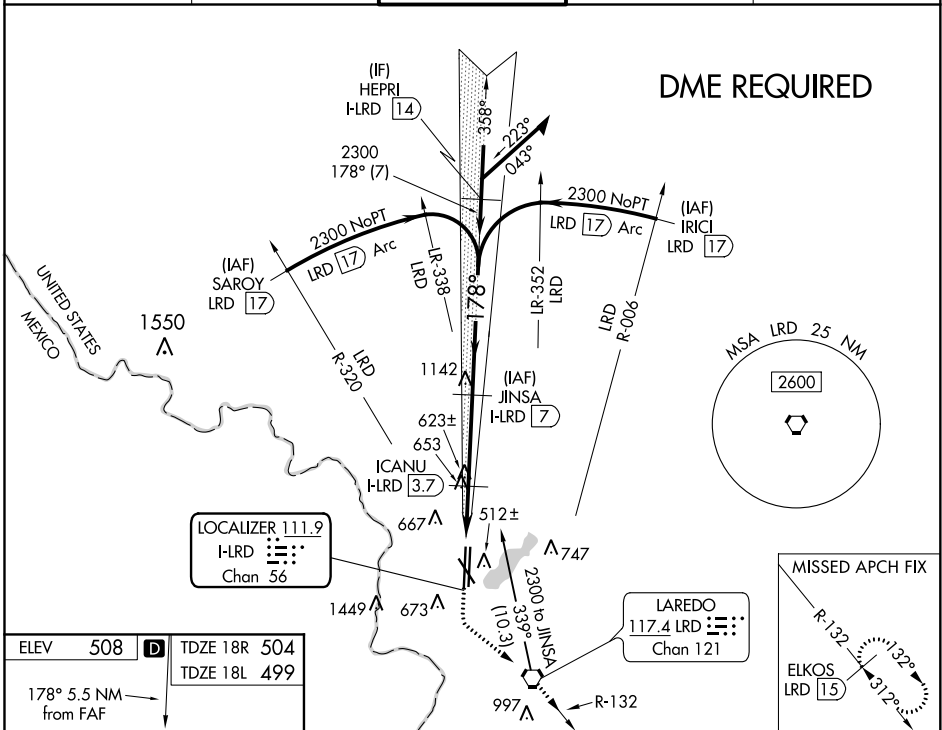
LAREDO INTL (LRD)

LOC/DME I-LRD	APP CRS	18R	18L
111.9 Chan 56	178°	Rwy Idg 8743 8236	
		TDZE 504 499	
		Apt Elev 508 508	

▽ Circling NA west of Rwy 14 and 36L.
△ DME required.
 For inop ALS, increase S-ILS 18R Cat E visibility to ¾ SM and increase S-LOC 18R Cat C/D/E visibility to 1 ¼ SM.

MALSR
 MISSED APPROACH: Climb to 1100 then climbing left turn to 2500 direct LRD VORTAC and on LRD VORTAC R-132 to ELKOS/LRD 15 DME and hold.

ATIS 125.775	HOUSTON CENTER 127.8 307.2	LAREDO TOWER ★ 120.1 (CTAF) 0 257.9	GND CON 121.8	UNICOM 122.95
------------------------	--------------------------------------	--	-------------------------	-------------------------

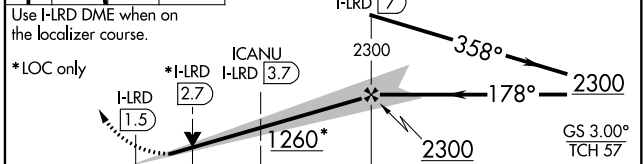


SC-3, 19 MAY 2022 to 16 JUN 2022

SC-3, 19 MAY 2022 to 16 JUN 2022

ELEV 508	D TDZE 18R 504 TDZE 18L 499
178° 5.5 NM from FAF	

1100 2500 LRD ELKOS LRD **15** VGSI and ILS glidepath not coincident (VGSI Angle 3.00/TCH 50).
 Remain within 15 NM



CATEGORY	A	B	C	D	E
S-ILS 18R	704-1/2 200 (200-1/2)				
S-LOC 18R	920-1/2	416 (500-1/2)	920-3/4		416 (500-3/4)
SIDESTEP 18L	920-1	421 (500-1)	920-1 1/2	920-2	421 (500-2)
C CIRCLING	940-1	980-1	1100-1 1/2	1200-2 1/4	1200-2 1/2
	432 (500-1)	472 (500-1)	592 (600-1 1/2)	692 (700-2 1/4)	692 (700-2 1/2)

MIRL Rwy 14-32
 HIRL Rwy 18R-36L and 18L-36R