

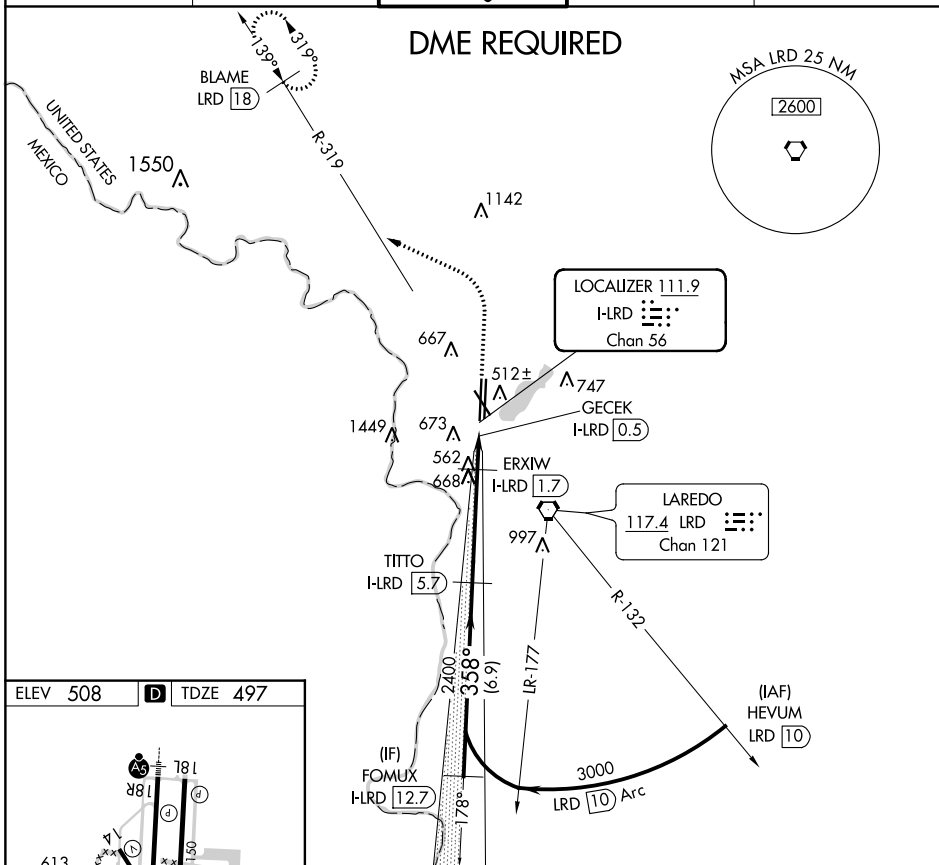
LOC/DME I-LRD 111.9 Chan 56	APP CRS 358°	Rwy Idg 8623 TDZE 497 Apt Elev 508
--	------------------------	--

LOC BC RWY 36L

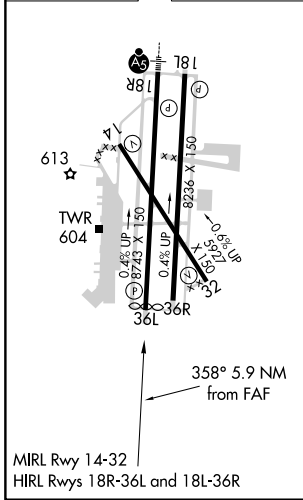
LAREDO INTL (L.R.D)

⚠ Circling NA west of Rwys 14 and 36L. **MISSED APPROACH:** Climb to 1100 then climbing left turn to 2600 on heading 290° and on LRD VORTAC R-319 to BLAME/LRD 18 DME and hold.

ATIS 125.775	HOUSTON CENTER 127.8 307.2	LAREDO TOWER ★ 120.1(CTAF) 257.9	GND CON 121.8	UNICOM 122.95
------------------------	--------------------------------------	--	-------------------------	-------------------------

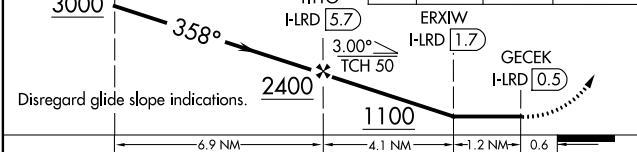


ELEV 508	D	TDZE 497
----------	----------	----------



FOMUX I-LRD 12.7 Use I-LRD DME when on the localizer course.

1100	2600	LRD R-319	BLAME LRD 18
------	------	-----------	--------------



Disregard glide slope indications.	6.9 NM	4.1 NM	1.2 NM	0.6	
CATEGORY	A	B	C	D	E
S-LOC 36L	820-1 323 (400-1)				
C CIRCLING	940-1 432 (500-1)	980-1 472 (500-1)	1100-1½ 592 (600-1½)	1200-2¼ 692 (700-2¼)	1200-2½ 692 (700-2½)