

WAAS CH 65841 W14A	APP CRS 142°	Rwy Idg TDZE 508 Apt Elev 508
--	------------------------	---

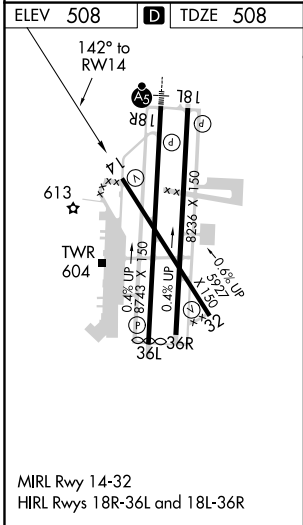
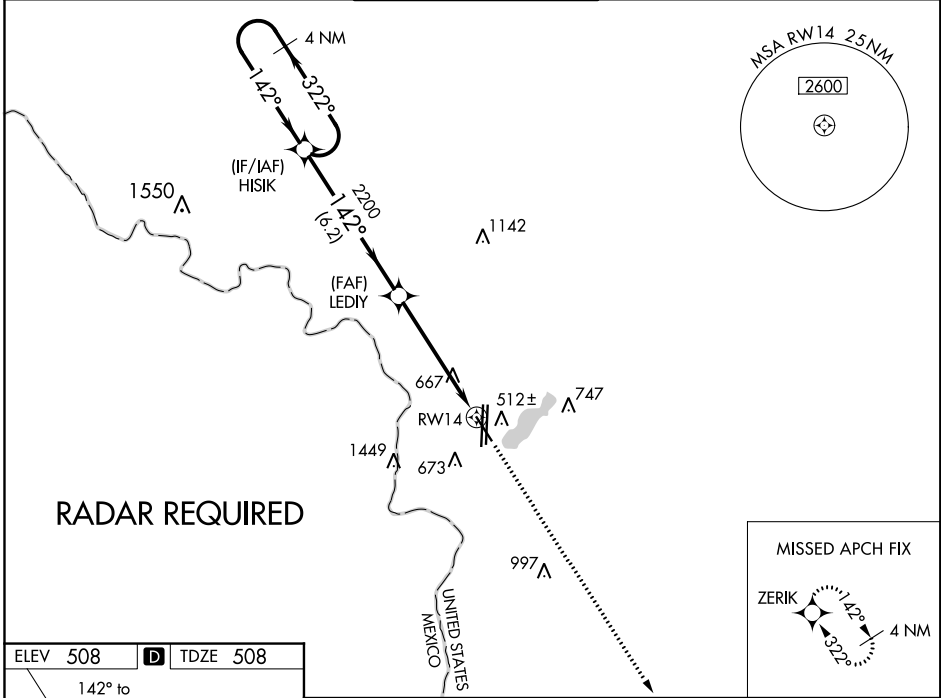
RNAV (GPS) RWY 14

LAREDO INTL (L.R.D)

⚠ For uncompensated Baro-VNAV systems, LNAV/VNAV NA below 1°C (34°F) or above 54°C (130°F). Circling NA west of Rwy 14 and 36L.
⚠ DME/DME RNP-0.3 NA.

MISSED APPROACH: Climb to 2500 direct ZERIK and hold.

ATIS 125.775	HOUSTON CENTER 127.8 307.2	LAREDO TOWER * 120.1(CTAF) 257.9	GND CON 121.8	UNICOM 122.95
------------------------	--------------------------------------	--	-------------------------	-------------------------



4 NM Holding Pattern		HISIK		LEDIY		ZERIK	
3000		322°		2200		2500	
142°		142°		2200		*LNAV only.	
GP 3.00°		TCH 55		*1.3 NM to RWY 14			
		6.2 NM		3.9 NM		1.3	
CATEGORY	A	B	C	D	E		
LPV DA		758- ³ / ₄		250 (300- ³ / ₄)			
LNAV/VNAV DA		810- ⁷ / ₈		302 (400- ⁷ / ₈)			
LNAV MDA	960-1	452 (500-1)		960-1 ³ / ₈		452 (500-1 ³ / ₈)	
C CIRCLING	960-1 452 (500-1)	980-1 472 (500-1)	1100-1 ¹ / ₂ 592 (600-1 ¹ / ₂)	1200-2 ¹ / ₄ 692 (700-2 ¹ / ₄)	1200-2 ¹ / ₂ 692 (700-2 ¹ / ₂)		

SC-3, 19 MAY 2022 to 16 JUN 2022

SC-3, 19 MAY 2022 to 16 JUN 2022