

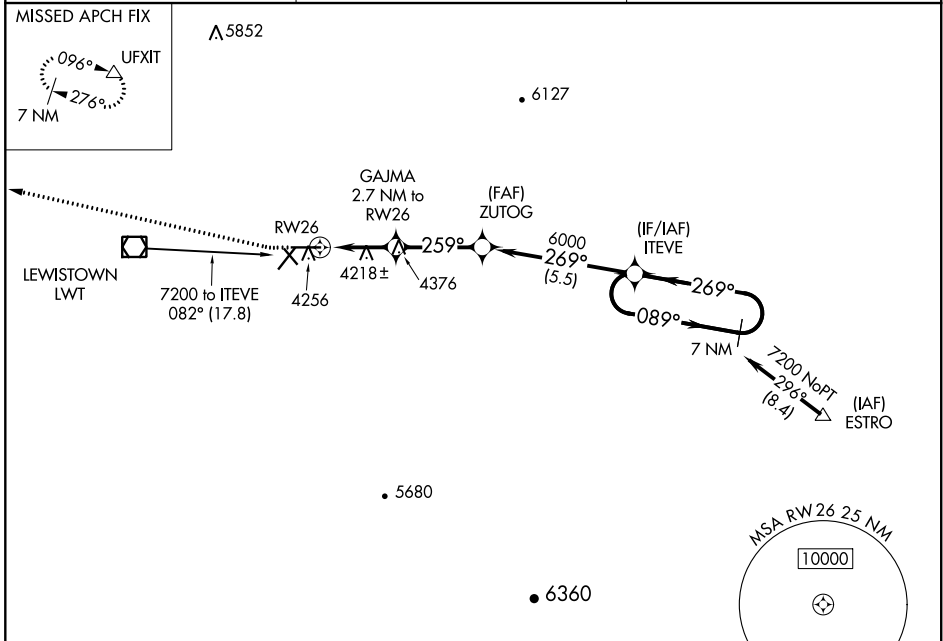
WAAS CH <b>50230</b> <b>W26A</b>	APP CRS <b>259°</b>	Rwy Idg TDZE <b>4124</b> Apt Elev <b>4170</b>
--	------------------------	---

# RNAV (GPS) RWY 26

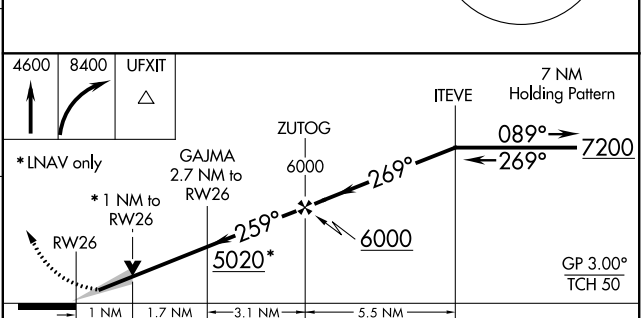
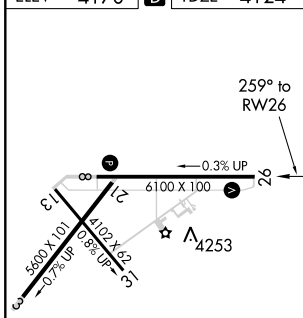
LEWISTOWN MUNI (LWT)

**⚠** For uncompensated Baro-VNAV systems, LNAV/VNAV NA below -26°C (-14°F) or above 50°C (123°F).  
**⚠** MISSED APPROACH: Climb to 4600 then climbing right turn to 8400 direct UFXIT and hold, continue climb-in-hold to 8400.  
 DME/DME RNP-0.3 NA.

ASOS <b>118.375</b>	SALT LAKE CENTER <b>133.4 285.4</b>	UNICOM <b>123.0 (CTAF) 0</b>
------------------------	--	---------------------------------



ELEV 4170	<b>D</b>	TDZE 4124
-----------	----------	-----------



CATEGORY	A	B	C	D
LPV DA		4324- <sup>3</sup> / <sub>4</sub>	200 (200- <sup>3</sup> / <sub>4</sub> )	
LNAV/VNAV DA		4389- <sup>7</sup> / <sub>8</sub>	265 (300- <sup>7</sup> / <sub>8</sub> )	
LNAV MDA		4480-1	356 (400-1)	
<b>C</b> CIRCLING	4680-1 510 (600-1)	4820-1 650 (700-1)	4980-2 <sup>1</sup> / <sub>4</sub> 810 (900-2 <sup>1</sup> / <sub>4</sub> )	5240-3 1070 (1100-3)

REIL Rwy 8 and 26 **0**  
 MIRL Rwy 3-21  
 MIRL 8-26 and 13-31 **0**

NW-1, 19 MAY 2022 to 16 JUN 2022

NW-1, 19 MAY 2022 to 16 JUN 2022