

WAAS CH <b>86700</b> <b>W08A</b>	APP CRS <b>079°</b>	Rwy Idg <b>6100</b> TDZE <b>4129</b> Apt Elev <b>4170</b>
--	------------------------	---

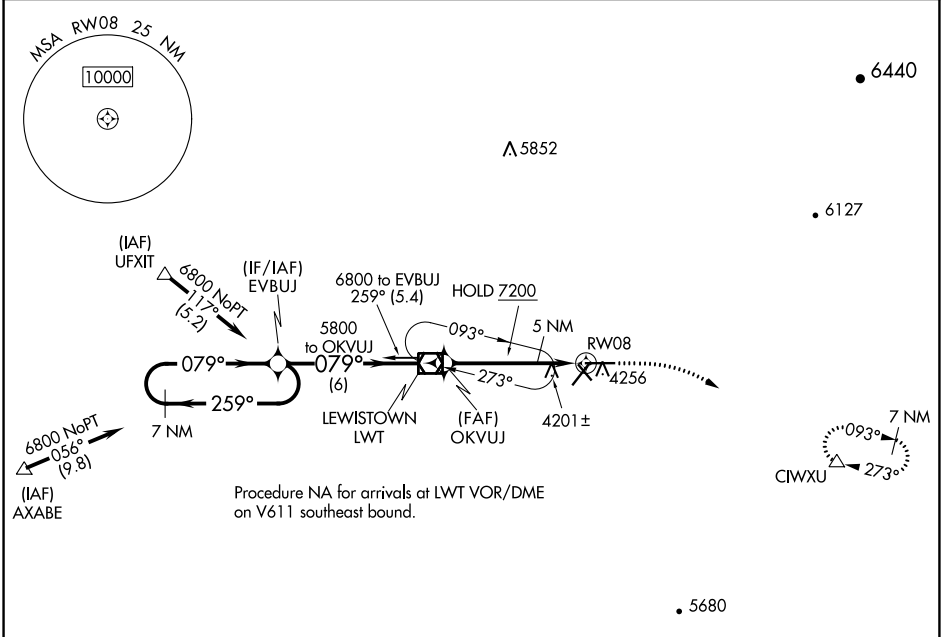
# RNAV (GPS) RWY 8

LEWISTOWN MUNI (LWT)

**⚠** For uncompensated Baro-VNAV systems, LNAV/VNAV NA below -26°C (-14°F) or above 50°C (123°F).  
DME/DME RNP-0.3 NA.

**MISSED APPROACH:** Climb to 4600, then climbing right turn to 7700 direct CIWXU and hold, continue climb-in-hold to 7700.

ASOS <b>118.375</b>	SALT LAKE CENTER <b>133.4 285.4</b>	UNICOM <b>123.0 (CTAF) 1</b>
------------------------	--	---------------------------------

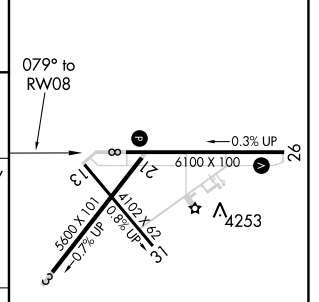
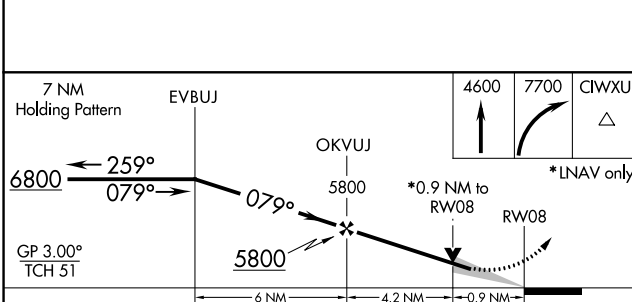


Procedure NA for arrivals at LWT VOR/DME on V611 southeast bound.

NW-1, 19 MAY 2022 to 16 JUN 2022

NW-1, 19 MAY 2022 to 16 JUN 2022

ELEV <b>4170</b>	<b>D</b> TDZE <b>4129</b>
------------------	---------------------------



CATEGORY	A	B	C	D
LPV DA		4379-3/4	250 (300-3/4)	
LNAV/VNAV DA		4419-7/8	290 (300-7/8)	
LNAV MDA		4460-1	331 (300-1)	
<b>C</b> CIRCLING	4680-1 510 (600-1)	4820-1 650 (700-1)	4980-2 1/4 810 (900-2 1/4)	5240-3 1070 (1100-3)

REIL Rwy 8 and 26 **1**  
MIRL Rwy 3-21  
MIRL 8-26 and 13-31 **1**