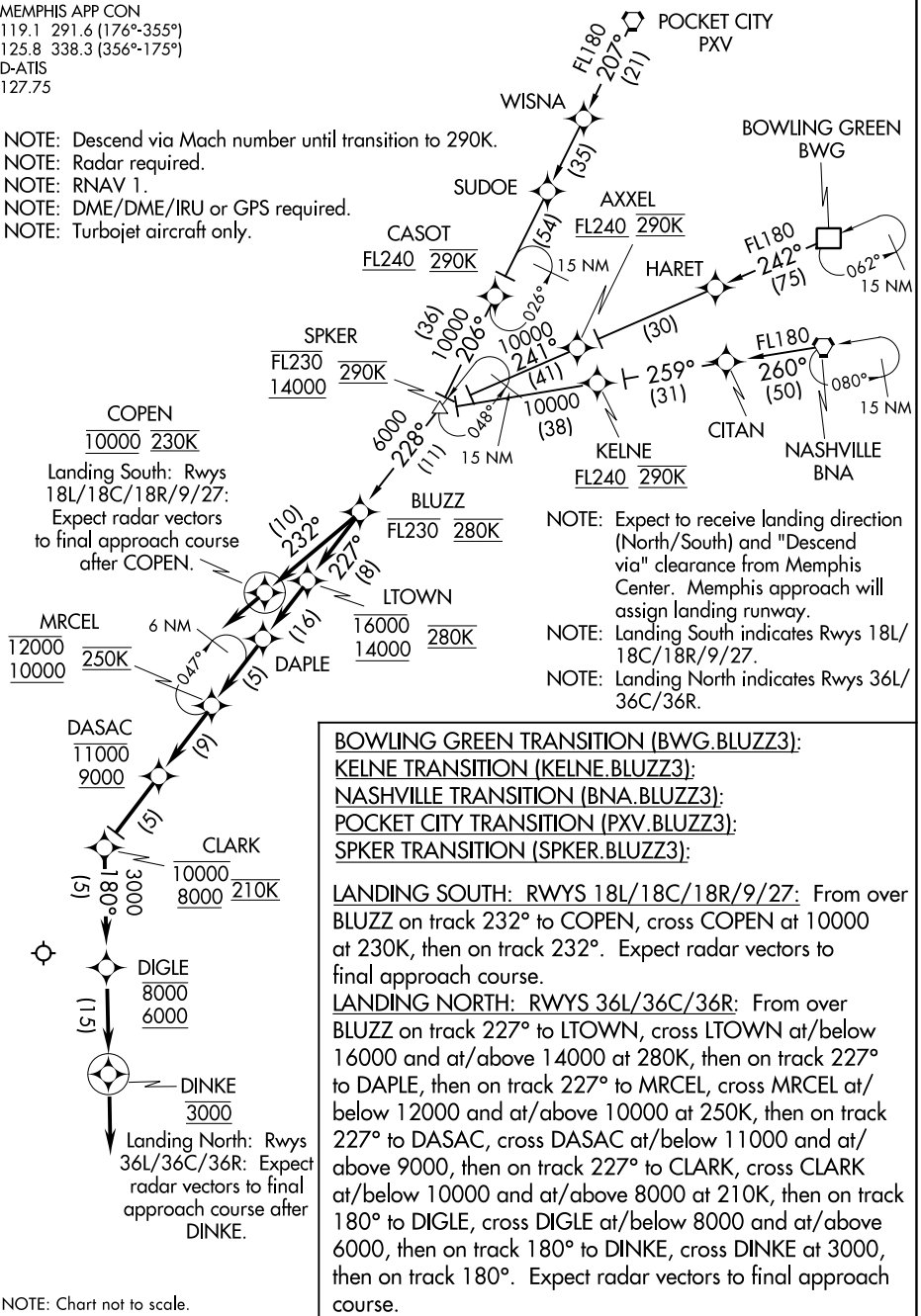


BLUZZ THREE ARRIVAL (RNAV)

MEMPHIS APP CON
119.1 291.6 (176°-355°)
125.8 338.3 (356°-175°)
D-ATIS
127.75

- NOTE: Descend via Mach number until transition to 290K.
- NOTE: Radar required.
- NOTE: RNAV 1.
- NOTE: DME/DME/IRU or GPS required.
- NOTE: Turbojet aircraft only.



- NOTE: Expect to receive landing direction (North/South) and "Descend via" clearance from Memphis Center. Memphis approach will assign landing runway.
- NOTE: Landing South indicates Rwy's 18L/18C/18R/9/27.
- NOTE: Landing North indicates Rwy's 36L/36C/36R.

- BOWLING GREEN TRANSITION (BWG.BLUZZ3):**
- KELNE TRANSITION (KELNE.BLUZZ3):**
- NASHVILLE TRANSITION (BNA.BLUZZ3):**
- POCKET CITY TRANSITION (PXV.BLUZZ3):**
- SPKER TRANSITION (SPKER.BLUZZ3):**

LANDING SOUTH: RWYS 18L/18C/18R/9/27: From over BLUZZ on track 232° to COPEN, cross COPEN at 10000 at 230K, then on track 232°. Expect radar vectors to final approach course.

LANDING NORTH: RWYS 36L/36C/36R: From over BLUZZ on track 227° to LTOWN, cross LTOWN at/below 16000 and at/above 14000 at 280K, then on track 227° to DAPLE, then on track 227° to MRCEL, cross MRCEL at/below 12000 and at/above 10000 at 250K, then on track 227° to DASAC, cross DASAC at/below 11000 and at/above 9000, then on track 227° to CLARK, cross CLARK at/below 10000 and at/above 8000 at 210K, then on track 180° to DIGLE, cross DIGLE at/below 8000 and at/above 6000, then on track 180° to DINKE, cross DINKE at 3000, then on track 180°. Expect radar vectors to final approach course.

NOTE: Chart not to scale.

SE-1, 19 MAY 2022 to 16 JUN 2022

SE-1, 19 MAY 2022 to 16 JUN 2022