

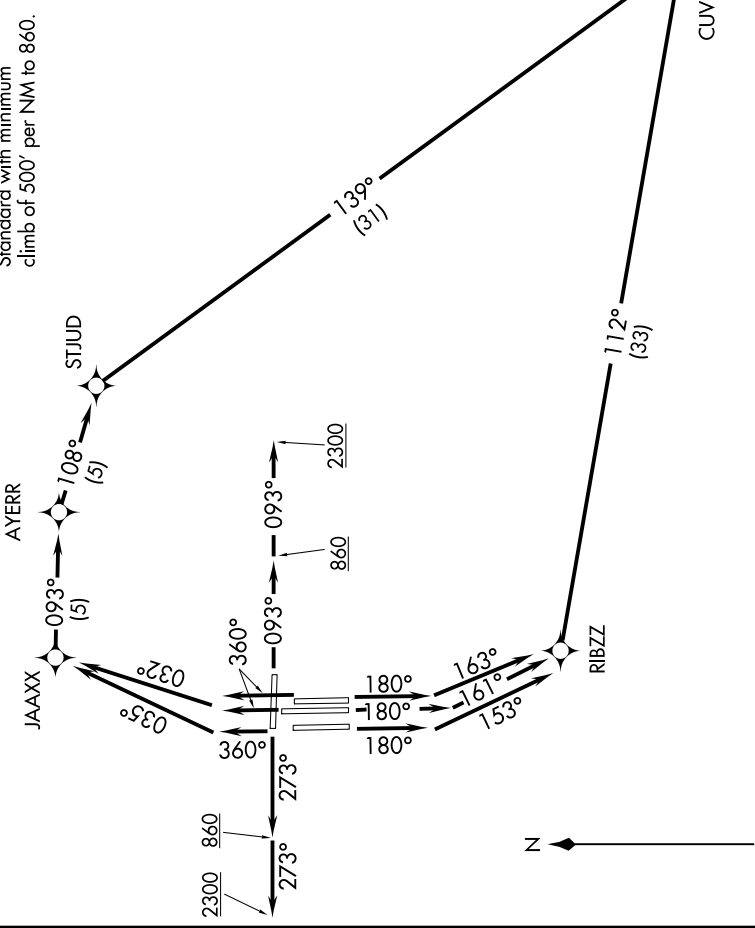
GMBUD SEVEN DEPARTURE (RNAV)

D-ATIS 127.75
 CLNC DEL 125.2
 CPD/C 124.15
 GND CON 124.15
 121.0 379.2 (Rwy 9-27)
 121.9 379.2 (Rwys 18C-36C, 18L-36R)
 121.65 379.2 (Rwy 18R-36L)
 MEMPHIS TOWER 118.3 257.8 (Rwy 9-27)
 119.7 257.8 (Rwys 18C-36C, 18L-36R)
 128.425 257.8 (Rwy 18R-36L)
 MEMPHIS DEP CON 124.15 385.45

- NOTE: DME/DME/IRU or GPS required.
- NOTE: RNAV 1.
- NOTE: Turbojets only.
- NOTE: Takeoff Rwy 18L/C/R, 36L/C/R - RADAR required for non-GPS equipped aircraft.
- NOTE: Takeoff Rwy 9, 27 - RADAR required.
- NOTE: Transponder code will be issued via PDC or Memphis clearance delivery.
- NOTE: Procedure authorized 0200-0600 local only.
- NOTE: Accelerate to 250K, reaching 10000 MSL, maintain 250K or greater, if unable advise ATC.
- NOTE: If unable to accept climb rates, advise ATC on initial contact.

SE-1, 19 MAY 2022 to 16 JUN 2022

**TOP ALTITUDE:
5000**



(NARRATIVE ON FOLLOWING PAGE)

NOTE: Chart not to scale.

SE-1, 19 MAY 2022 to 16 JUN 2022

GMBUD SEVEN DEPARTURE (RNAV)