

GRRIZ FIVE DEPARTURE (RNAV)

**TOP ALTITUDE:
5000**

D-ATIS
127.75
CLNC DEL
125.2
CPDLC
GND CON
121.0 379.2 (Rwy 9-27)
121.9 379.2 (Rwys 18C-36C, 18L-36R)
121.65 379.2 (Rwy 18R-36L)
MEMPHIS TOWER
118.3 257.8 (Rwy 9-27)
119.7 257.8 (Rwys 18C-36C, 18L-36R)
128.425 257.8 (Rwy 18R-36L)
MEMPHIS DEP CON
124.65 284.7

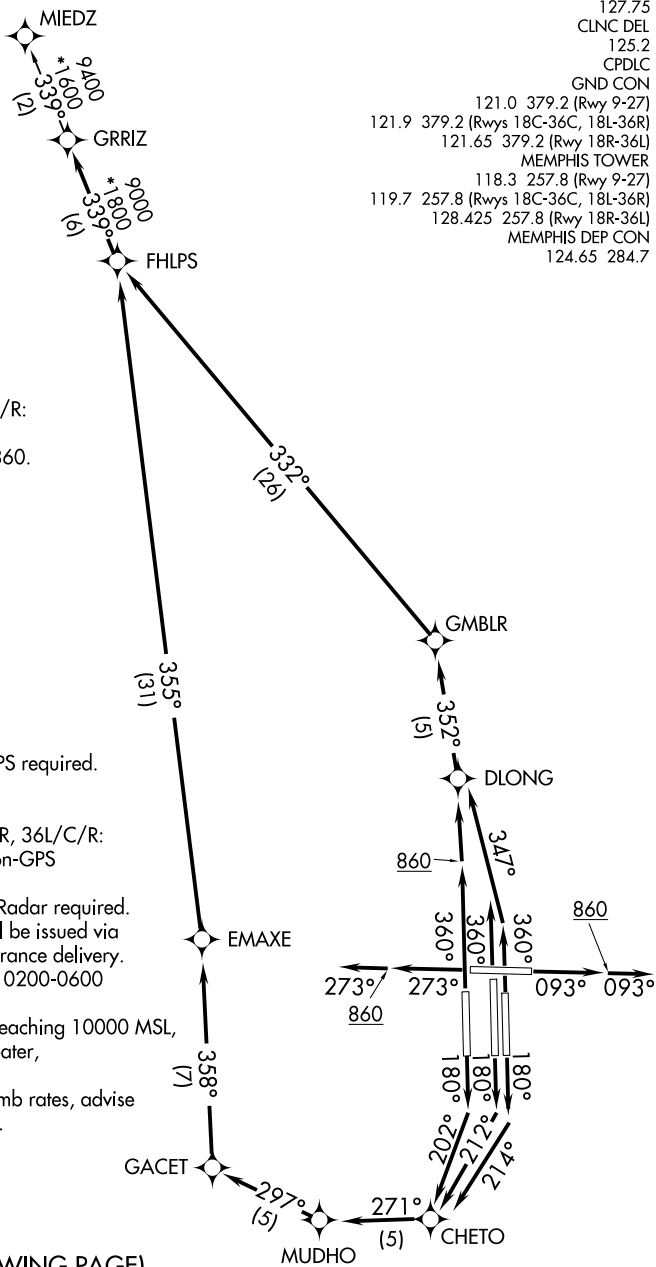
TAKEOFF MINIMUMS:

Rwys 9, 18L/C/R, 27, 36L/C/R:
Standard with minimum
climb of 500' per NM to 860.

- NOTE: DME/DME/IRU or GPS required.
- NOTE: RNAV 1.
- NOTE: Turbojets only.
- NOTE: Takeoff Rwys 18L/C/R, 36L/C/R:
Radar required for non-GPS
equipped aircraft.
- NOTE: Takeoff Rwys 9, 27: Radar required.
- NOTE: Transponder code will be issued via
PDC or Memphis clearance delivery.
- NOTE: Procedure authorized 0200-0600
local only.
- NOTE: Accelerate to 250K, reaching 10000 MSL,
maintain 250K or greater,
if unable advise ATC.
- NOTE: If unable to accept climb rates, advise
ATC on initial contact.

(NARRATIVE ON FOLLOWING PAGE)

NOTE: Chart not to scale.



SE-1, 19 MAY 2022 to 16 JUN 2022

SE-1, 19 MAY 2022 to 16 JUN 2022

GRRIZ FIVE DEPARTURE (RNAV)