

LOC I-JIM <b>108.7</b>	APP CRS <b>273°</b>	Rwy Idg TDZE Apt Elev <b>8946</b> <b>292</b> <b>341</b>
---------------------------	------------------------	--

# ILS or LOC RWY 27

MEMPHIS INTL (MEM)

**▼** For inop ALS, increase S-ILS Cat E visibility to RVR 4000, and S-LOC Cat E visibility to 2 SM, IPEPE fix minimums S-LOC Cat E visibility to 1½ SM.  
**\*\*RVR 1800 authorized with use of FD or AP or HUD to DA.**

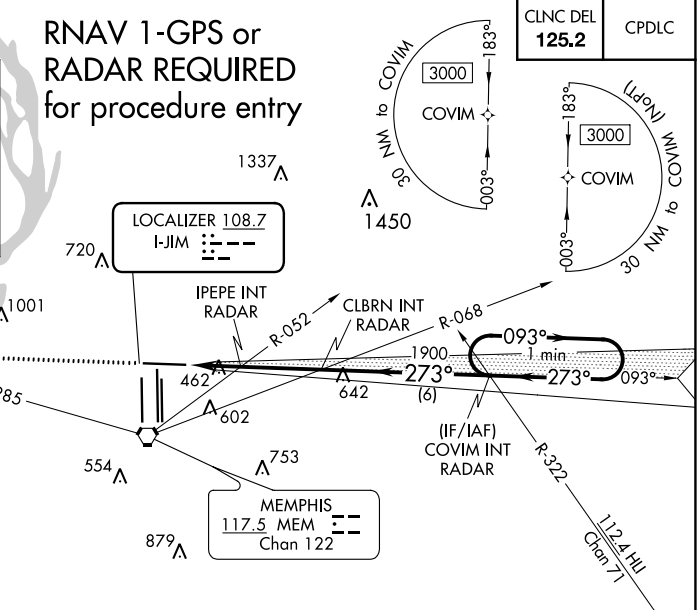
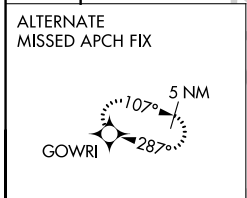
**MALS/R** MISSED APPROACH: Climb 5000 and intercept MEM VORTAC R-285 to GOWRI INT/17 DME and hold, continue climb-in-hold to 5000.

MEMPHIS APP CON <b>119.1 291.6</b> (176°-355°) <b>125.8 338.3</b> (356°-175°)	MEMPHIS TOWER (Rwy 9-27) <b>118.3 257.8</b> (Rwys 18C-36C, 18L-36R) <b>119.7 257.8</b> (Rwy 18R-36L) <b>128.425 257.8</b>	GND CON (Rwy 9-27) <b>121.0 379.2</b> (Rwys 18C-36C, 18L-36R) <b>121.9 379.2</b> (Rwy 18R-36L) <b>121.65 379.2</b>
---	--	---

D-ATIS  
**127.75**

CLNC DEL **125.2** CPDLC

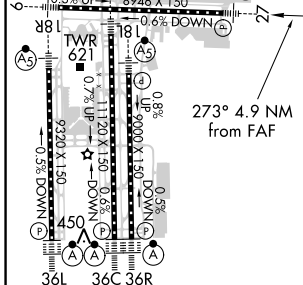
## RNAV 1-GPS or RADAR REQUIRED for procedure entry



SE-1, 19 MAY 2022 to 16 JUN 2022

SE-1, 19 MAY 2022 to 16 JUN 2022

ELEV <b>341</b> <b>D</b> TDZE <b>292</b>	5000	MEM R-285	GOWRI INT	CLBRN INT RADAR	COVIM INT RADAR	One Minute Holding Pattern
*LOC only.				1900	1900	093° → 3000
VGSI and ILS glidepath not coincident (VGSI Angle 3.00/TCH 69).				GS 3.00° TCH 54		



HIRL all Rwys  
 TDZ/CL Rwys 18L, 18C, 18R, 36R, 36C, and 36L

FAF to MAP 4.9 NM

Knots	60	90	120	150	180
Min:Sec	4:54	3:16	2:27	1:58	1:38

CATEGORY	A	B	C	D	E
S-ILS 27 **	492/24 200 (200-½)				
S-LOC 27	980/24	688 (700-½)	980-1½ 688 (700-1½)		
<b>C</b> CIRCLING	980-1	639 (700-1)	980-2	1020-2¼	1140-2¾
IPEPE FIX MINIMUMS (DUAL VOR RECEIVERS OR RADAR REQUIRED)					
S-LOC 27	720/24	428 (400-½)	720/40 428 (400-¾)		
<b>C</b> CIRCLING	940-1	599 (600-1)	940-1½	1020-2¼	1140-2¾