

LOC/DME I-MYO 111.35 Chan 50 (Y)	APP CRS 360°	Rwy Idg TDZE 335 Apt Elev 341
---	------------------------	---

ILS or LOC RWY 36R

MEMPHIS INTL (MEM)

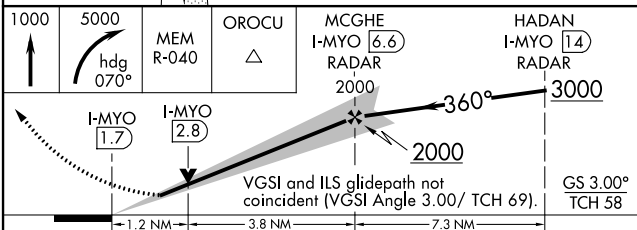
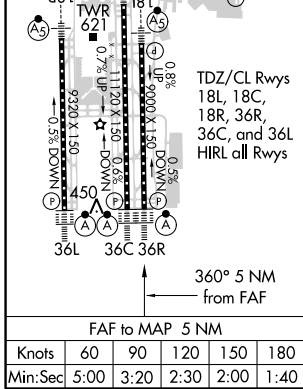
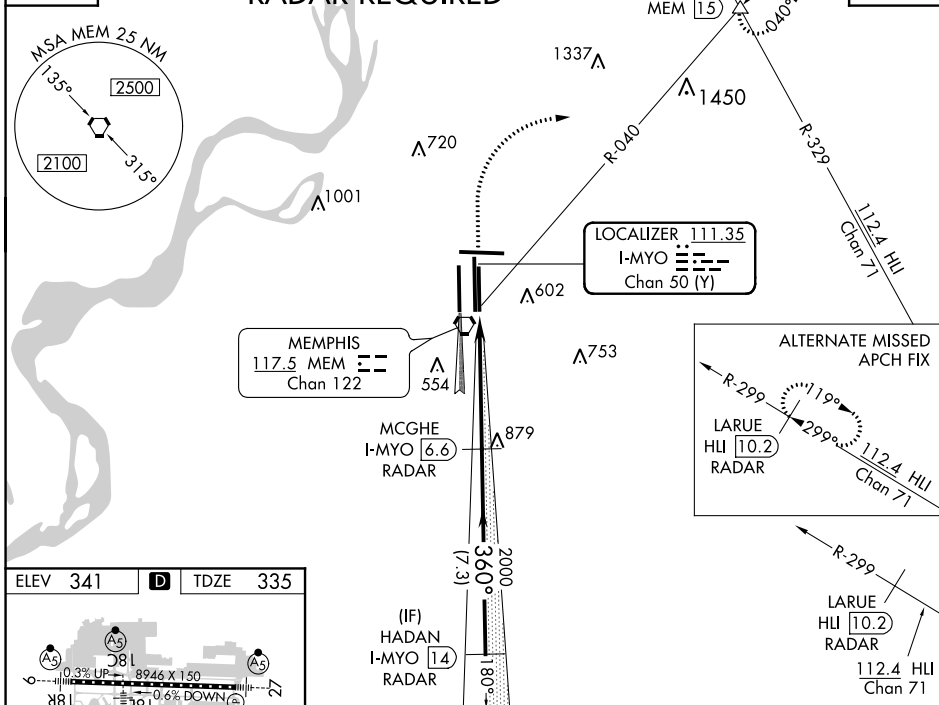
⚠ For inoperative ALSF, increase S-ILS 36R Cat E visibility to RVR 4000 and S-LOC 36R Cat E visibility to 1½. Simultaneous approach authorized with Rwy 36L. DME or RADAR required.

ALSF-2 MISSED APPROACH: Climb to 1000 then climbing right turn to 5000 via heading 070° and MEM VORTAC R-040 to OROCU INT/MEM VORTAC 1.5 DME and hold, continue climb-in-hold to 5000.

MEMPHIS APP CON 119.1 291.6 (176°-355°) 125.8 338.3 (356°-175°)	MEMPHIS TOWER (Rwy 9-27) 118.3 257.8 (Rwys 18C-36C, 18L-36R) 119.7 257.8 (Rwy 18R-36L) 128.425 257.8	GND CON (Rwy 9-27) 121.0 379.2 (Rwys 18C-36C, 18L-36R) 121.9 379.2 (Rwy 18R-36L) 121.65 379.2	CLNC DEL 125.2
---	--	---	--------------------------

D-ATIS
127.75

RADAR REQUIRED



1000	5000	MEM R-040	OROCU	MCGHE I-MYO (6.6) RADAR 2000	HADAN I-MYO (14) RADAR 3000
(IF) HADAN I-MYO (14) RADAR MCGHE I-MYO (6.6) RADAR OROCU MEM (15) MEM R-040 I-MYO (1.7) 360° I-MYO (2.8) 2000 VGSi and ILS glidepath not coincident (VGSi Angle 3.00° TCH 69°). GS 3.00° TCH 58 1.2 NM 3.8 NM 7.3 NM					
CATEGORY	A	B	C	D	E
S-ILS 36R	535/18 200 (200-½)			535/24 200 (200-½)	
S-LOC 36R	760/24	425 (500-½)	760/40	425 (500-¾)	760/50 425 (500-1)
CIRCLING	940-1 599 (600-1)		940-1½ 599 (600-1½)	1020-2¼ 679 (700-2¼)	1140-2¾ 799 (800-2¾)

SE-1, 19 MAY 2022 to 16 JUN 2022

SE-1, 19 MAY 2022 to 16 JUN 2022