

SE-1, 19 MAY 2022 to 16 JUN 2022

**ARRIVAL ROUTE DESCRIPTION**

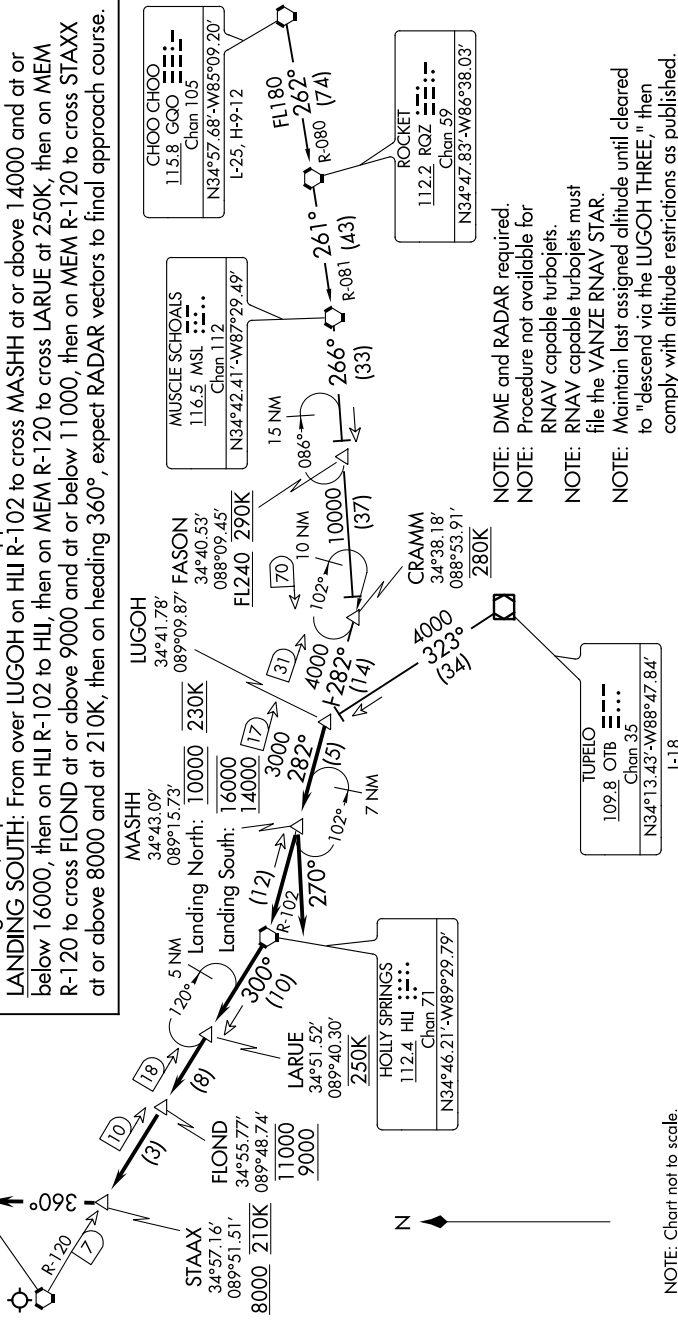
**CHOO CHOO TRANSITION (GOO.LUGOH3):** From over GOO VORTAC on GOO R-262 and RQZ R-080 to RQZ VORTAC, then on RQZ R-261 and MSL R-081 to MSL VORTAC, then on MSL R-266 to CRAMM, then on HLI R-102 to LUGOH, thence....  
**TUPELO TRANSITION (OTB.LUGOH3):** From over OTB VOR/DME on OTB R-323 to LUGOH, thence....

**LANDING NORTH:** From over LUGOH on HLI R-102 to cross MASHH at 10000 and 230K, then on heading 270°, expect RADAR vectors to final approach course.

**LANDING SOUTH:** From over LUGOH on HLI R-102 to cross MASHH at or above 14000 and at or below 16000, then on HLI R-102 to HLI, then on MEM R-120 to cross LARUE at 250K, then on MEM R-120 to cross FLOUND at or above 9000 and at or below 11000, then on MEM R-120 to cross STAXX at or above 8000 and at 210K, then on heading 360°, expect RADAR vectors to final approach course.

MEMPHIS APP CON  
 119.1 291.6 (176°-355°)  
 125.8 338.3 (356°-175°)  
 D-ATIS  
 127.75

MEMPHIS  
 117.5 MEM  
 Chan 122



- NOTE: DME and RADAR required.
- NOTE: Procedure not available for RNAV capable turbojets.
- NOTE: RNAV capable turbojets must file the VANZE RNAV STAR.
- NOTE: Maintain last assigned altitude until cleared to "descend via the LUGOH THREE," then comply with altitude restrictions as published.

NOTE: Chart not to scale.

SE-1, 19 MAY 2022 to 16 JUN 2022