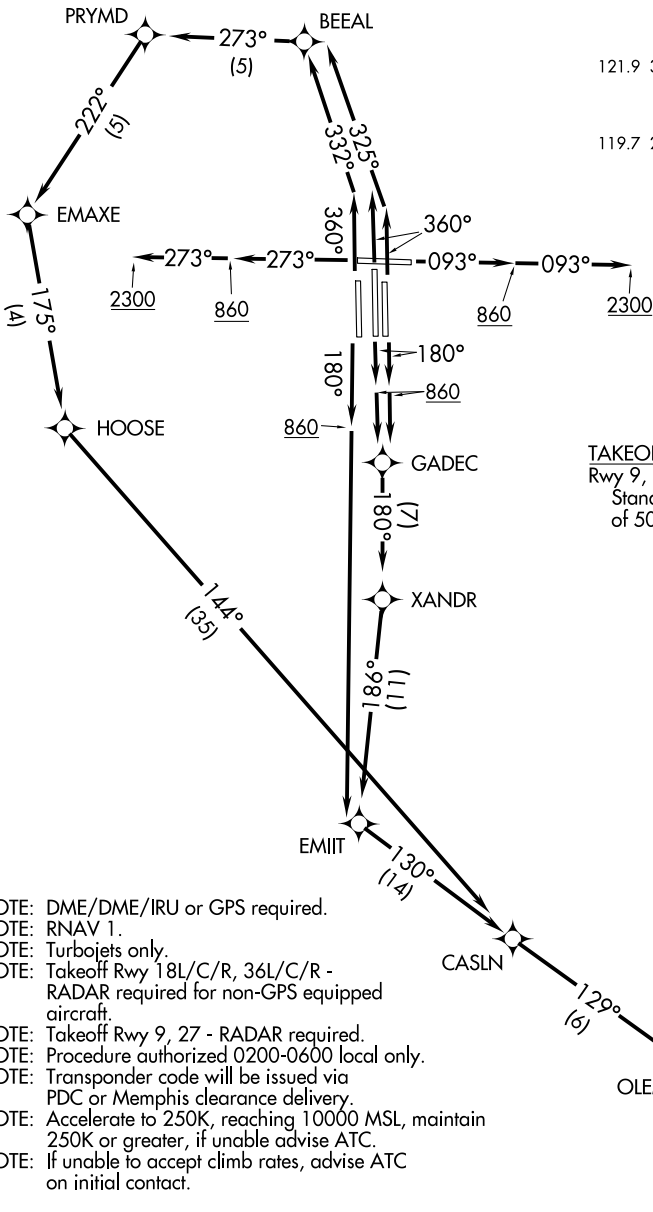


# OLEMS SIX DEPARTURE (RNAV)

MEMPHIS, TENNESSEE

**TOP ALTITUDE:  
5000**

- D-ATIS 127.75
- CLNC DEL 125.2
- CPDLC 125.2
- GND CON 121.0 379.2 (Rwy 9-27)
- 121.9 379.2 (Rwys 18C-36C, 18L-36R)
- 121.65 379.2 (Rwy 18R-36L)
- MEMPHIS TOWER 118.3 257.8 (Rwy 9-27)
- 119.7 257.8 (Rwys 18C-36C, 18L-36R)
- 128.425 257.8 (Rwy 18R-36L)
- MEMPHIS DEP CON 124.65 284.7



**TAKEOFF MINIMUMS:**  
 Rwy 9, 18L/C/R, 27, 36L/C/R:  
 Standard with minimum climb  
 of 500' per NM to 860.

- NOTE: DME/DME/IRU or GPS required.
- NOTE: RNAV 1.
- NOTE: Turbojets only.
- NOTE: Takeoff Rwy 18L/C/R, 36L/C/R - RADAR required for non-GPS equipped aircraft.
- NOTE: Takeoff Rwy 9, 27 - RADAR required.
- NOTE: Procedure authorized 0200-0600 local only.
- NOTE: Transponder code will be issued via PDC or Memphis clearance delivery.
- NOTE: Accelerate to 250K, reaching 10000 MSL, maintain 250K or greater, if unable advise ATC.
- NOTE: If unable to accept climb rates, advise ATC on initial contact.

(NARRATIVE ON FOLLOWING PAGE)

NOTE: Chart not to scale.

# OLEMS SIX DEPARTURE (RNAV)

SE-1, 19 MAY 2022 to 16 JUN 2022

SE-1, 19 MAY 2022 to 16 JUN 2022