

WAAS CH 40407 W36B	APP CRS 360°	Rwy Idg TDZE 341 Apt Elev 341	10715
--	------------------------	---	--------------

RNAV (GPS) RWY 36C

MEMPHIS INTL (MEM)

RNP APCH.

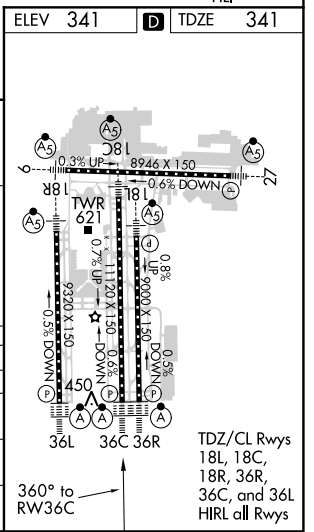
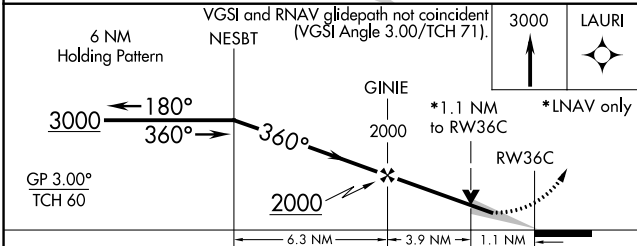
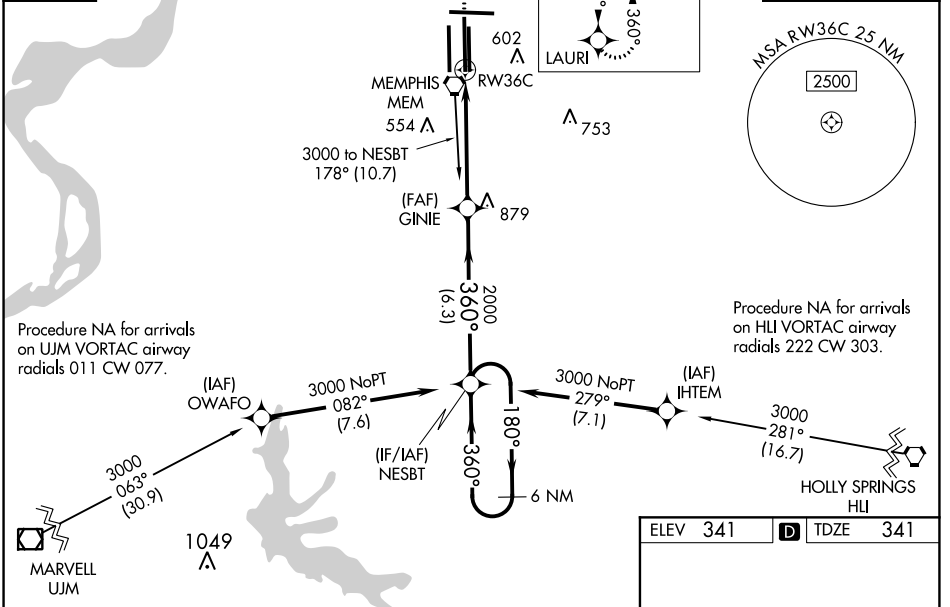
⚠ For uncompensated Baro-VNAV systems, LNAV/VNAV NA below -15°C or above 54°C. Simultaneous approach authorized. For inop ALS increase LPV all Cats visibility to RVR 5000, increase LNAV Cat D visibility to RVR 6000. LNAV procedure NA during simultaneous operations. Use of FD or AP required during simultaneous operations.

ALS-F-2

MISSED APPROACH:
Climb to 3000 direct LAURI and hold.

MEMPHIS APP CON 119.1 291.6 (176°-355°) 125.8 338.3 (356°-175°)	MEMPHIS TOWER (Rwy 9-27) 118.3 257.8 (Rwys 18C-36C, 18L-36R) 119.7 257.8 (Rwy 18R-36L) 128.425 257.8	GND CON (Rwy 9-27) 121.0 379.2 (Rwys 18C-36C, 18L-36R) 121.9 379.2 (Rwy 18R-36L) 121.65 379.2
---	--	---

D-ATIS 127.75	MISSED APCH FIX LAURI 4 NM 180° 360°	CLNC DEL 125.2	CPDLC
-------------------------	--	--------------------------	-------



CATEGORY	A	B	C	D
LPV DA		665/24	324 (400-½)	
LNAV/VNAV DA		765/50	424 (500-1)	
LNAV MDA	760/24	419 (500-½)	760/40 419 (500-¾)	760/50 419 (500-1)
CIRCLING	940-1	599 (600-1)	940-1½ 599 (600-1½)	1020-2¼ 679 (700-2¼)

SE-1, 19 MAY 2022 to 16 JUN 2022

SE-1, 19 MAY 2022 to 16 JUN 2022