


# RNAV (RNP) X RWY 18R

MEMPHIS INTL (MEM)

APP CRS	Rwy Idg	<b>9320</b>
<b>180°</b>	TDZE	<b>295</b>
	Apt Elev	<b>341</b>

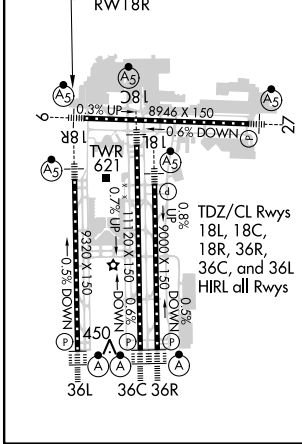
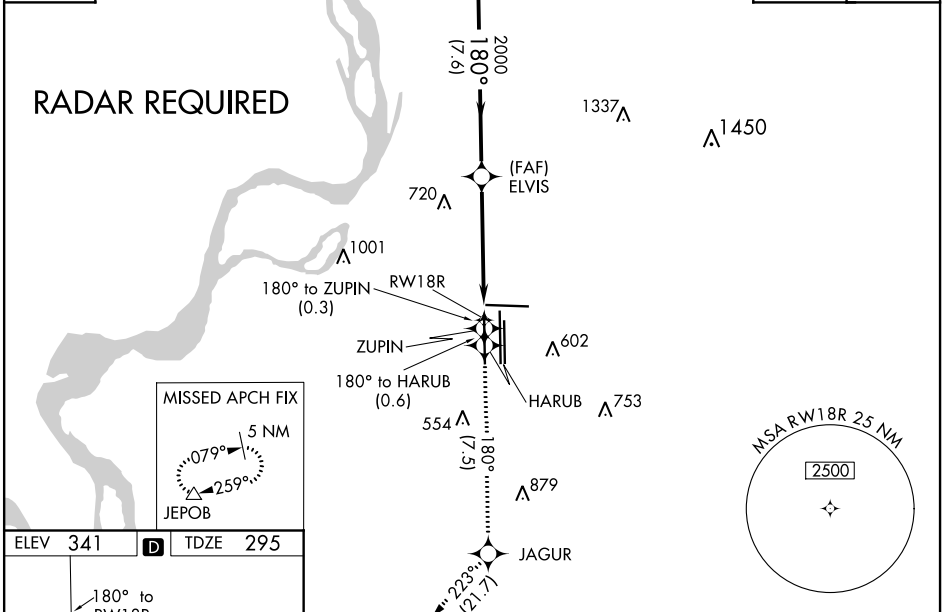
**▼** For uncompensated Baro-VNAV systems, procedure NA below -9°C (16°F) or above 48°C (118°F). Simultaneous approach authorized. GPS required. Missed approach requires RNP less than 1.0. Use of FD or AP required during simultaneous operations.

**MALSR**  
  
**MISSED APPROACH:** Climb to 5000 on track 180° to ZUPIN and on track 180° to HARUB and on track 180° to JAGUR and on track 223° to JEPOB and hold.

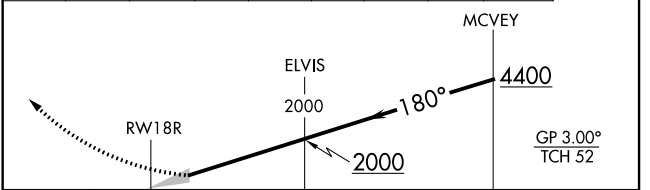
MEMPHIS APP CON	MEMPHIS TOWER	GND CON
<b>119.1 291.6</b> (176°-355°)	<b>118.3 257.8</b> (Rwy 9-27)	<b>121.0 379.2</b> (Rwy 9-27)
<b>125.8 338.3</b> (356°-175°)	<b>119.7 257.8</b> (Rwys 18C-36C, 18L-36R)	<b>121.9 379.2</b> (Rwys 18C-36C, 18L-36R)
	<b>128.425 257.8</b> (Rwy 18R-36L)	<b>121.65 379.2</b> (Rwy 18R-36L)

D-ATIS	<b>127.75</b>
--------	---------------

CLNC DEL	<b>125.2</b>	CPDLC
----------	--------------	-------



5000	↑	tr 180°	ZUPIN	tr 180°	HARUB	tr 180°	JAGUR	tr 223°	JEPOB
------	---	---------	-------	---------	-------	---------	-------	---------	-------



CATEGORY	A	B	C	D
RNP 0.14 DA	737/45 442 (400-7/8)			

**AUTHORIZATION REQUIRED**

SE-1, 19 MAY 2022 to 16 JUN 2022

SE-1, 19 MAY 2022 to 16 JUN 2022