


# RNAV (RNP) Y RWY 18C

MEMPHIS INTL (MEM)

APP CRS	Rwy Idg	<b>11120</b>
<b>180°</b>	TDZE	<b>290</b>
	Apt Elev	<b>341</b>

**▽** For uncompensated Baro-VNAV systems, procedure NA below -10°C (14°F) or above 54°C (130°F). GPS required. For inop ALS, increase RNP 0.30\* all Cats visibility to 1½ SM and RNP 0.30 all Cats visibility to 1½ SM. Simultaneous approach authorized. Use of FD or AP required during simultaneous operations.

**MALSR**  
  
**MISSED APPROACH:** Climb to 5000 on track 180° to CEDEN on track 137° to KEEZE and hold, continue climb-in-hold to 5000. \*Missed approach requires a minimum climb of 400 feet per NM to 1000.

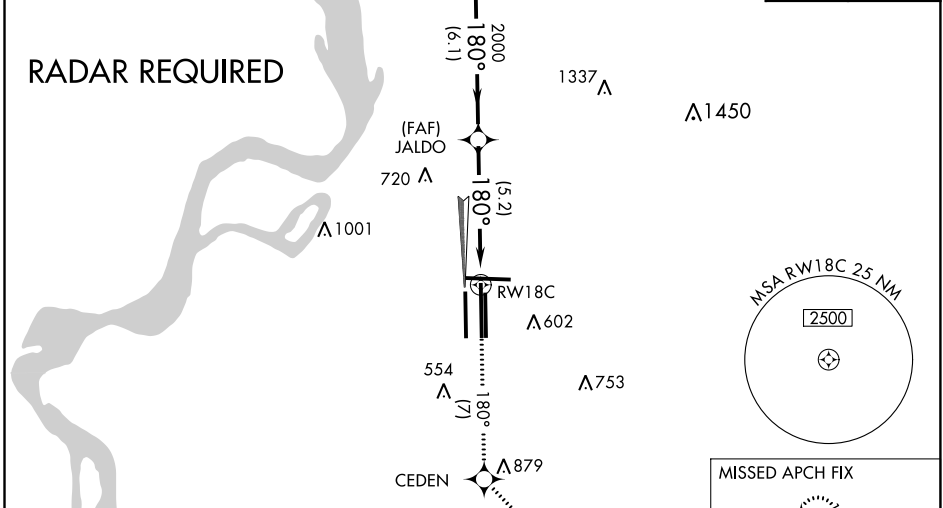
MEMPHIS APP CON	
<b>119.1 291.6</b>	(176°-355°)
<b>125.8 338.3</b>	(356°-175°)

MEMPHIS TOWER	
(Rwy 9-27)	<b>118.3 257.8</b>
(Rwys 18C-36C, 18L-36R)	<b>119.7 257.8</b>
(Rwy 18R-36L)	<b>128.425 257.8</b>

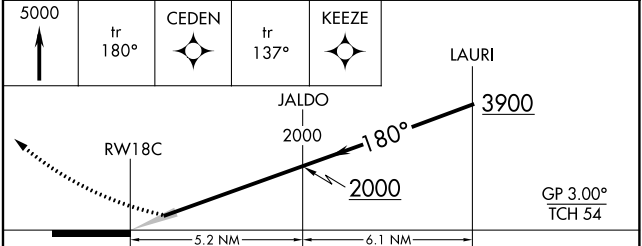
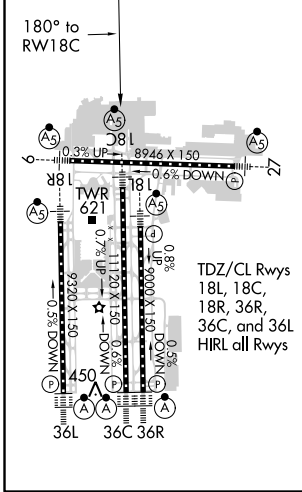
GND CON	
(Rwy 9-27)	<b>121.0 379.2</b>
(Rwys 18C-36C, 18L-36R)	<b>121.9 379.2</b>
(Rwy 18R-36L)	<b>121.65 379.2</b>

D-ATIS
<b>127.75</b>

CLNC DEL	CPDLC
<b>125.2</b>	



ELEV 341	<b>D</b>	TDZE 290
----------	----------	----------



CATEGORY	A	B	C	D
RNP 0.30 DA*	655/35 365 (400-%)			
RNP 0.30 DA	747/54 457 (500-1)			

## AUTHORIZATION REQUIRED

SE-1, 19 MAY 2022 to 16 JUN 2022

SE-1, 19 MAY 2022 to 16 JUN 2022