


APP CRS	Rwy Idg	9000
180°	TDZE	301
	Apt Elev	341

RNAV (RNP) Y RWY 18L

MEMPHIS INTL (MEM)

▽ For uncompensated Baro-VNAV systems, procedure NA below -9°C (16°F) or above 48°C (118 °F). GPS required. Simultaneous approach authorized. For inop ALS, increase RNP 0.30 * all Cats visibility to RVR 6000 and RNP 0.30 all Cats visibility to 1¼ SM.

MALSR

MISSED APPROACH: Climb to 5000 on track 180° to PENLE and on track 136° to KEEZE and hold, continue climb-in-hold to 5000. *Missed approach requires minimum climb of 400 feet per NM to 1000.

MEMPHIS APP CON

119.1 291.6	(176°-355°)
125.8 338.3	(356°-175°)

MEMPHIS TOWER

(Rwy 9-27)	118.3 257.8
(Rwys 18C-36C, 18L-36R)	119.7 257.8
(Rwy 18R-36L)	128.425 257.8

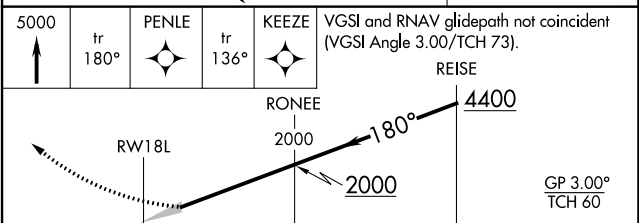
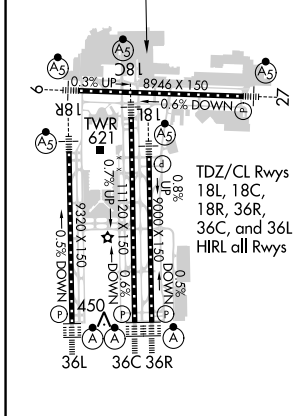
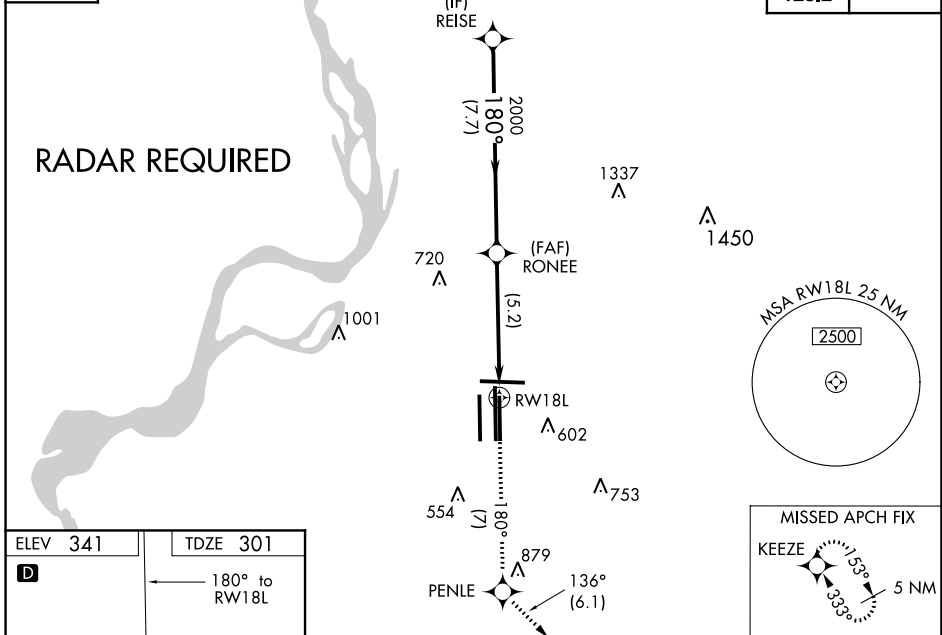
GND CON

(Rwy 9-27)	121.0 379.2
(Rwys 18C-36C, 18L-36R)	121.9 379.2
(Rwy 18R-36L)	121.65 379.2

D-ATIS

127.75

CLNC DEL	CPDLC
125.2	



CATEGORY	A	B	C	D
RNP 0.30 DA*		698/50	397 (400-1)	
RNP 0.30 DA		791/60	490 (500-1¼)	

AUTHORIZATION REQUIRED

SE-1, 19 MAY 2022 to 16 JUN 2022

SE-1, 19 MAY 2022 to 16 JUN 2022