

WAAS CH <b>97507</b>	APP CRS <b>180°</b>	Rwy Idg TDZE Apt Elev	<b>1120</b> <b>290</b> <b>341</b>
-------------------------	------------------------	-----------------------------	---

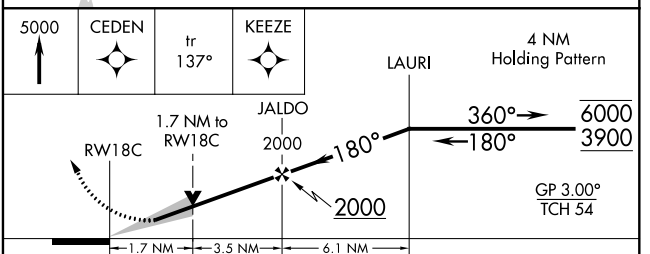
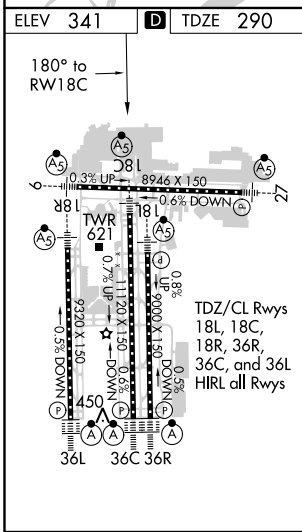
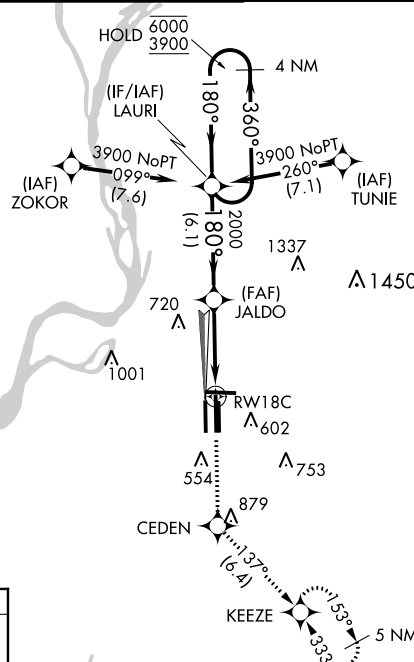
# RNAV (GPS) Z RWY 18C

MEMPHIS INTL (MEM)

RNP APCH - GPS.		MEMPHIS TOWER		GND CON		CLNC DEL
Simultaneous approach authorized. For uncompensated Baro-VNAV systems, LNAV/VNAV NA below -15°C or above 54°C. Use of FD or AP required during simultaneous operations. LNAV procedure NA during simultaneous operations. For Inop ALS, increase LPV all Cats visibility to RVR 5500 and LNAV/VNAV all Cats visibility to 1 3/8 SM.		(Rwy 9-27)	<b>118.3 257.8</b>	(Rwy 9-27)	<b>121.0 379.2</b>	
		(Rwys 18C-36C, 18L-36R)	<b>119.7 257.8</b>	(Rwys 18C-36C, 18L-36R)	<b>121.9 379.2</b>	
		(Rwy 18R-36L)	<b>128.425 257.8</b>	(Rwy 18R-36L)	<b>121.65 379.2</b>	<b>125.2</b>

D-ATIS  
**127.75**

CPDLC



CATEGORY	A	B	C	D
LPV DA	665/35 375 (400-5%)			
LNAV/VNAV DA	782/50 492 (500-1)			
LNAV MDA	880/24	590 (600-1/2)	880-1 1/4	590 (600-1 1/4)
<b>C</b> CIRCLING	940-1	599 (600-1)	940-1 3/4	1020-2 1/4 679 (700-2 1/4)

SE-1, 19 MAY 2022 to 16 JUN 2022

SE-1, 19 MAY 2022 to 16 JUN 2022