

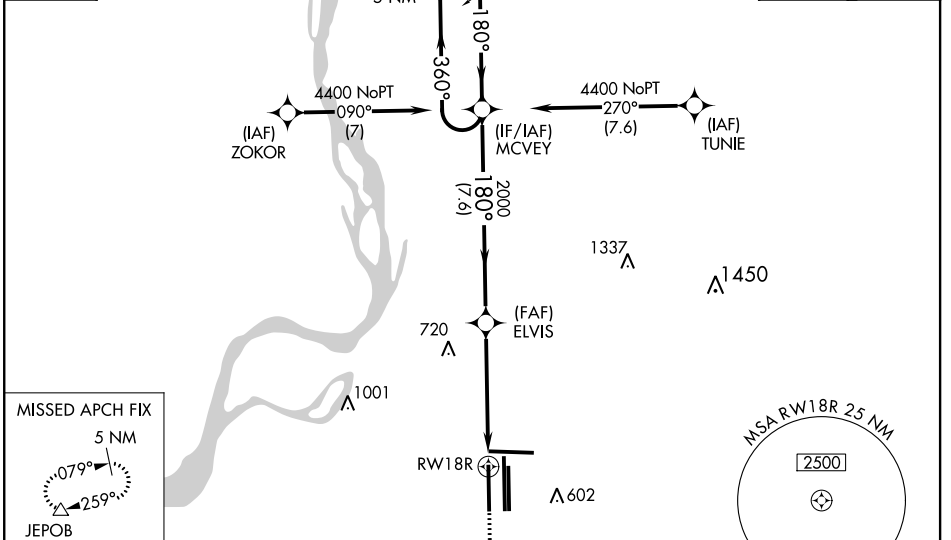
WAAS CH <b>56606</b> <b>W18A</b>	APP CRS <b>180°</b>	Rwy Idg TDZE Apt Elev	<b>9320</b> <b>295</b> <b>341</b>
--	------------------------	-----------------------------	---

# RNAV (GPS) Z RWY 18R

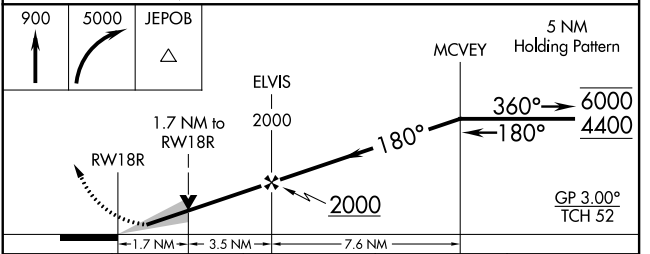
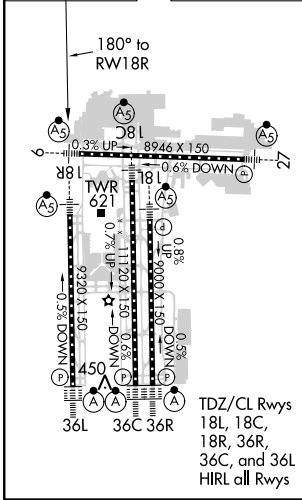
MEMPHIS INTL (MEM)

RNP APCH - GPS.		MALSR	MISSED APPROACH: Climb to 900 then climbing right turn to 5000 direct JEPOB and hold.
<p>Simultaneous approach authorized. For uncompensated Baro-VNAV systems, LNAV/VNAV NA below -1.5°C or above 54°C. LNAV procedure NA during simultaneous operations. Use of FD or AP required during simultaneous operations. For inop ALS, increase LNAV/VNAV all Cats visibility to 1 3/8 SM.</p>			
MEMPHIS APP CON		MEMPHIS TOWER	GND CON
<b>119.1 291.6</b> (176°-355°)	(Rwy 9-27) <b>118.3 257.8</b>	(Rwy 9-27) <b>119.7 257.8</b>	(Rwy 9-27) <b>121.0 379.2</b>
<b>125.8 338.3</b> (356°-175°)	(Rwys 18C-36C, 18L-36R) <b>119.7 257.8</b>	(Rwys 18C-36C, 18L-36R) <b>121.9 379.2</b>	(Rwys 18C-36C, 18L-36R) <b>121.9 379.2</b>
	(Rwy 18R-36L) <b>128.425 257.8</b>	(Rwy 18R-36L) <b>121.65 379.2</b>	(Rwy 18R-36L) <b>121.65 379.2</b>

D-ATIS <b>127.75</b>	CLNC DEL <b>125.2</b>	CPDLC
-------------------------	--------------------------	-------



ELEV <b>341</b>	<b>D</b>	TDZE <b>295</b>
-----------------	----------	-----------------



CATEGORY	A	B	C	D
LPV DA		495/18	200 (200-1/2)	
LNAV/VNAV DA		874-1 1/4	579 (600-1 1/4)	
LNAV MDA	880/24	585 (600-1/2)	880-1 1/4	585 (600-1 1/4)
<input checked="" type="checkbox"/> CIRCLING	940-1	599 (600-1)	940-1 3/4 599 (600-1 3/4)	1020-2 1/4 679 (700-2 1/4)

SE-1, 19 MAY 2022 to 16 JUN 2022

SE-1, 19 MAY 2022 to 16 JUN 2022