

LOC/DME I-RUJ 108.5 Chan 22	APP CRS 320°	Rwy Idg 9618 TDZE 25 Apt Elev 26
---	------------------------	---

ILS or LOC RWY 32

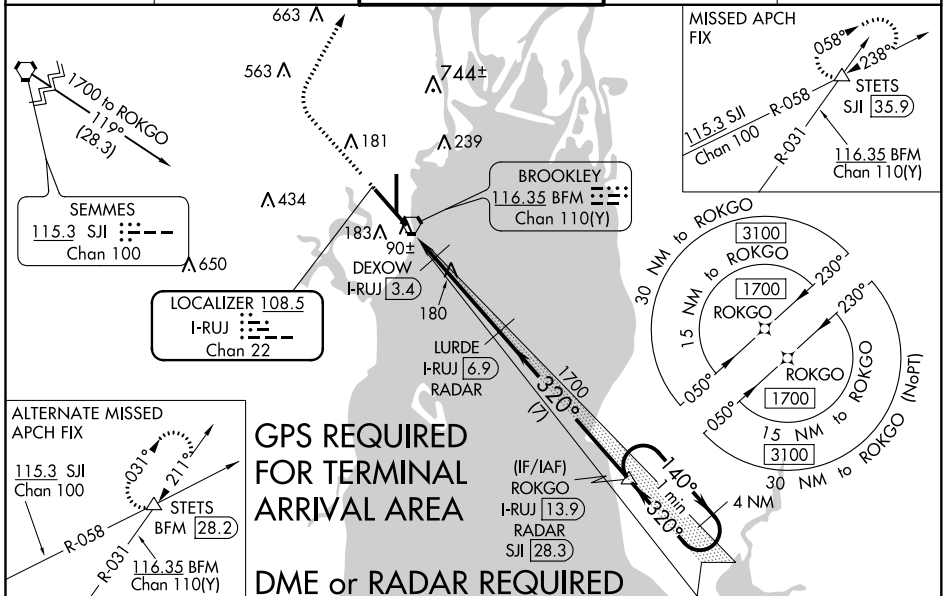
MOBILE DOWNTOWN (BFM)

⚠ DME or radar required. When local altimeter setting not received, use Mobile Rgnl altimeter setting and increase all DA 50 feet and all MDA 60 feet, increase S-LOC 32 Cat C/D visibility ½ mile and Circling Cat C visibility ¼ mile, increase DEXOW fix minimums S-LOC 32 Cats C/D visibility ¼ mile. For inop MALSR increase S-ILS 32 all Cats visibility to RVR 4000. VDP NA when using Mobile Rgnl altimeter setting.



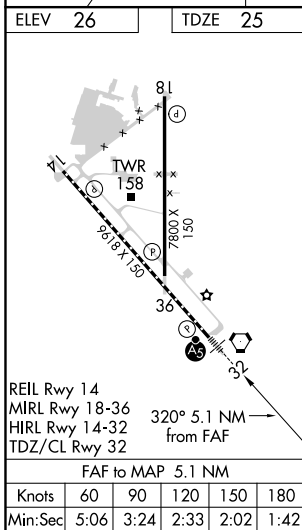
MISSED APPROACH: Climb to 800 then climbing right turn to 2000 on heading 030° and SJI R-058 to STETS INT/SJI 35.9 DME and hold.

ATIS 135.575	MOBILE APP CON ★ 118.5 269.3	DOWNTOWN TOWER ★ 118.8 (CTAF) 251.1	GND CON 121.7 239.3	UNICOM 122.95
------------------------	--	---	-------------------------------	-------------------------



GPS REQUIRED FOR TERMINAL ARRIVAL AREA

DME or RADAR REQUIRED



ELEV 26	TDZE 25	800	2000	SJI R-058	STETS	VGSI and ILS glidepath not coincident (VGSI Angle 3.00/TCH 71).	LURDE I-RUJ [6.9] RADAR	ROKGO I-RUJ [13.9] RADAR	One Minute Holding Pattern
*LOC only		I-RUJ [1.8]	I-RUJ [2.6]	DEXOW I-RUJ [3.4]	1700	320°	140°	1700	*640 when using Mobile Rgnl altimeter setting. GS 3.00° TCH 55
CATEGORY	A	B	C	D					
S-ILS 32	225/18				200 (200-½)				
S-LOC 32	580/24	555 (600-½)	580-1¼		555 (600-1¼)				
C CIRCLING	680-1	654 (700-1)	680-1¾		1100-3 1074 (1100-3)				
DEXOW FIX MINIMUMS									
S-LOC 32	340/24	315 (400-½)	340/26		315 (400-½)				
C CIRCLING	680-1	654 (700-1)	680-1¾		1100-3 1074 (1100-3)				

SE-4, 19 MAY 2022 to 16 JUN 2022

SE-4, 19 MAY 2022 to 16 JUN 2022