

WAAS CH 50411 W14A	APP CRS 140°	Rwy Idg 9618 TDZE 26 Apt Elev 26
----------------------------------------	------------------------	-------------------------------------------------------------

RNAV (GPS) RWY 14

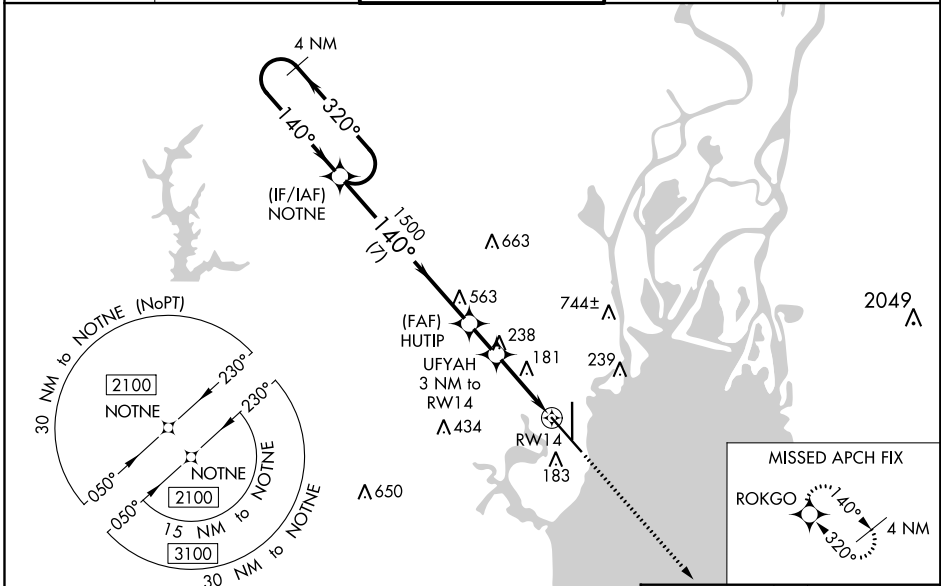
MOBILE DOWNTOWN (BFM)

RNP APCH.

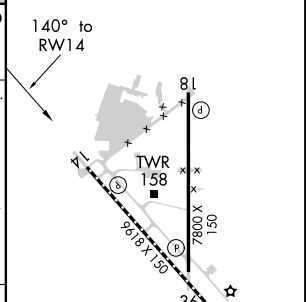
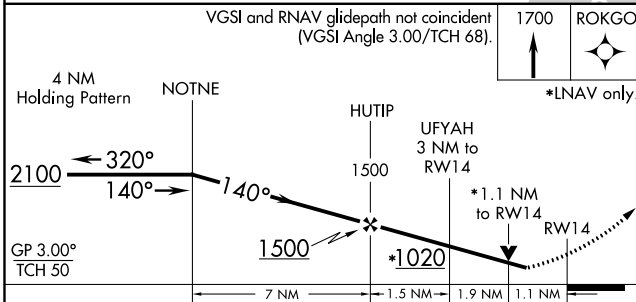
⚠ When local altimeter setting not received, use Mobile Rgnl altimeter setting and increase all DA 50 feet and all MDA 60 feet, increase LPV all Cats, LNAV/VNAV all Cats, LNAV Cats C and D, and Circling Cat C visibility 1/4 mile. For uncompensated Baro-VNAV systems, LNAV/VNAV NA below 13°C (56°F) or above 54°C (130°F). Baro-VNAV and VDP NA when using Mobile Rgnl altimeter setting. Rwy 14 helicopter visibility reduction below 3/4 SM NA.

MISSED APPROACH:
Climb to 1700 direct ROKGO and hold.

ATIS 135.575	MOBILE APP CON * 118.5 269.3	DOWNTOWN TOWER * 118.8 (CTAF) 0 251.1	GND CON 121.7 239.3	UNICOM 122.95
------------------------	----------------------------------------	-------------------------------------------------	-------------------------------	-------------------------



ELEV 26	TDZE 26
---------	---------



CATEGORY	A	B	C	D
LPV DA		311-7/8	285 (300-7/8)	
LNAV/VNAV DA		334-1	308 (400-1)	
LNAV MDA	440-1	414 (500-1)	440-1 1/8	414 (500-1 1/8)
C CIRCLING	680-1	654 (700-1)	680-1 3/4 654 (700-1 3/4)	1100-3 1074 (1100-3)

REIL Rwy 14
MIRL Rwy 18-36
HIRL Rwy 14-32
TDZ/CL Rwy 32

SE-4, 19 MAY 2022 to 16 JUN 2022

SE-4, 19 MAY 2022 to 16 JUN 2022