


WAAS CH 70304 W32A	APP CRS 320°	Rwy ldg TDZE Apt Elev	9618 25 26
--	------------------------	-----------------------------	---------------------------------------

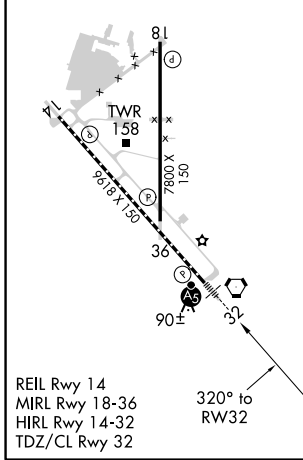
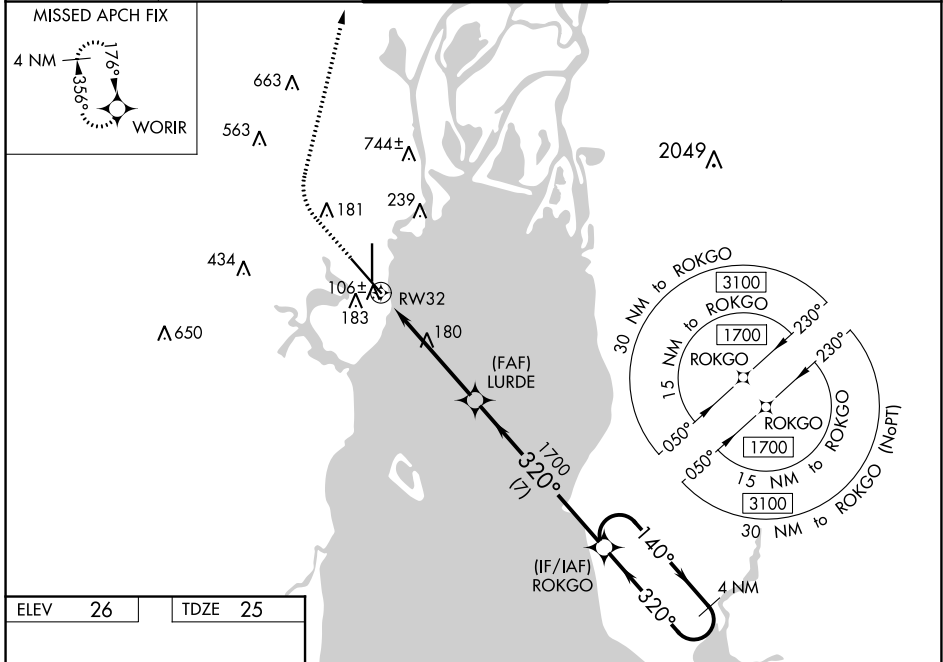
RNAV (GPS) RWY 32


MOBILE DOWNTOWN (BFM)

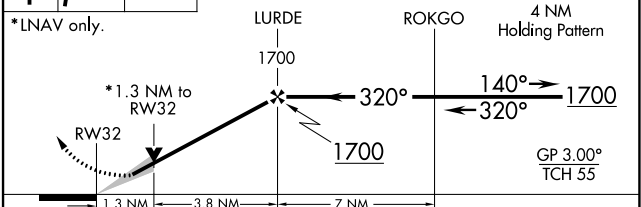
⚠ DME/DME RNP-0.3 NA. When local altimeter setting not received, use Mobile Rgnl altimeter setting and increase all DA 50 feet and MDA 60 feet and increase LNAV Cat C/D visibility to RVR 5500, and increase Circling Cat C visibility 1/4 mile. For uncompensated Baro-VNAV systems, LNAV/VNAV NA below 13°C (56°F) or above 54°C (130°F). Baro-VNAV and VDP NA when using Mobile Rgnl altimeter setting.

MALS  **MISSED APPROACH:** Climb to 800 then climbing right turn to 2000 direct WORIR and hold.

ATIS 135.575	MOBILE APP CON ★ 118.5 269.3	DOWNTOWN TOWER ★ 118.8 (CTAF) 251.1	GND CON 121.7 239.3	UNICOM 122.95
------------------------	--	--	-------------------------------	-------------------------



800 2000 WORIR  VGSI and RNAV glidepath not coincident (VGSI Angle 3.00/TCH 71).



CATEGORY	A	B	C	D
LPV DA	225/18		200 (200-1/2)	
LNAV/VNAV DA	283/24		258 (300-1/2)	
LNAV MDA	480/24	455 (500-1/2)	480/50	455 (500-1)
C CIRCLING	680-1	654 (700-1)	680-1 3/4 654 (700-1 3/4)	1100-3 1074 (1100-3)

SE-4, 19 MAY 2022 to 16 JUN 2022

SE-4, 19 MAY 2022 to 16 JUN 2022