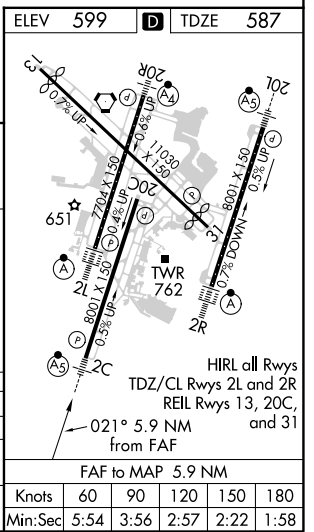
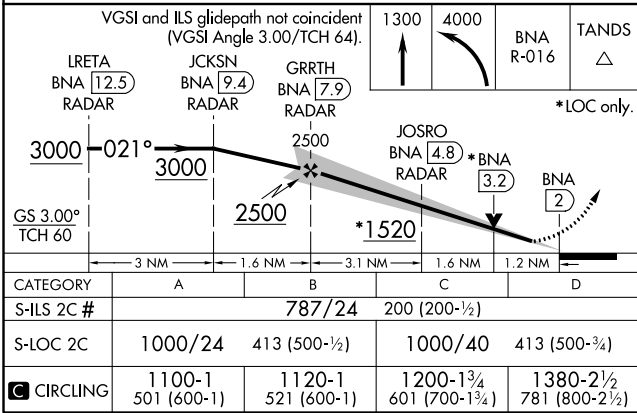
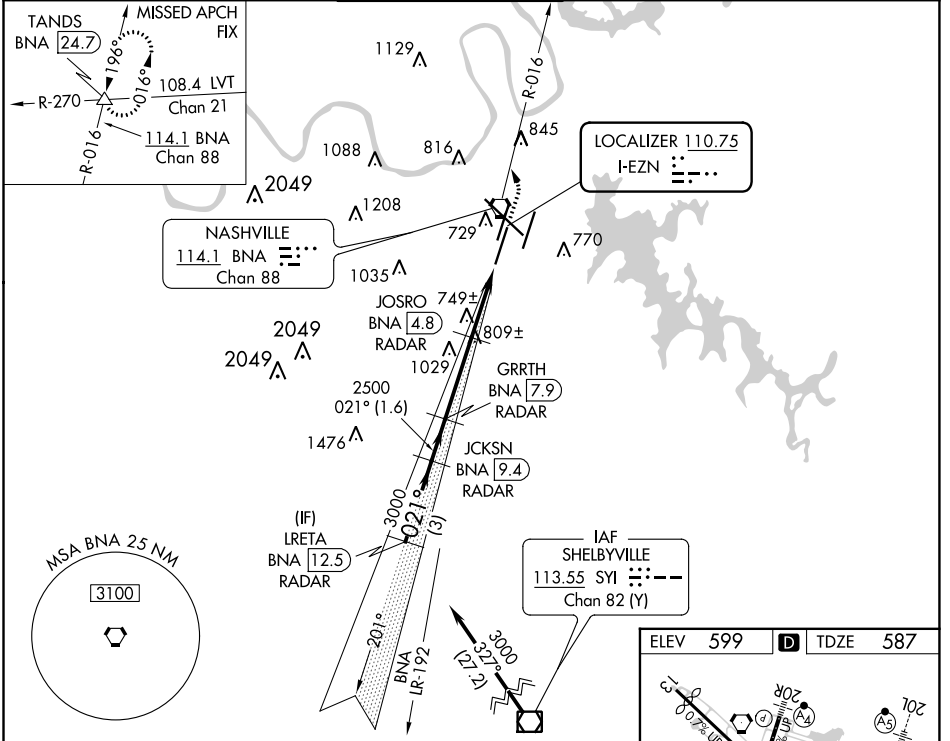


ILS or LOC RWY 2C

NASHVILLE INTL (BNA)

LOC I-EZN 110.75	APP CRS 021°	Rwy Idg 7601
		TDZE 587
		Apt Elev 599

DME or RADAR required.		MALSR 		MISSED APPROACH: Climb to 1300 then climbing left turn to 4000 on BNA VORTAC R-016 to TANDS INT/BNA 24.7 and hold.			
▼ Simultaneous approach authorized. For inop ALS, increase S-LOC 2C Cats C and D visibility to RVR 6000. DME from BNA VORTAC. ▲ Simultaneous reception of I-EZN and BNA DME required. # RVR 1800 authorized with the use of FD or AP or HUD to DA.		D-ATIS 135.1	NASHVILLE APP CON 118.4 360.7	NASHVILLE TOWER 118.6 257.8	GND CON 121.9 348.6	CLNC DEL 126.05	CPDLC



SE-1, 19 MAY 2022 to 16 JUN 2022

SE-1, 19 MAY 2022 to 16 JUN 2022

Knots	60	90	120	150	180
Min:Sec	5:54	3:56	2:57	2:22	1:58