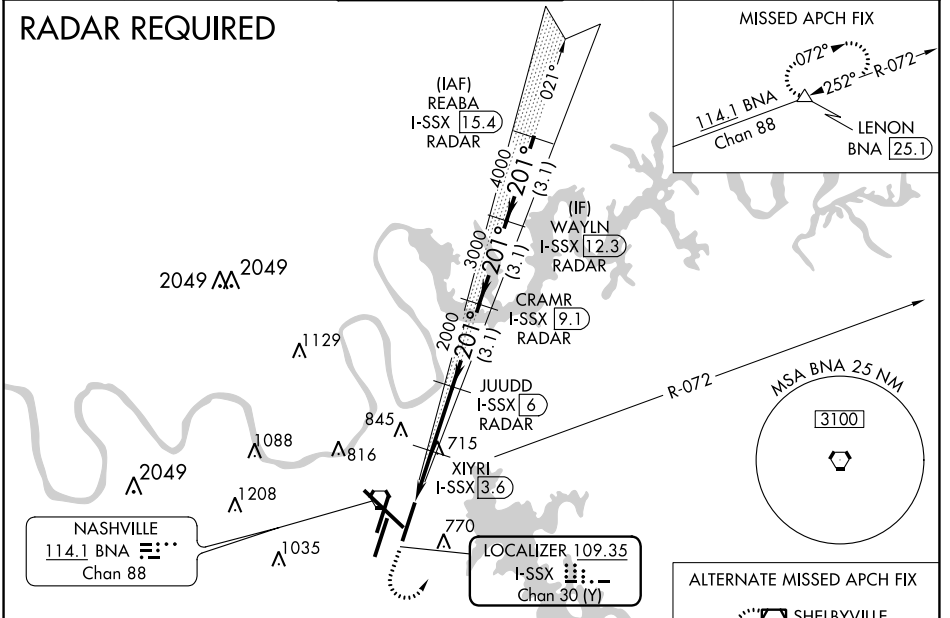


LOC/DME I-SSX 109.35 Chan 30 (Y)	APP CRS 201°	Rwy Idg TDZE Apt Elev 8000 551 599
---	------------------------	--

ILS or LOC/DME RWY 20L

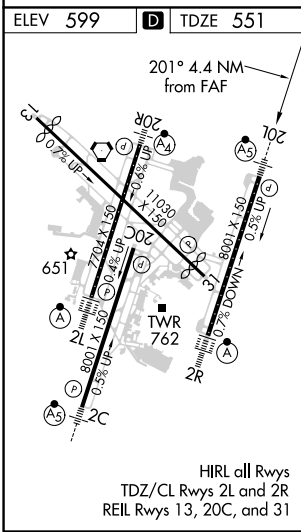
NASHVILLE INTL (BNA)

▽ Simultaneous approach authorized with Rwy 20R. ▲ DME required. **RVR 1800 authorized with the use of FD or AP or HUD to DA.	MALSR 		MISSED APPROACH: Climb to 1300 then climbing left turn to 3000 on heading 040° and BNA VORTAC R-072 to LENON/BNA 25.1 DME and hold.		
	D-ATIS 135.1	NASHVILLE APP CON 118.4 360.7	NASHVILLE TOWER 118.6 257.8	GND CON 121.9 348.6	CLNC DEL 126.05



SE-1, 19 MAY 2022 to 16 JUN 2022

SE-1, 19 MAY 2022 to 16 JUN 2022



1300	3000	BNA R-072	LENON	REABA I-SSX [15.4] RADAR
*LOC only.		XIYRI I-SSX [3.6]	JUDD I-SSX [6] RADAR	CRAMR I-SSX [9.1] RADAR
I-SSX [1.6]	I-SSX [2.8]	2000	2000	WAYLN I-SSX [12.3] RADAR
1220*		3000	4000	5000
GS 3.00° TCH 47				
CATEGORY	A	B	C	D
S-ILS 20L	** 751/24 200 (200-½)			
S-LOC 20L	980/24	429 (400-½)	980/40	429 (400-¾)
C CIRCLING	1100-1 501 (600-1)	1120-1 521 (600-1)	1200-1¾ 601 (700-1¾)	1380-2½ 781 (800-2½)