

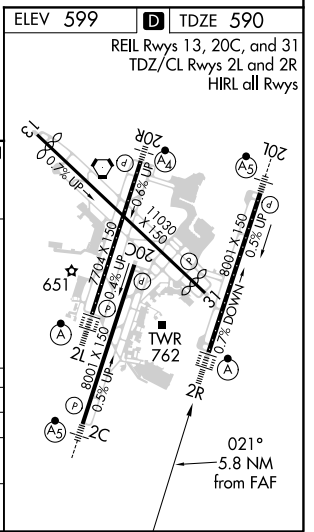
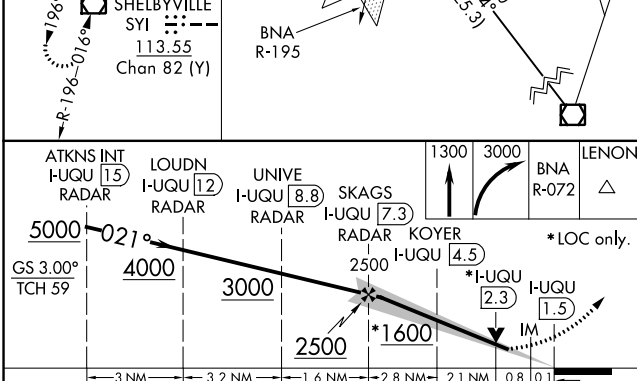
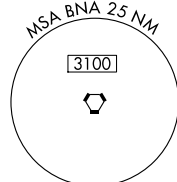
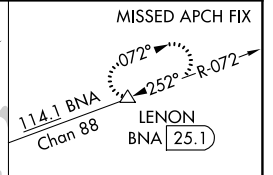
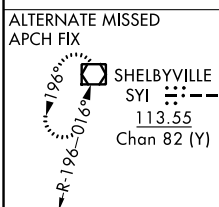
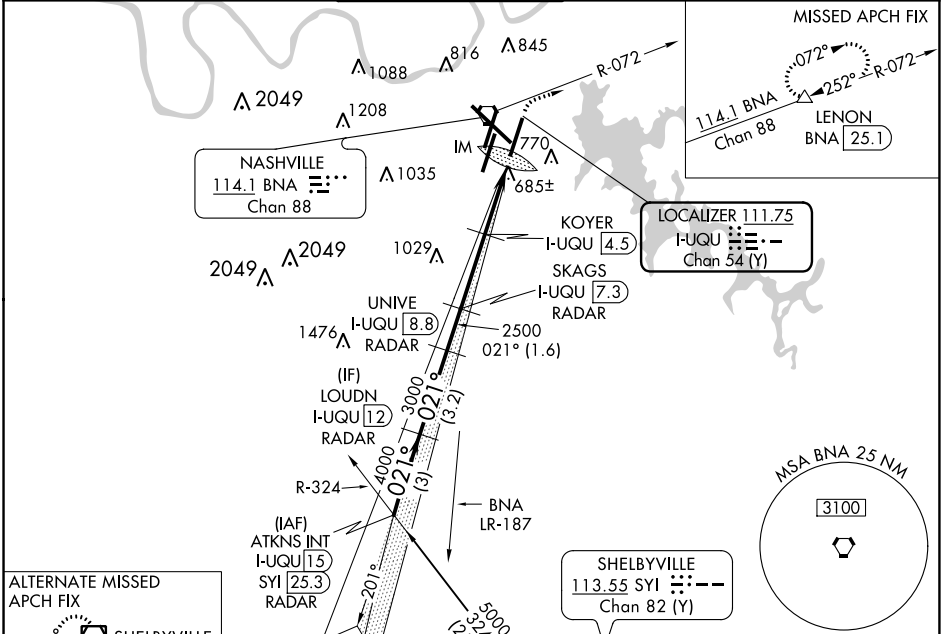
LOC/DME I-UQU 111.75 Chan 54 (Y)	APP CRS 021°	Rwy Idg TDZE Apt Elev 8000 590 599
--	------------------------	--

ILS or LOC/DME RWY 2R

NASHVILLE INTL (BNA)

DME required.	ALSF-2	MISSED APPROACH: Climb to 1300 then climbing right turn to 3000 on BNA R-072 to LENON/BNA 25.1 DME and hold.
<p>Simultaneous approach authorized with Rwy 2L/C.</p> <p>For inop ALSF, increase S-LOC 2R Cats C/D visibility to RVR 5500.</p>		

D-ATIS 135.1	NASHVILLE APP CON 118.4 360.7	NASHVILLE TOWER 118.6 257.8	GND CON 121.9 348.6	CLNC DEL 126.05	CPDLC
------------------------	---	---------------------------------------	-------------------------------	---------------------------	-------



CATEGORY	A	B	C	D
S-ILS 2R	790/18 200 (200-½)			
S-LOC 2R	940/24	350 (400-½)	940/30	350 (400-¾)
CIRCLING	1100-1 501 (600-1)	1120-1 521 (600-1)	1200-1¾ 601 (700-1¾)	1380-2½ 781 (800-2½)

SE-1, 19 MAY 2022 to 16 JUN 2022

SE-1, 19 MAY 2022 to 16 JUN 2022