

APP CRS	Rwy Idg	8000
201°	TDZE	551
	Apt Elev	599

RNAV (RNP) Z RWY 20L

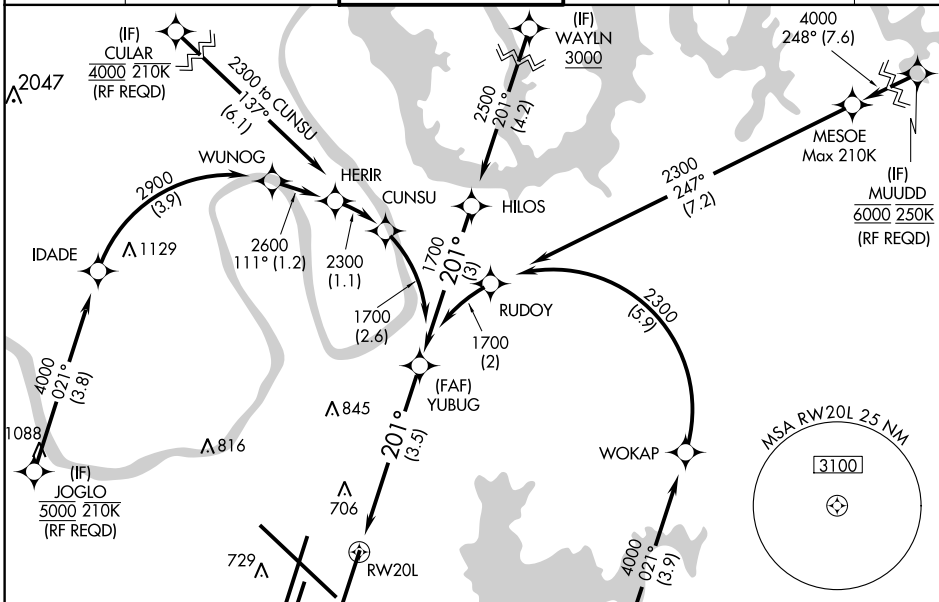
NASHVILLE INTL (BNA)

GPS required. Simultaneous approach authorized with Rwy 20R. Use of FD or AP providing RNAV track guidance required during simultaneous operations. For uncompensated Baro-VNAV systems, procedure NA below -11°C (13°F) or above 54°C (130°F). Inop table does not apply to RNP 0.20. For inop MALSR, increase RNP 0.30 all Cats visibility to 1½.

MALSR

MISSED APPROACH: Climb to 1300 then climbing left turn to 4000 direct CENOP and hold.

D-ATIS 135.1	NASHVILLE APP CON 118.4 360.7	NASHVILLE TOWER 118.6 257.8	GND CON 121.9 348.6	CLNC DEL 126.05	CPDLC
------------------------	---	---------------------------------------	-------------------------------	---------------------------	-------



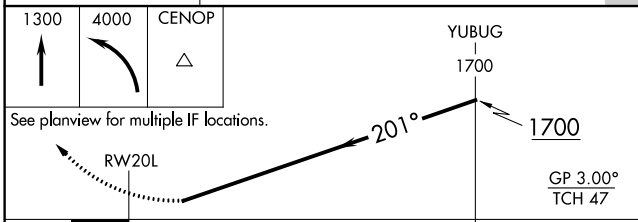
SE-1, 19 MAY 2022 to 16 JUN 2022

SE-1, 19 MAY 2022 to 16 JUN 2022

RADAR REQUIRED

MISSED APCH FIX
 CENOP 133° 4 NM

YUBUG 1700
 GP 3.00°
 TCH 47



HIRL all Rwys
 TDZ/CL Rwys 2L and 2R
 REIL Rwys 13, 20C, and 31

CATEGORY	A	B	C	D
RNP 0.20 DA		810/40	259 (200-¾)	
RNP 0.30 DA		1008/55	457 (400-1)	

AUTHORIZATION REQUIRED