

# RNAV (RNP) Z RWY 2R

NASHVILLE INTL (BNA)

APP CRS	Rwy Idg	<b>8000</b>
<b>021°</b>	TDZE	<b>590</b>
	Apt Elev	<b>599</b>

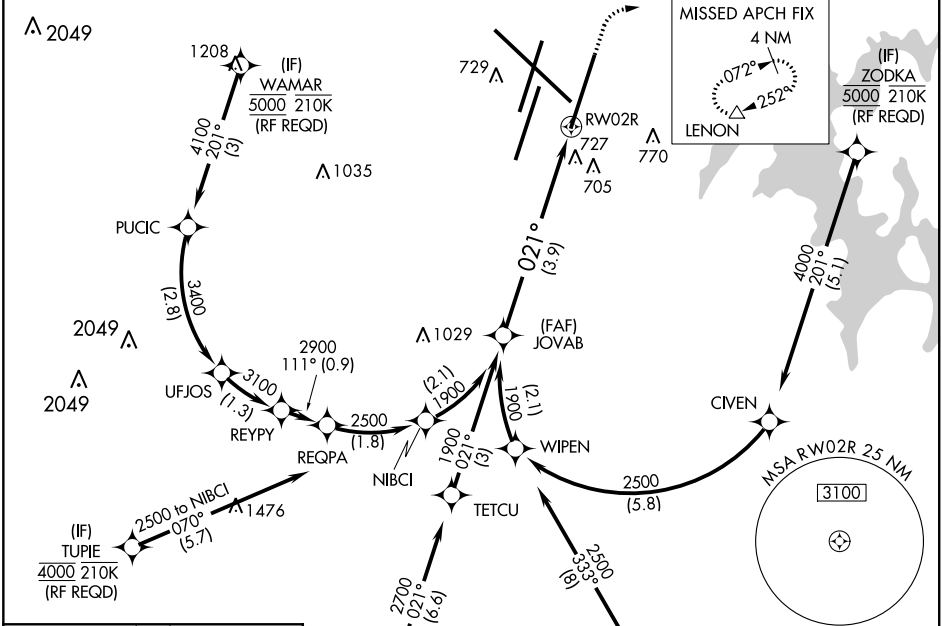
**RNP AR APCH.**

▼ For uncompensated Baro-VNAV systems, procedure NA below -11°C or above 54°C.  
 For inoperative ALSF-2, increase RNP 0.15 all Cats visibility to RVR 5600, RNP 0.30 all Cats visibility to 1 3/8 mile. Simultaneous approach authorized with Rwy 2L/C. Use of FD or AP providing RNAV track guidance required during simultaneous operations.

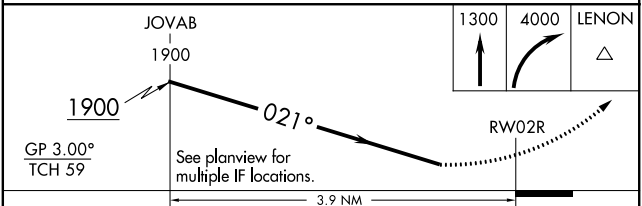
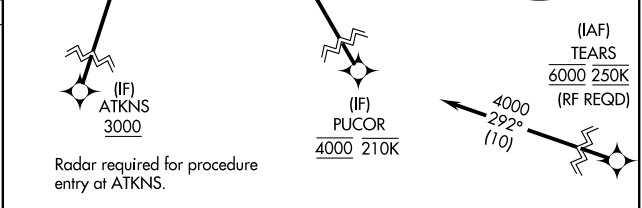
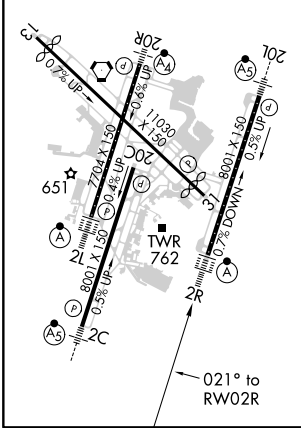
**ALSF-2**

MISSED APPROACH:  
 Climb to 1300 then climbing right turn to 4000 direct LENON and hold.

D-ATIS <b>135.1</b>	NASHVILLE APP CON <b>118.4 360.7</b>	NASHVILLE TOWER <b>118.6 257.8</b>	GND CON <b>121.9 348.6</b>	CLNC DEL <b>126.05</b>	CPDLC
------------------------	---	---------------------------------------	-------------------------------	---------------------------	-------



ELEV 599	<b>D</b>	TDZE 590
HIRL all Rwys		
TDZ/CL Rwys 2L and 2R		
REIL Rwys 13, 20C, and 31		



CATEGORY	A	B	C	D
RNP 0.15 DA		938/40	348 (400-3/4)	
RNP 0.30 DA		1024/48	434 (500-1)	

**AUTHORIZATION REQUIRED**

SE-1, 19 MAY 2022 to 16 JUN 2022

SE-1, 19 MAY 2022 to 16 JUN 2022