

WAAS CH <b>49013</b> <b>W20D</b>	APP CRS <b>201°</b>	Rwy Idg <b>8000</b> TDZE <b>551</b> Apt Elev <b>599</b>
--	------------------------	---

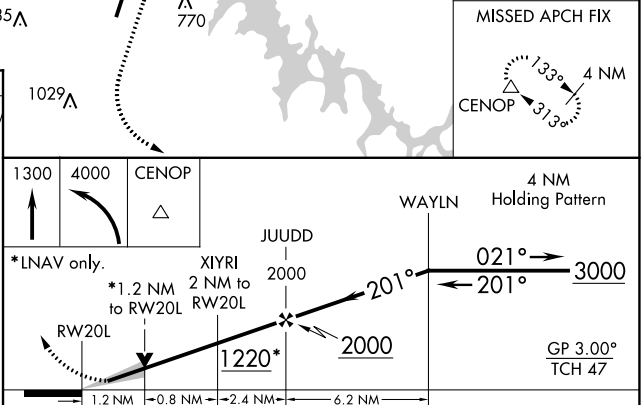
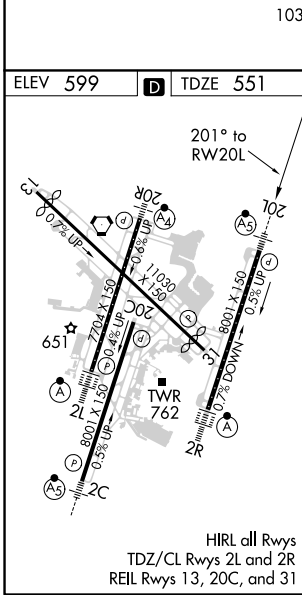
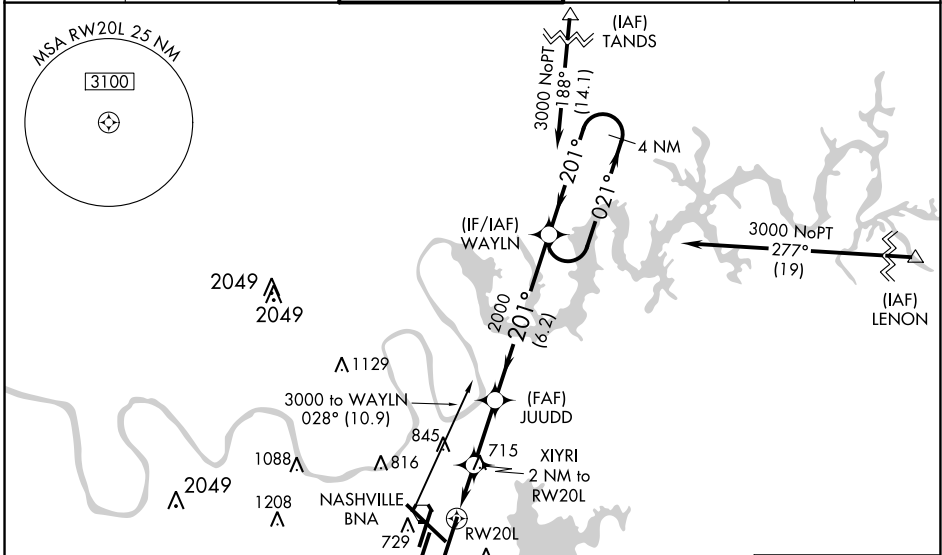
# RNAV (GPS) Y RWY 20L

NASHVILLE INTL (BNA)

**⚠** For uncompensated Baro-VNAV systems, procedure NA below -11°C (13°F) or above 54°C (130°F), DME/DME RNP-0.3 NA. Simultaneous approach authorized with Rwy 20R. LNAV procedure NA during simultaneous operations. Use of FD or AP providing RNAV track guidance required during simultaneous operations. For inop MALS, increase LNAV/VNAV all Cats visibility to 1%. \*\* RVR 1800 authorized with use of FD or AP or HUD to DA.

**MALS**  
**MISSED APPROACH:**  
Climb to 1300 then climbing left turn to 4000 direct CENOP and hold.

D-ATIS <b>135.1</b>	NASHVILLE APP CON <b>118.4 360.7</b>	NASHVILLE TOWER <b>118.6 257.8</b>	GND CON <b>121.9 348.6</b>	CLNC DEL <b>126.05</b>	CPDLC
------------------------	---	---------------------------------------	-------------------------------	---------------------------	-------



ELEV 599	<b>D</b>	TDZE 551		
1300	4000	CENOP		
*LNAV only.				
*1.2 NM to RWY20L				
1.2 NM	0.8 NM	2.4 NM		
6.2 NM				
CATEGORY	A	B	C	D
LPV DA	** 751/24 200 (200-½)			
LNAV/ VNAV DA	1025/58 474 (500-1¼)			
LNAV MDA	980/24	429 (400-½)	980/40	429 (400-¾)
<b>C</b> CIRCLING	1100-1 501 (600-1)	1120-1 521 (600-1)	1200-1¾ 601 (700-1¾)	1380-2½ 781 (800-2½)

SE-1, 19 MAY 2022 to 16 JUN 2022

SE-1, 19 MAY 2022 to 16 JUN 2022